

**Composite Floodplain  
Maximum Depth [feet]**

	<1.0
	1.1 - 2.0
	2.1 - 3.0
	3.1 - 4.0
	4.1 - 5.0
	5.1 - 10.0
	>10.0

	Limits of Floodplain Modeling
	Sphere of Influence
	Stream Centerline
	Levee Breach Location
	RD 17 Levee
	Other Levee/Embankment

**PETERSON . BRUSTAD . INC**  
ENGINEERING . CONSULTING

1180 Iron Point Rd., Suite 260  
Folsom, CA 95630

Phone: (916) 608-2212  
Fax: (916) 608-2232

0 1.5  
Miles

1 inch = 1.5 miles

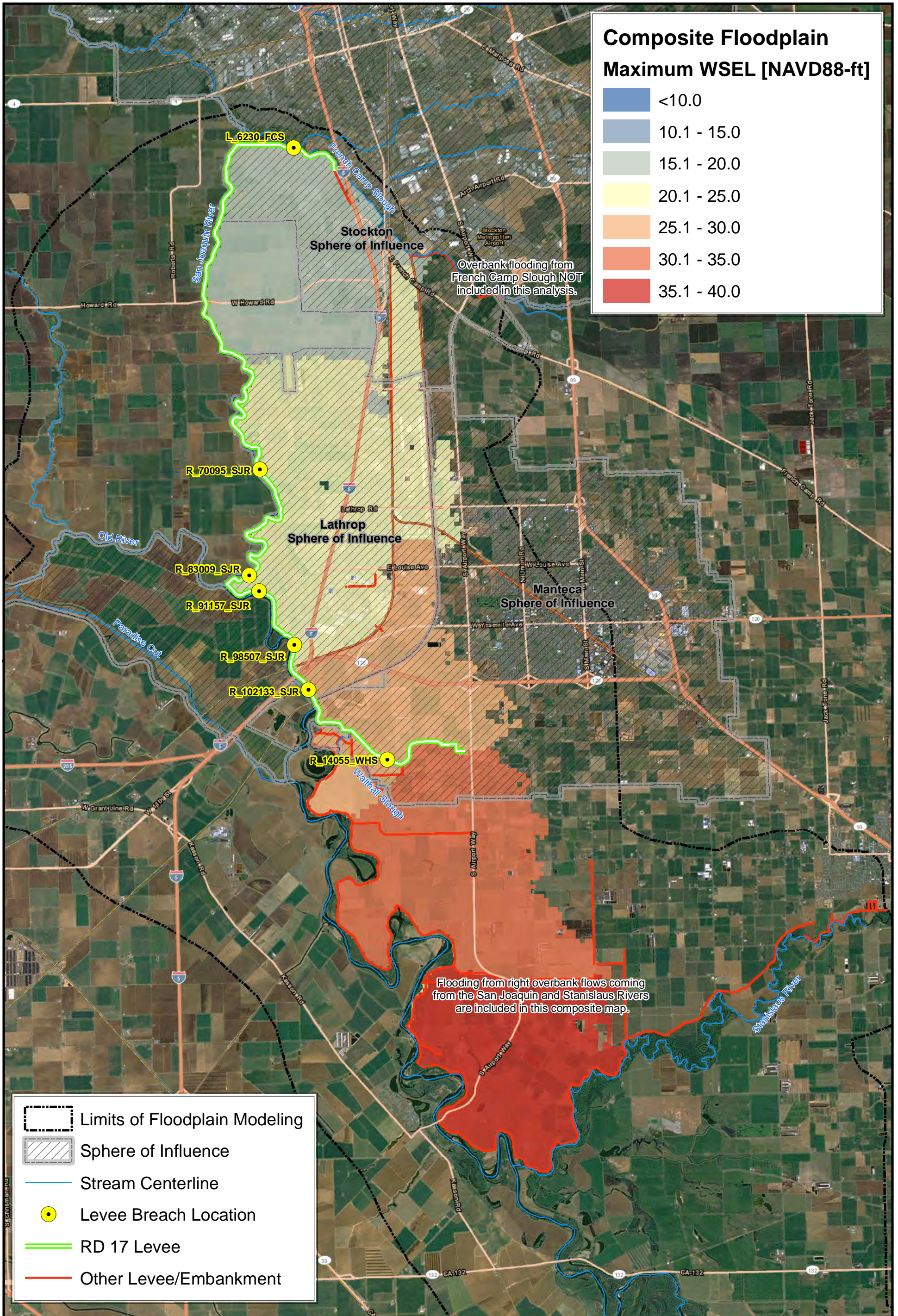
APRIL 11, 2014

CITIES OF LATHROP & MANTECA - 200-YEAR PLAN

**200-YEAR COMPOSITE FLOODPLAIN  
MAXIMUM FLOOD DEPTHS**

FIGURE  
**1**

**DRAFT**



**Composite Floodplain**  
**Maximum WSEL [NAVD88-ft]**

	<10.0
	10.1 - 15.0
	15.1 - 20.0
	20.1 - 25.0
	25.1 - 30.0
	30.1 - 35.0
	35.1 - 40.0

	Limits of Floodplain Modeling
	Sphere of Influence
	Stream Centerline
	Levee Breach Location
	RD 17 Levee
	Other Levee/Embankment

**PETERSON . BRUSTAD . INC**  
ENGINEERING . CONSULTING

1180 Iron Point Rd., Suite 260  
Folsom, CA 95630

Phone: (916) 608-2212  
Fax: (916) 608-2232

0 1.5 Miles  
1 inch = 1.5 miles  
APRIL 11, 2014

CITIES OF LATHROP & MANTECA - 200-YEAR PLAN  
**200-YEAR COMPOSITE FLOODPLAIN  
MAXIMUM WATER SURFACE ELEVATIONS**

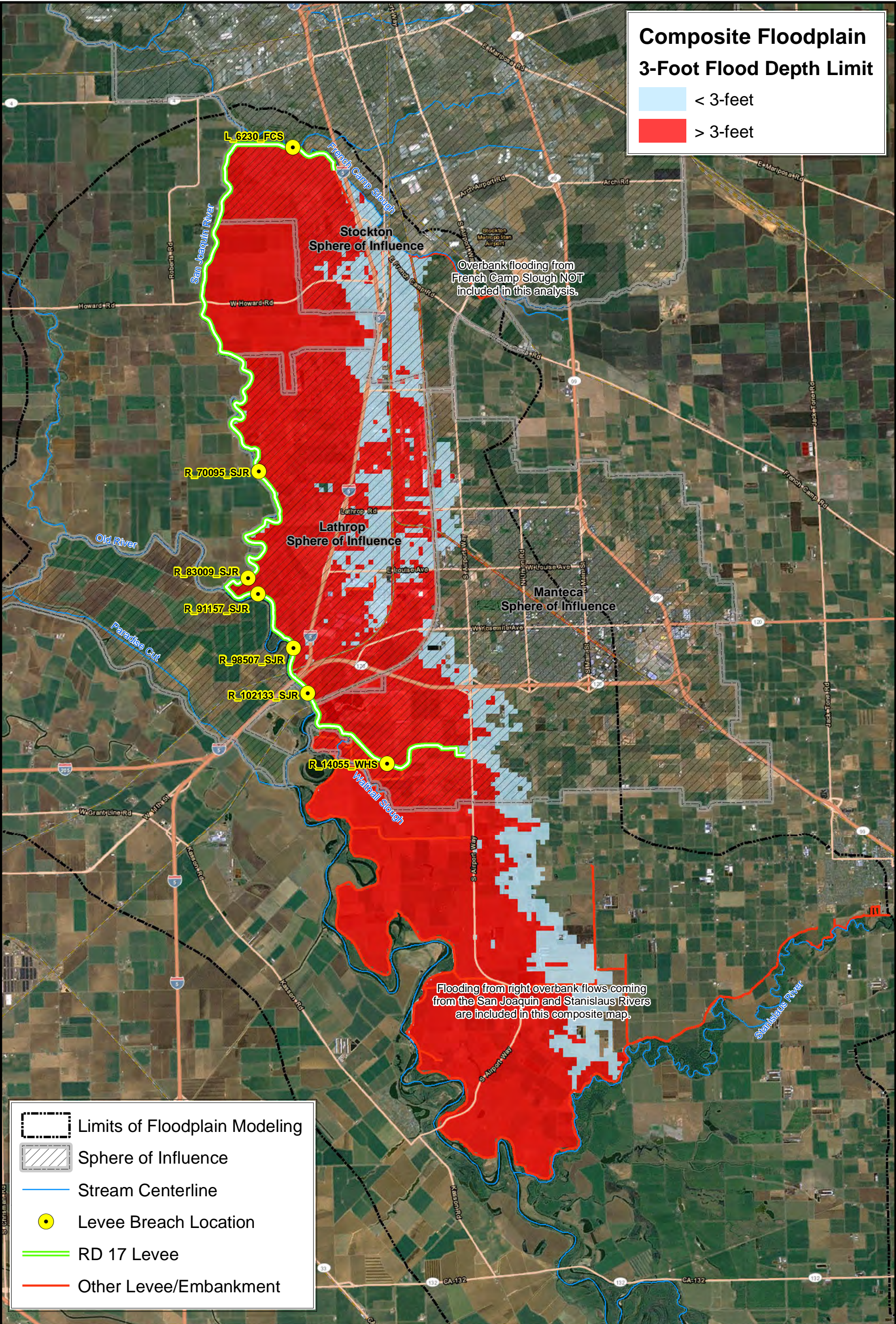
FIGURE  
**2**

**DRAFT**

### Composite Floodplain 3-Foot Flood Depth Limit

< 3-feet

> 3-feet



- Limits of Floodplain Modeling
- Sphere of Influence
- Stream Centerline
- Levee Breach Location
- RD 17 Levee
- Other Levee/Embankment

**PETERSON . BRUSTAD . INC**  
ENGINEERING . CONSULTING

1180 Iron Point Rd., Suite 260  
Folsom, CA 95630

Phone: (916) 608-2212  
Fax: (916) 608-2232

N

0  1.5  
Miles

1 inch = 1.5 miles

APRIL 11, 2014

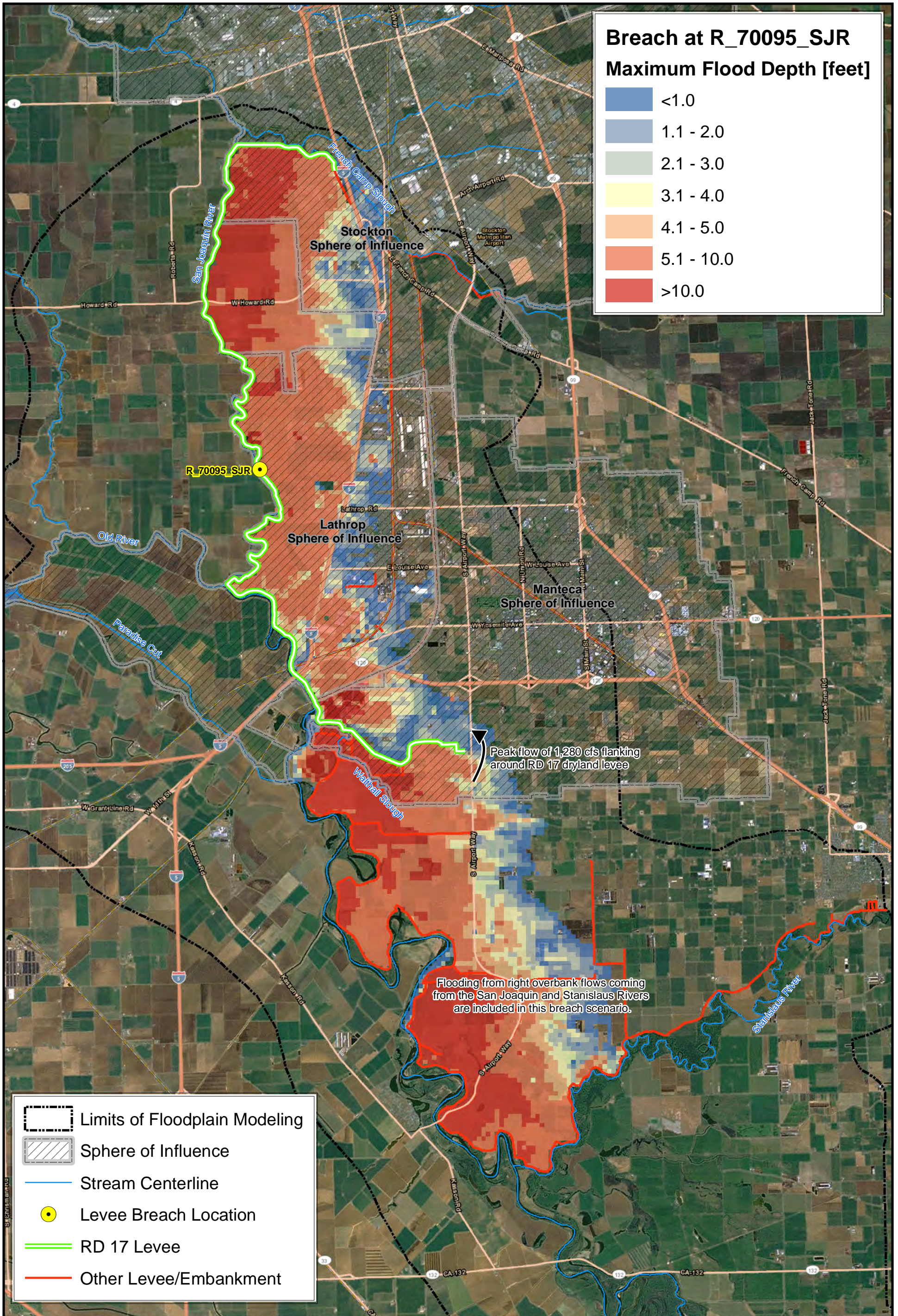
CITIES OF LATHROP & MANTECA - 200-YEAR PLAN

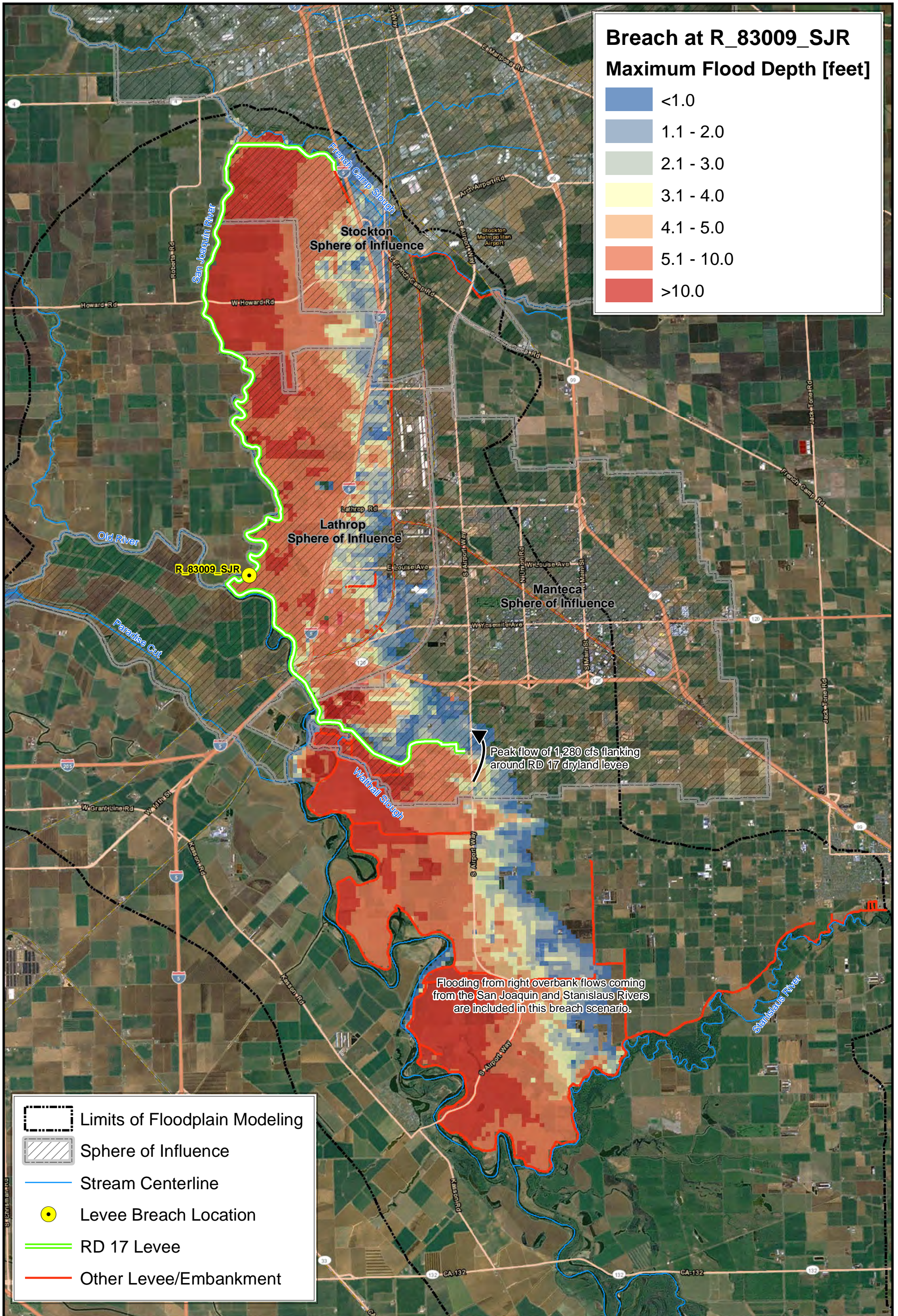
**200-YEAR COMPOSITE FLOODPLAIN  
AREAS WITH 3-FOOT FLOOD DEPTHS**

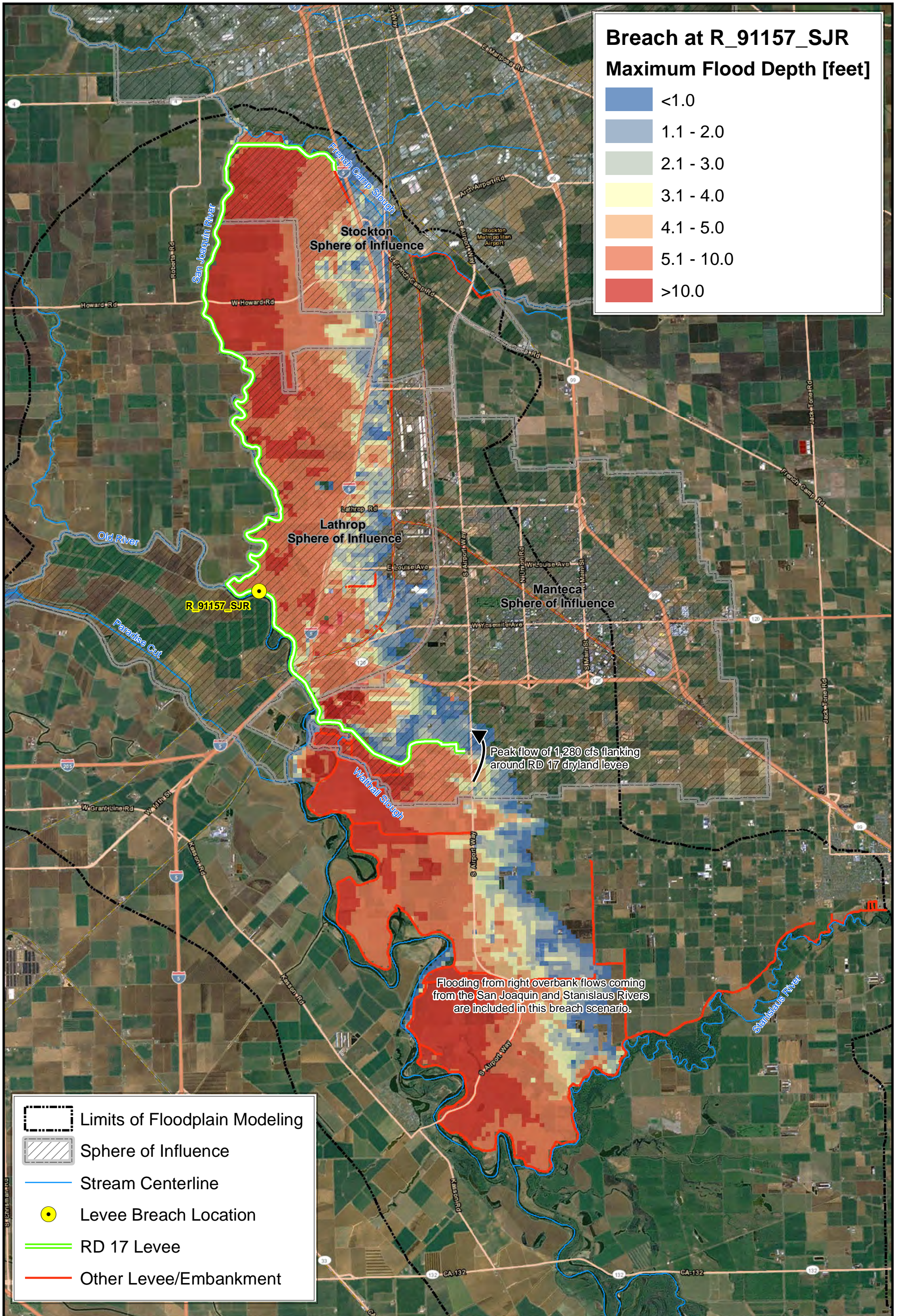
FIGURE  
**3**

DRAFT

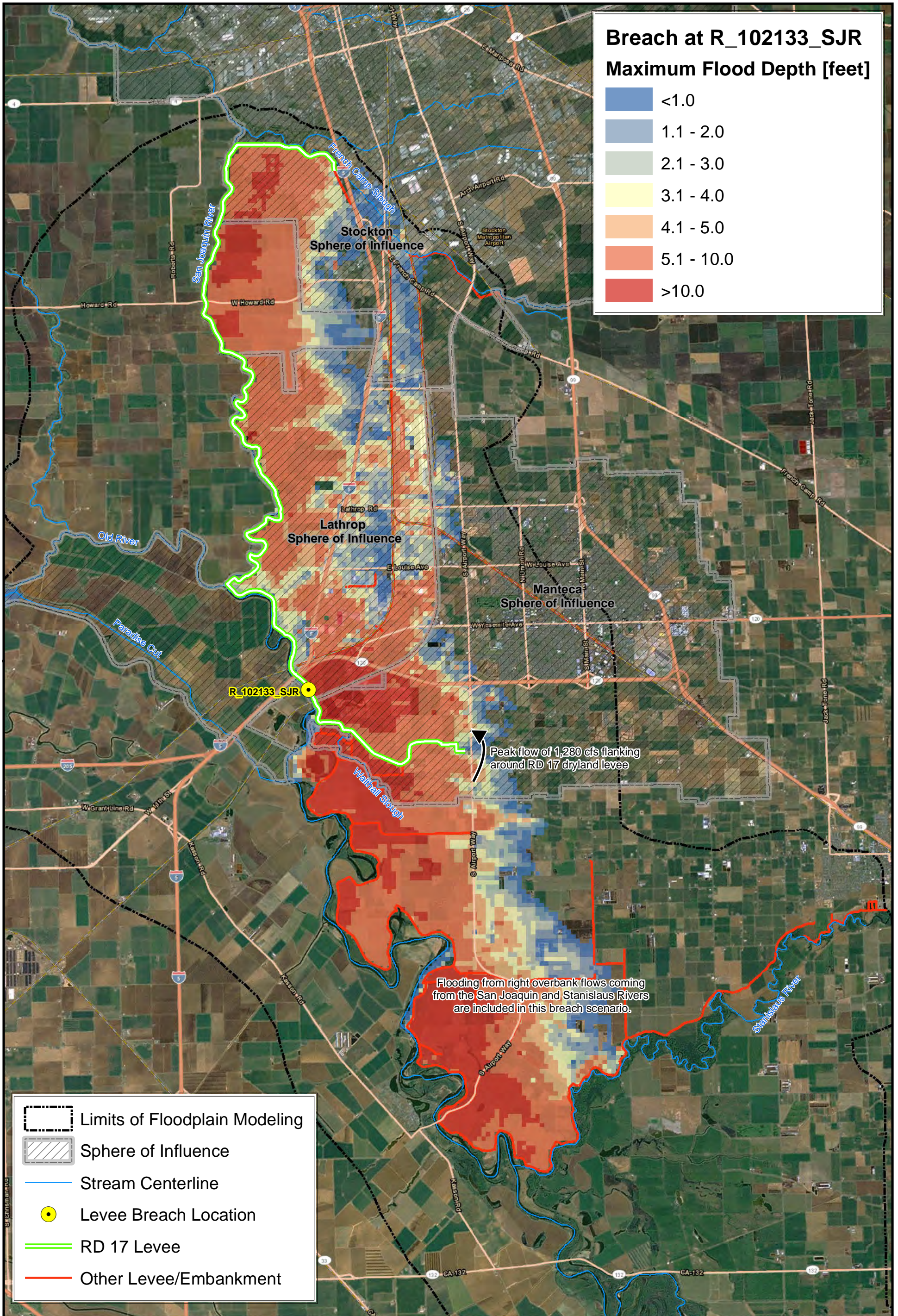


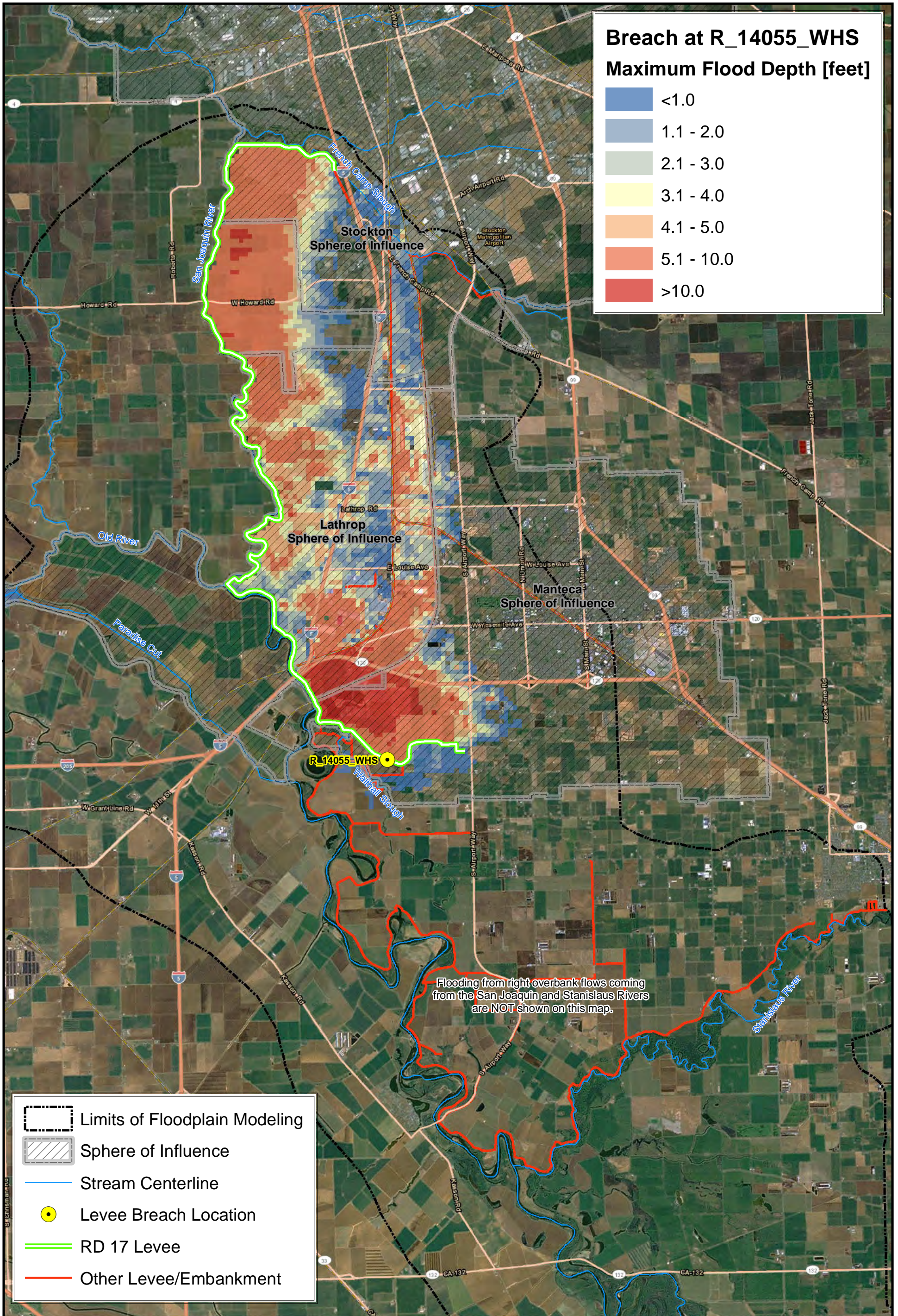






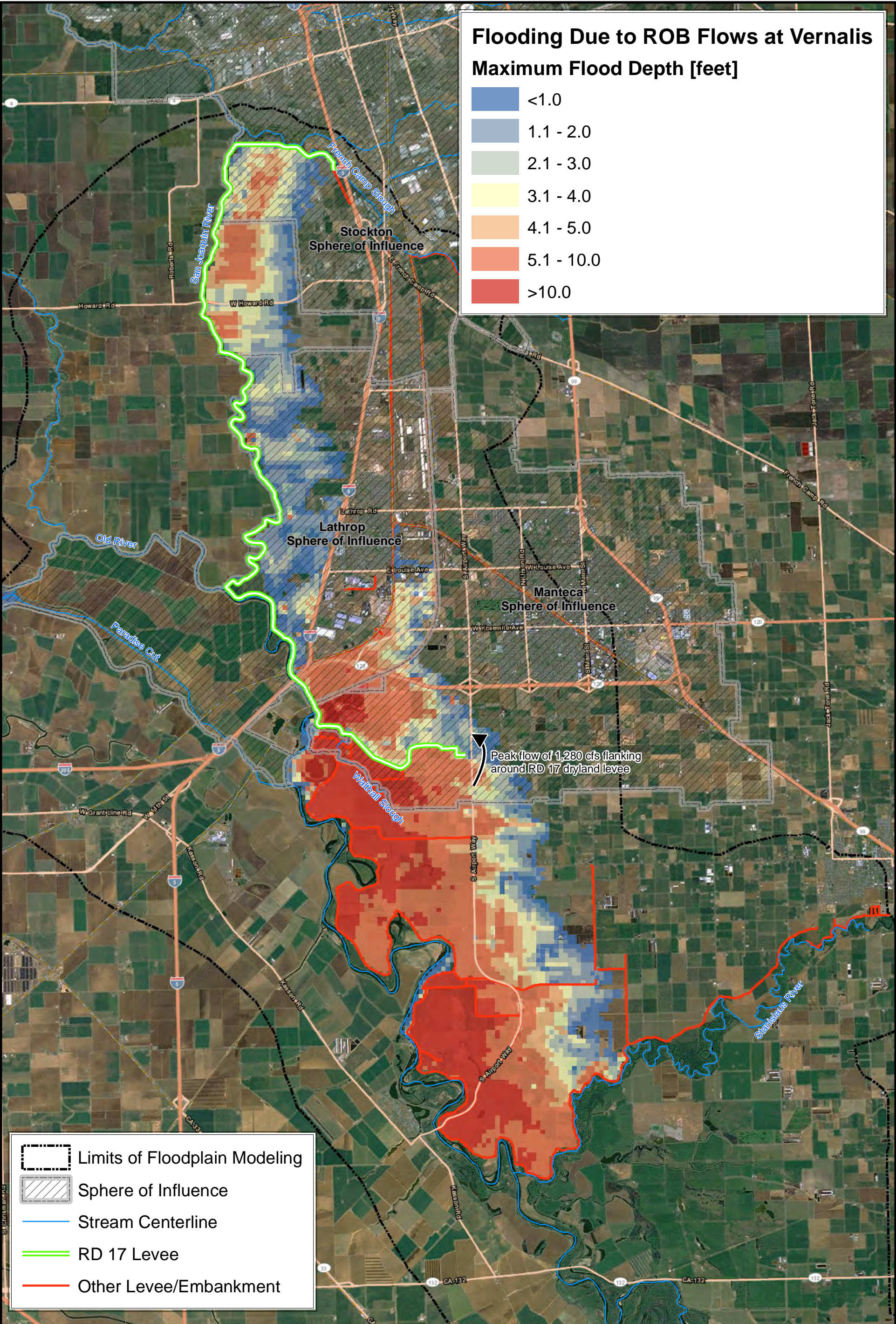
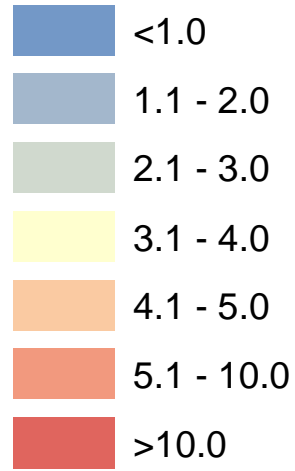






# Flooding Due to ROB Flows at Vernalis

## Maximum Flood Depth [feet]



Peak flow of 1,280 cfs flanking around RD 17 dryland levee

