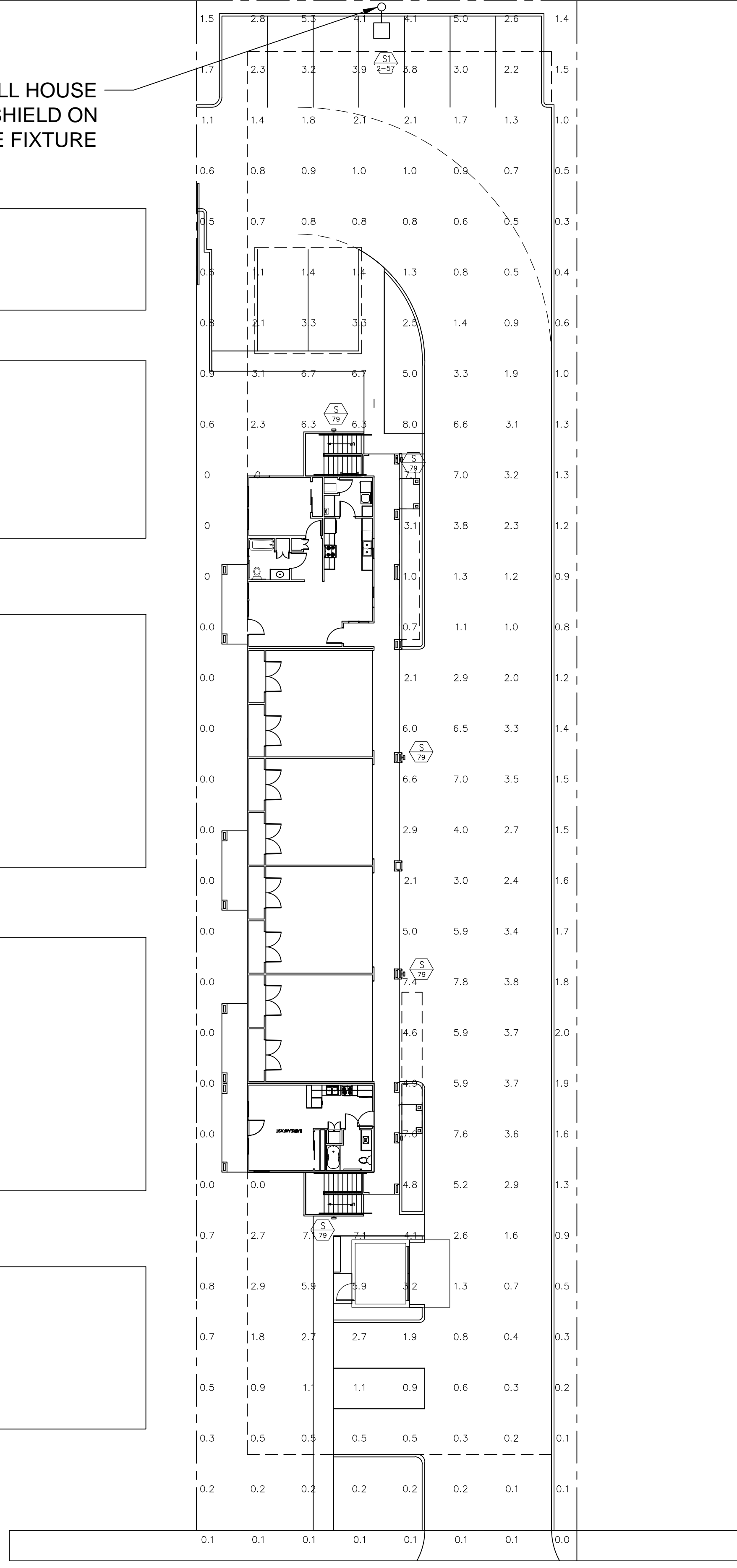
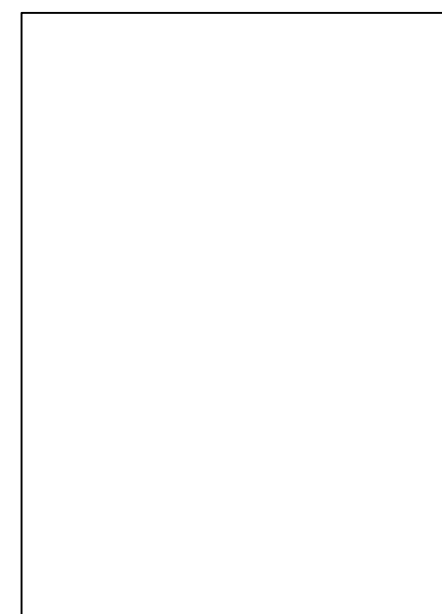
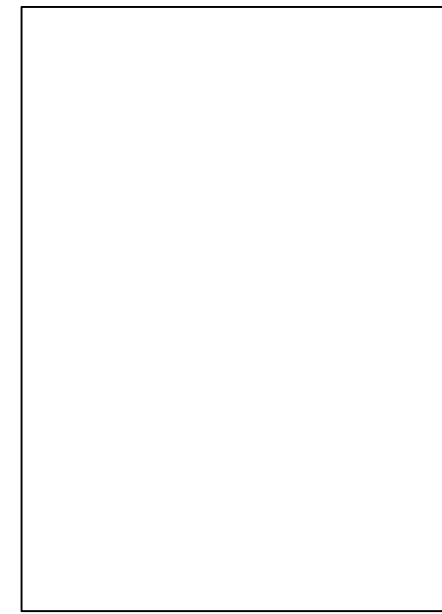
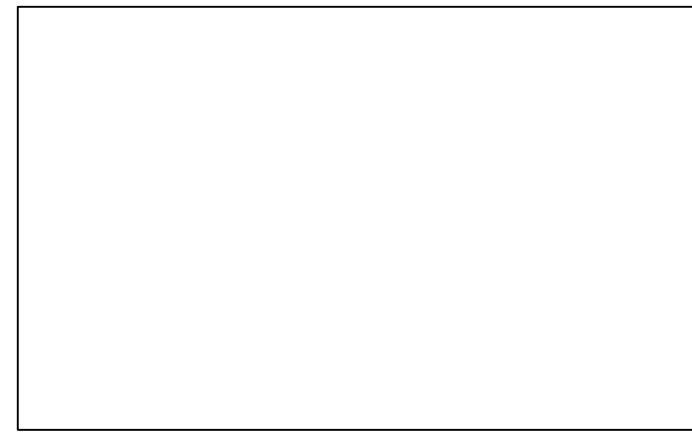
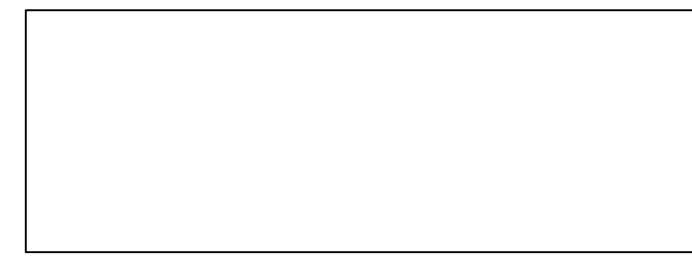


INSTALL HOUSE  
SIDE SHIELD ON  
SITE POLE FIXTURE



LUMINAIRE SCHEDULE

CALLOUT	SYMBOL	LAMP	DESCRIPTION	MOUNTING	MODEL	NOTE 1	NOTE 2
S	⬢	(1) 79W 4000K LED	LUMARK CROSSTOUR 85W LED WALL PACK WITH CARBON BRONZE HOUSING	WALL	COOPER LIGHTING, XTOR9A	WALL MOUNTED @ 18' AFF	
S1	⬢	(2) 87W 4000K LED	SITE POLE WITH 87W LED HEAD / INSTALL HOUSE SIDE SHIELD	POLE	LUMARK PRV-A25-D-UNV-T3-BZ-7040 HSS	MOUNTING HEIGHTS @ 14' ON POLE BASE	INSTALL HOUSE SIDE SHIELD

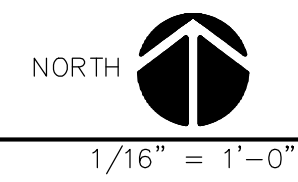
TYPE S



TYPE S1



SITE LIGHTING PLAN



*Electrical Design Solutions*  
INCORPORATED  
David L. Jackson, President  
8829 Davis Road, Suite 3  
Stockton, CA 95209  
(209) 473-2668 Fax 473-2671

E1

San Joaquin Design Group  
Architecture & Planning  
7877 N. Pershing Ave. - Stockton, Ca. 95207  
Tel: (209) 478-4013 Fax: (209) 478-0266

The information, plans, designs and arrangements shown on these drawings are prepared in whole or in part without express written permission of James M. Tibbens - Architect  
Bill Johnston - Architect

649 APARTMENTS  
649 STEWART STREET  
MANTECA, CALIFORNIA

SITE LIGHTING  
FOOT CANDLE  
PLAN

SUBMITTAL DATE 10/24/17

PRODUCED BY AN AUTODESK EDUCATIONAL PRODUCT

PRODUCED BY AN AUTODESK EDUCATIONAL PRODUCT