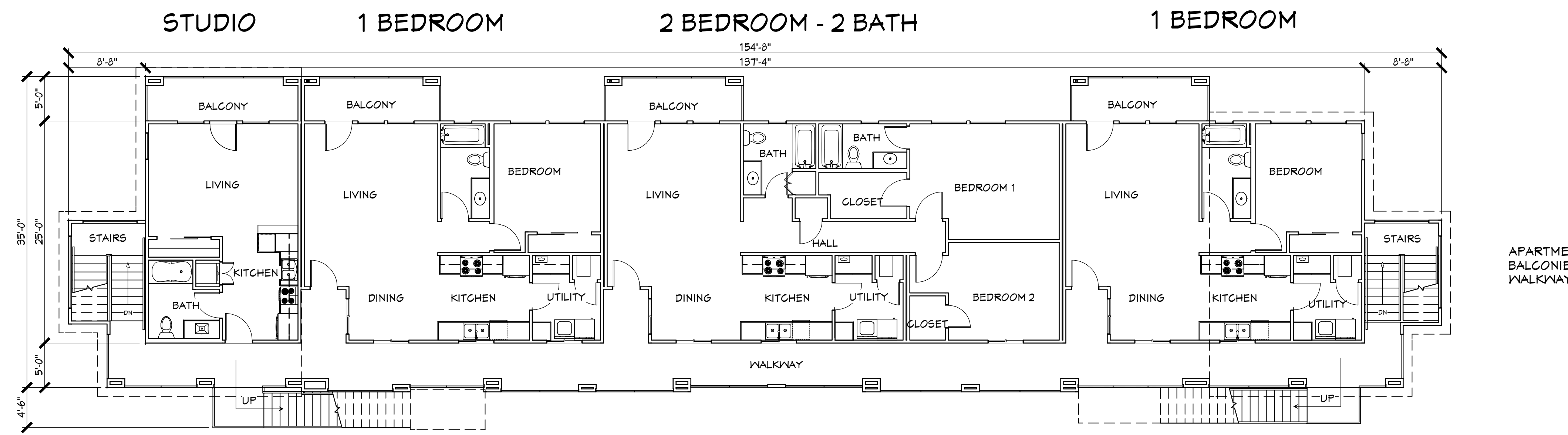


APARTMENT FLOOR AREA: 2,466 SQ. FT.
 BALCONIES: 234 SQ. FT.
 WALKWAY: 600 SQ. FT.

THIRD FLOOR

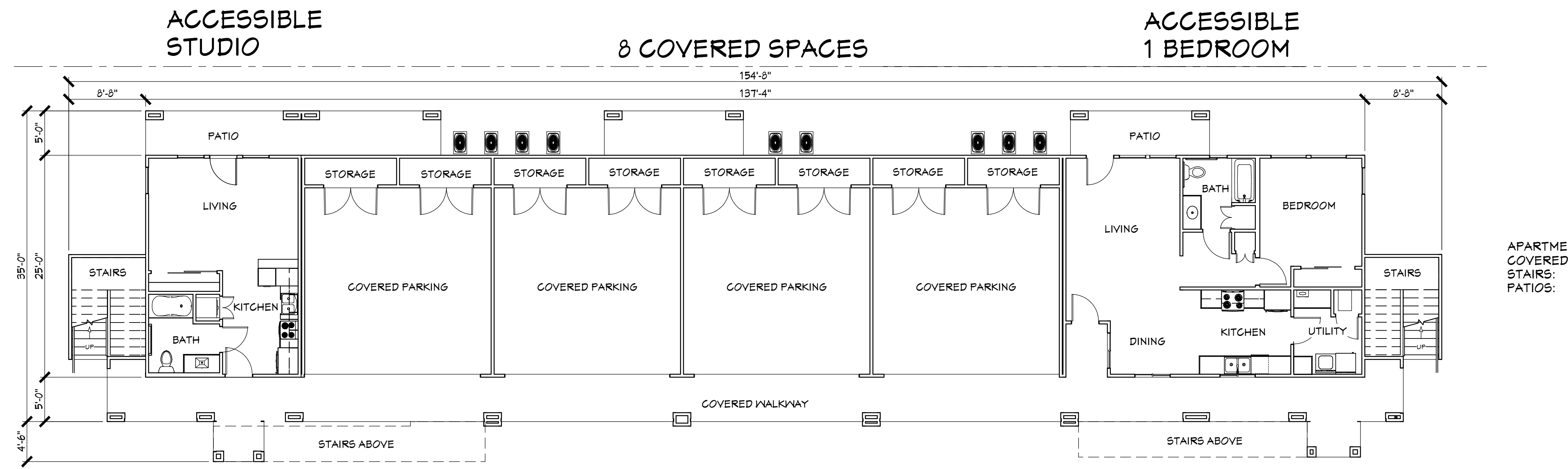
1/8"=1'-0"



APARTMENT FLOOR AREA: 3,344 SQ. FT.
 BALCONIES: 322 SQ. FT.
 WALKWAY: 819 SQ. FT.

SECOND FLOOR

1/8"=1'-0"



APARTMENT FLOOR AREA: 1258 SQ. FT.
 COVERED PARKING: 2142 SQ. FT.
 STAIRS: 204 SQ. FT.
 PATIOS: 166 SQ. FT.

FIRST FLOOR

1/8"=1'-0"

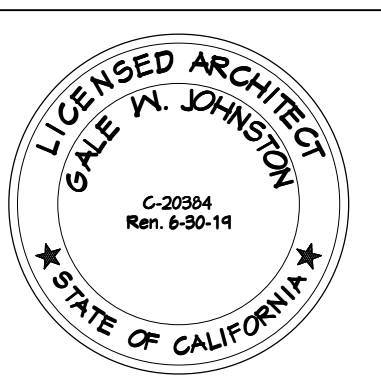
YFT PROPERTIES
 122 N. WASHINGTON AVE. #1
 MANTECA, CALIFORNIA 95336
 209 823.1773

San Joaquin Design Group
 Architecture & Structural Design
 7877 N. Pershing Avenue - Stockton, California 95207
 Phone: (209) 478-4013 Fax: (209) 478-0266
 billjohnston@sjdsg.net

The information, plans, designs and arrangements shown on this drawing are confidential and not to be reproduced, copied, or in part without express written permission.
 Bill Johnston - Architect
 James M. Tibbens - Civil Engineer

**649 APARTMENTS
 649 STEWART STREET
 MANTECA, CALIFORNIA**

**BUILDING
 FLOOR PLANS**
 SCALE: 1/8" = 1' - 0"



Drawn:
 Date: OCTOBER 23, 2017
 Revised:



FRONT ELEVATION

1/8"=1'-0"

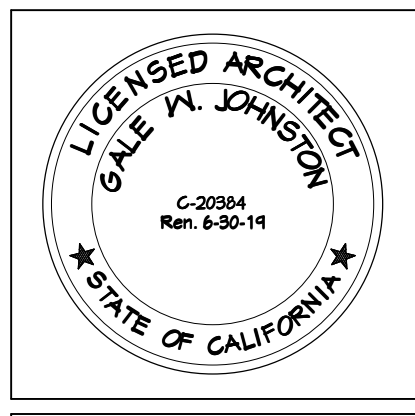
- EXTERIOR MATERIALS
1. ROOF - ASC SKYLINE METAL ROOF - 26 GA - 16" PANELS W/ ALL RELATED METAL TRIM - WEATHERED COPPER
 2. METAL SIDING - ASC 2 1/2" CORRUGATED - 26 GA - 24" PANELS & ALL RELATED TRIM - OLD TOWN GRAY
 3. STUCCO SIDING ONE - KELLY MOORE OAKWOOD 301
 4. STUCCO SIDING TWO - KELLY MOORE MALIBU BEIGE 216
 5. DOORS - KELLY MOORE RED VELVET
 6. STAIR RAILINGS, & GUARDRAILS - WEATHERED COPPER

San Joaquin Design Group
 Architecture & Structural Design
 7877 N. Pershing Avenue - Stockton, California 95207
 Phone: (209) 478-4013 Fax: (209) 478-0266
 billjohnston@sjdgroup.net

The information, plans, designs and arrangements shown on this drawing are confidential and shall remain the property of San Joaquin Design Group. No part of this drawing may be reproduced or transmitted in any form or by any means, electronic or mechanical, including photocopying, recording, or by any information storage and retrieval system, without the prior written permission of San Joaquin Design Group.
 Bill Johnston - Architect
 James M. Tibbens - Civil Engineer

649 APARTMENTS
 649 STEWART STREET
 MANTECA, CALIFORNIA

ELEVATIONS
 SCALE: 1/8" = 1' - 0"



Drawn:
 Date: OCTOBER 23, 2017
 Revised:

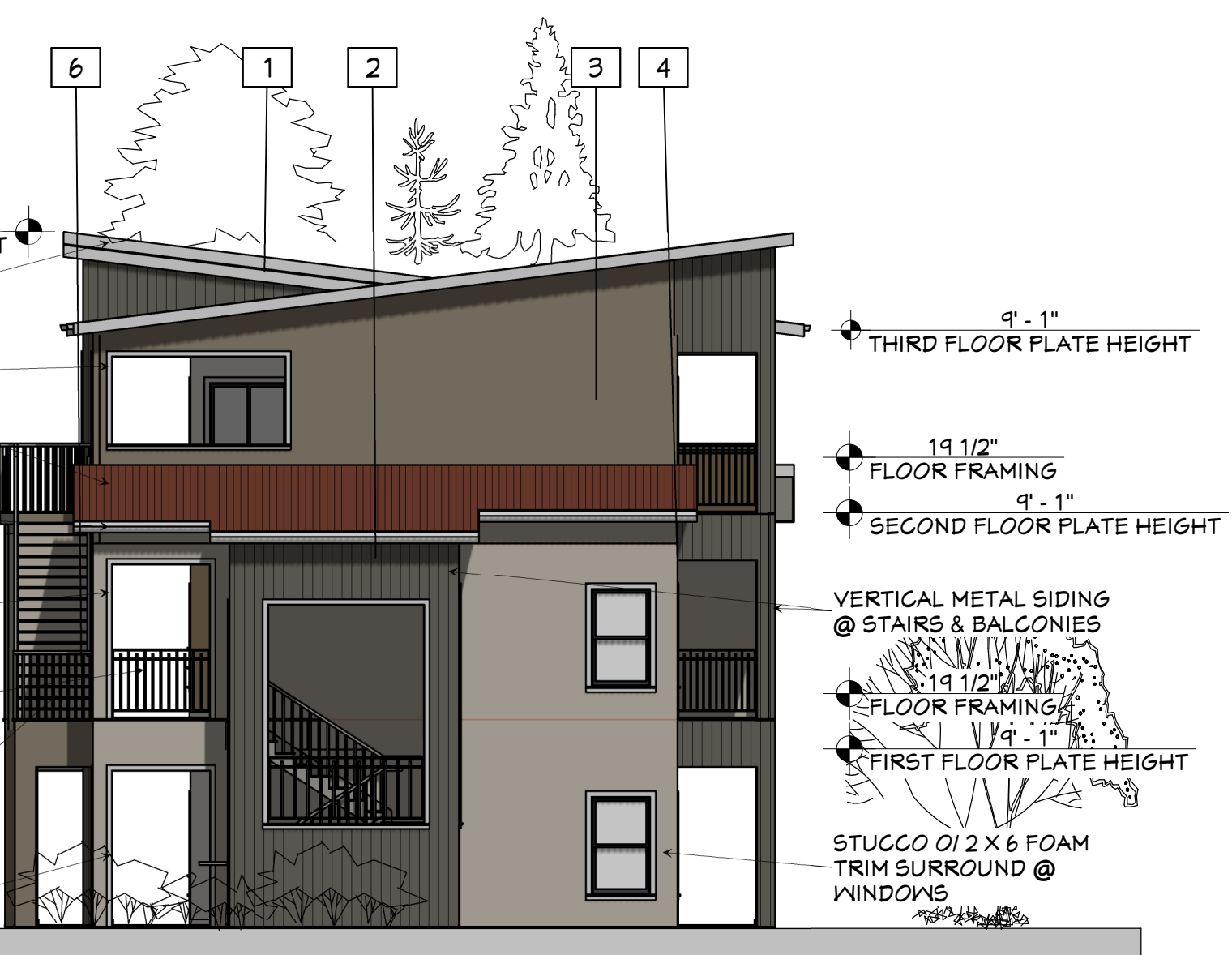
A-3

YFT PROPERTIES
 122 N. WASHINGTON AVE. #1
 MANTECA, CALIFORNIA 95336
 209.823.1773

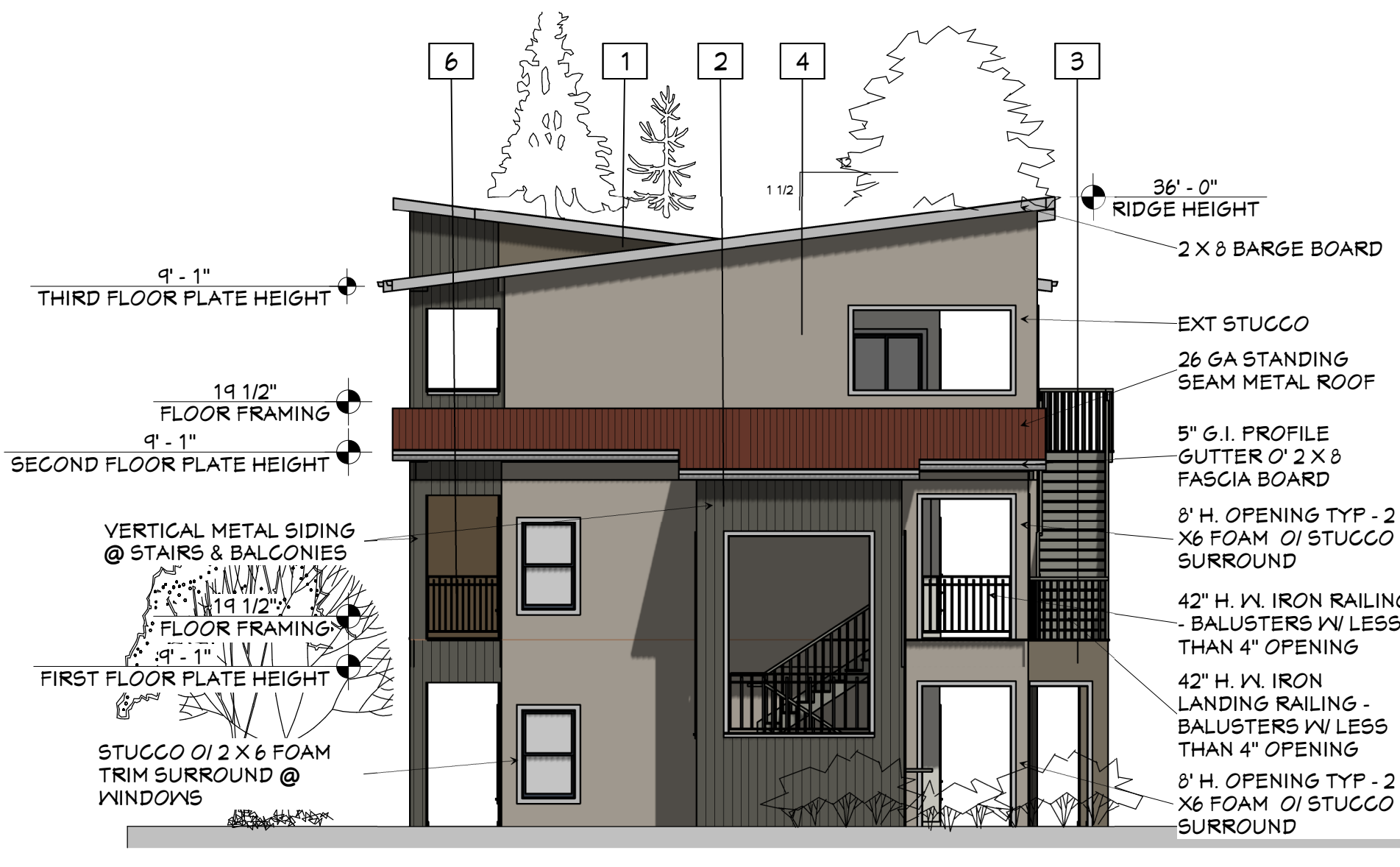


REAR ELEVATION

1/8"=1'-0"

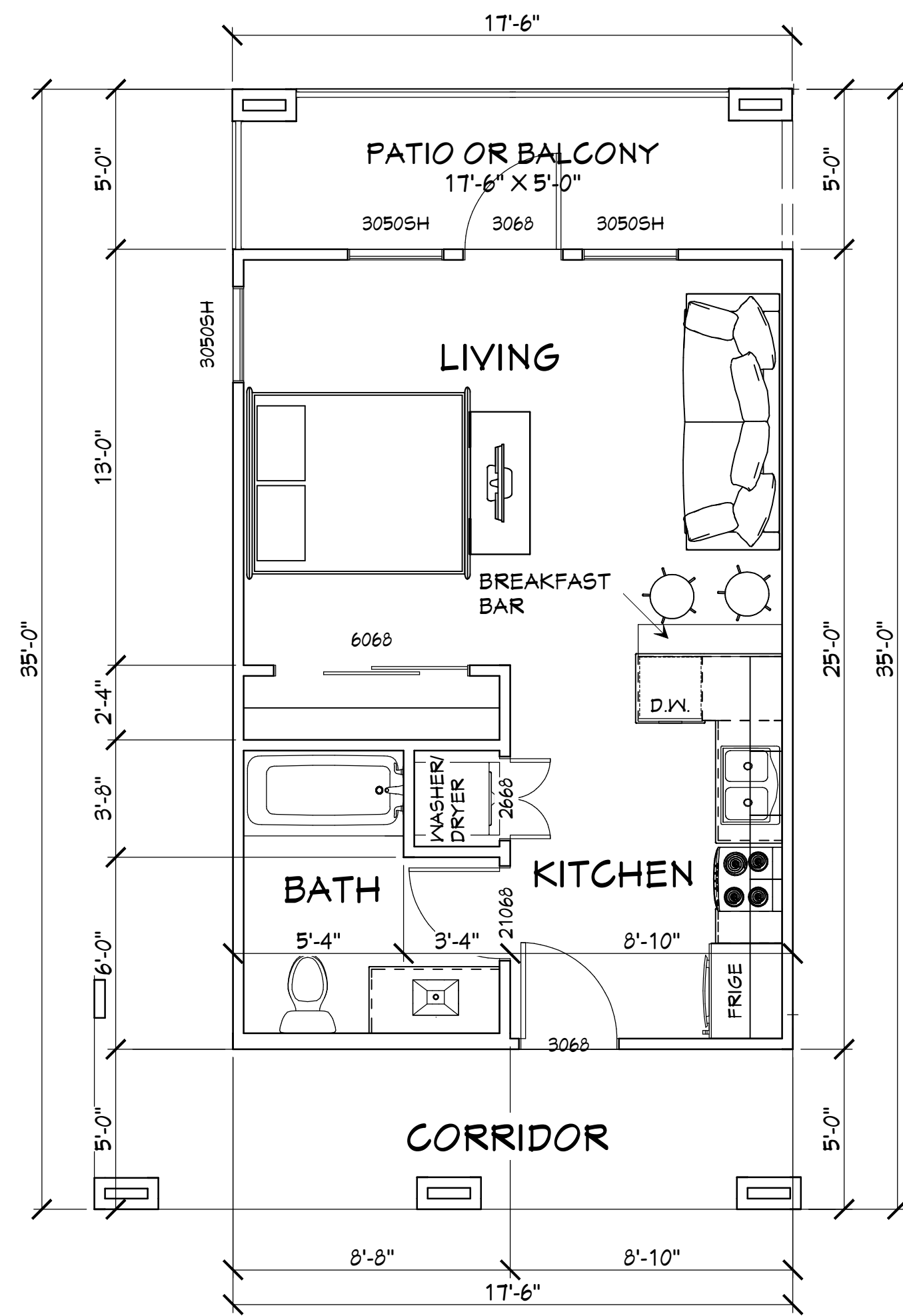


RIGHT ELEVATION



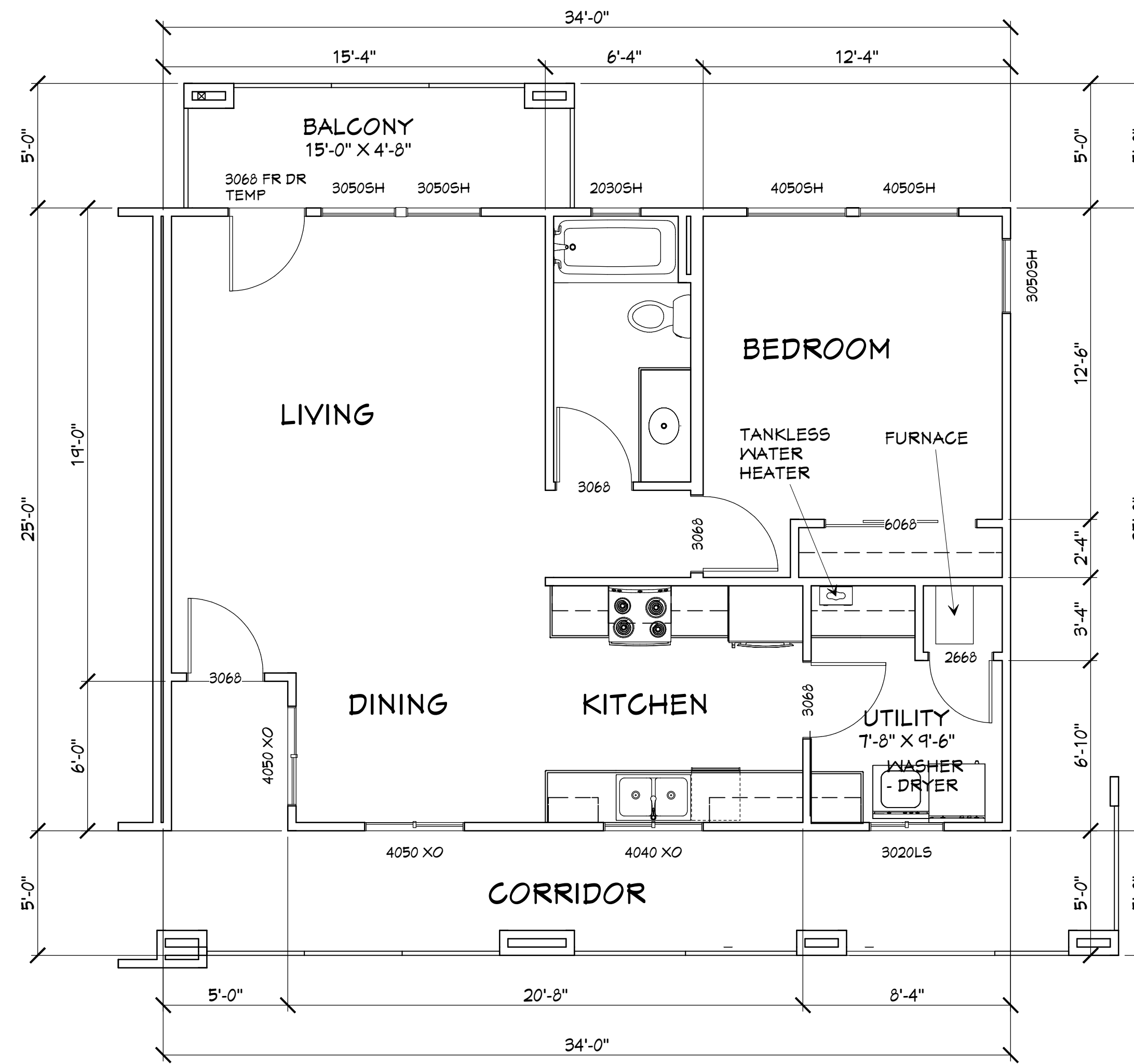
LEFT ELEVATION

1/8"=1'-0"



STUDIO APARTMENT

FLOOR AREA: 437 SQ. FT



ONE BEDROOM APARTMENT

FLOOR AREA: 820 SQ. FT

1/4"=1'-0"

San Joaquin Design Group

Architecture & Structural Design

7877 N. Pershing Avenue - Stockton, California 95207
 Phone: (209) 478-4013 Fax: (209) 478-0266
 billjohnston@sjdg.net

The information, plans, designs and arrangements shown on this drawing are confidential and shall remain the property of San Joaquin Design Group, Inc. No part of this drawing may be reproduced or transmitted in any form or by any means, electronic or mechanical, including photocopying, recording, or by any information storage and retrieval system, without written permission.

Bill Johnston - Architect
 James M. Tibbens - Civil Engineer

**649 APARTMENTS
 649 STEWART STREET
 MANTECA, CALIFORNIA**

**ONE BEDROOM &
 STUDIO FLOOR
 PLAN**

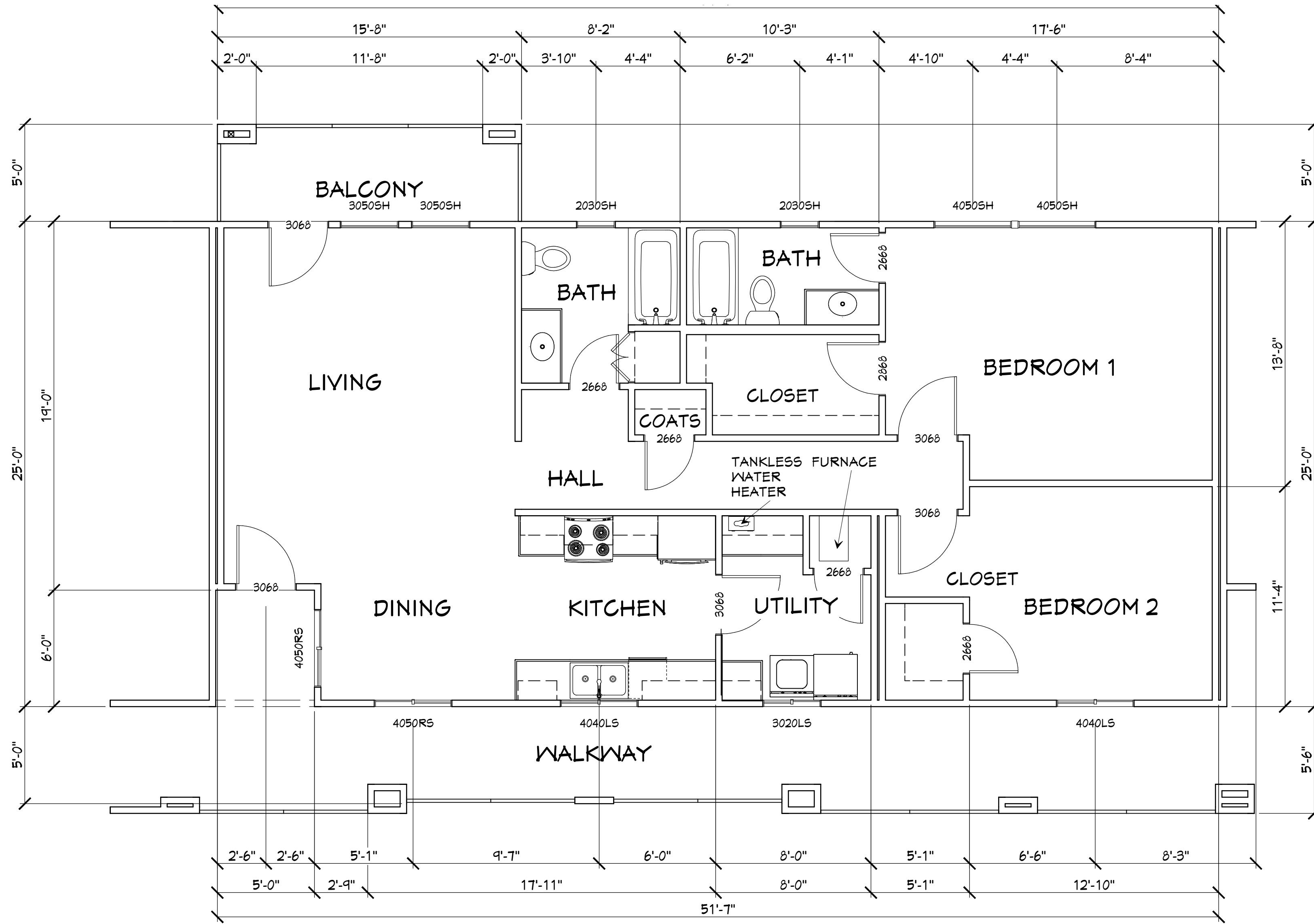
SCALE: 1/4" = 1' - 0"



Drawn:
 Date: OCTOBER 23, 2017
 Revised:

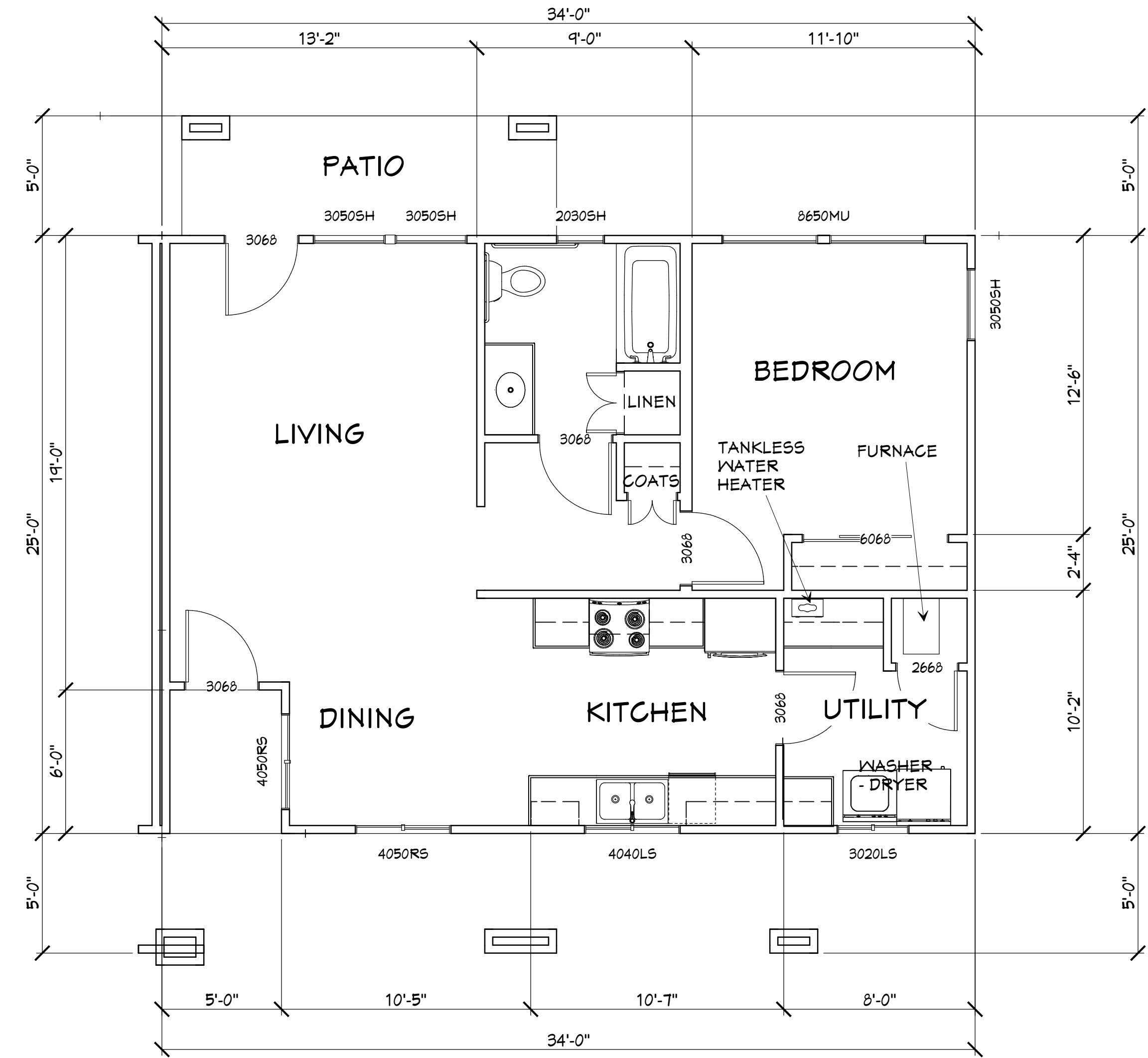
VFT PROPERTIES
 122 N. WASHINGTON AVE. #1
 MANTECA, CALIFORNIA 95336
 209 823.1773

A-4



2 BEDROOM 2 BATH APARTMENT

FLOOR AREA: 1260 SQ. FT



ACCESSIBLE ONE BEDROOM APARTMENT

FLOOR AREA: 820 SQ. FT

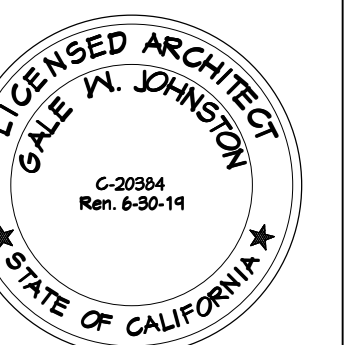
1/4"=1'-0"

The information, plans, designs and arrangements shown on this drawing are confidential and shall remain the property of the client. No part of this drawing may be reproduced or transmitted in any form or by any means, electronic or mechanical, including photocopying, recording, or by any information storage and retrieval system, without the prior written permission of the architect.

Bill Johnston - Architect
 James M. Tibbens - Civil Engineer

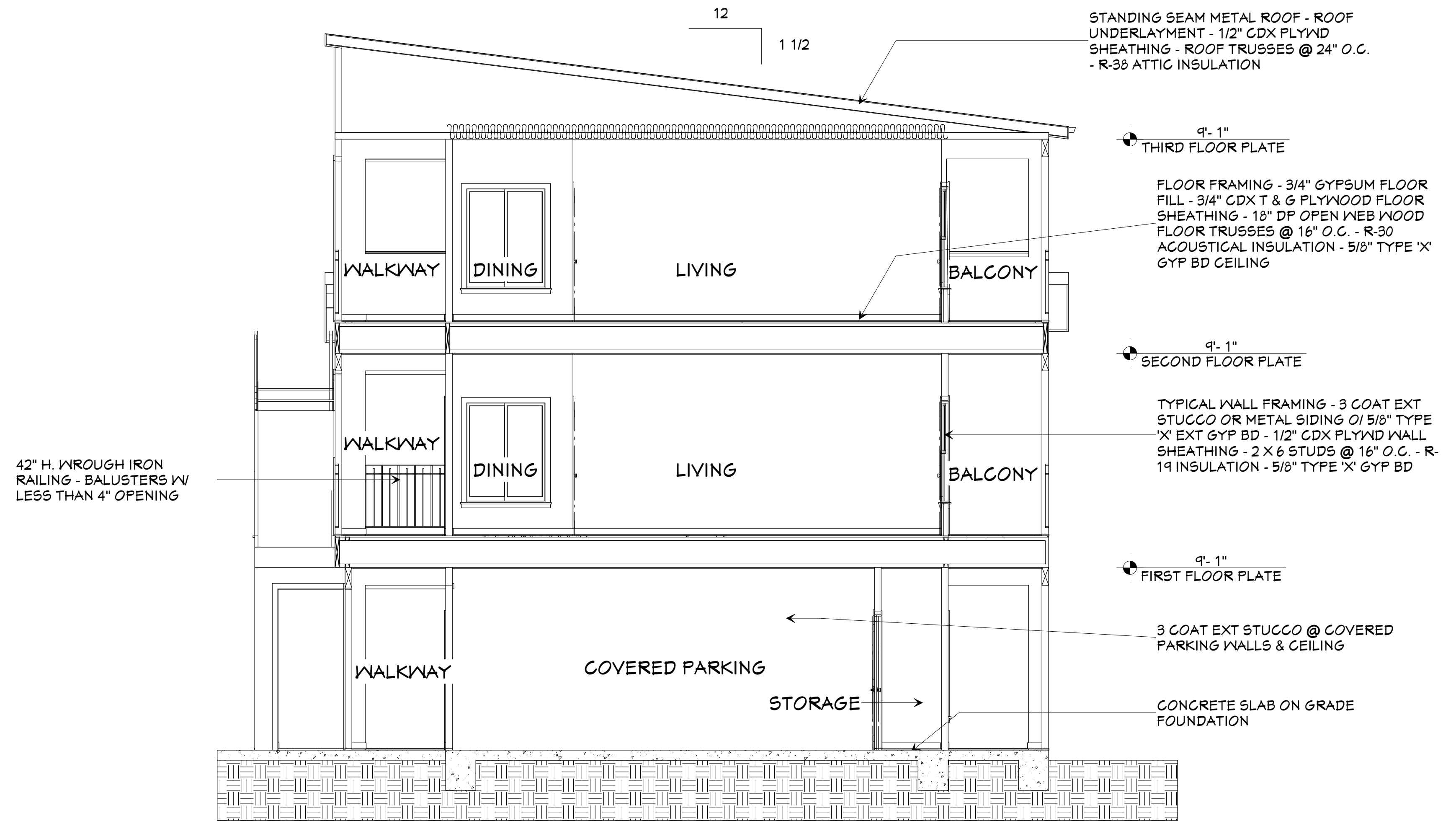
649 APARTMENTS
 649 STEWART STREET
 MANTECA, CALIFORNIA

2 BEDROOM 2 BATH &
 ACCESSIBLE 1
 BEDROOM FLOOR
 PLAN
 SCALE: 1/4" = 1' - 0"



Drawn:
 Date: OCTOBER 23, 2017
 Revised:

YFT PROPERTIES
 122 N. WASHINGTON AVE. #1
 MANTECA, CALIFORNIA 95336
 209 823.1773



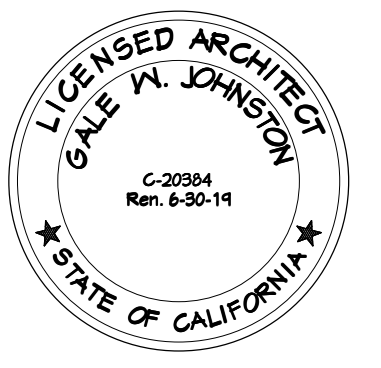
TYPICAL SECTION

San Joaquin Design Group
 Architecture & Structural Design
 7877 N. Pershing Avenue - Stockton, California 95207
 Phone: (209) 478-4013 Fax: (209) 478-0266
 billjohnston@sjdgroup.net

The information, plans, designs and arrangements shown on this drawing are confidential and shall remain the property of San Joaquin Design Group unless written permission is given.
 Bill Johnston - Architect
 James M. Tibbens - Civil Engineer

649 APARTMENTS
 649 STEWART STREET
 MANTECA, CALIFORNIA

TYPICAL SECTION
 SCALE: 1/4" = 1' - 0"



Drawn:
 Date: OCTOBER 23, 2017
 Revised:

VFT PROPERTIES
 122 N. WASHINGTON AVE. #1
 MANTECA, CALIFORNIA 95336
 209 823.1773