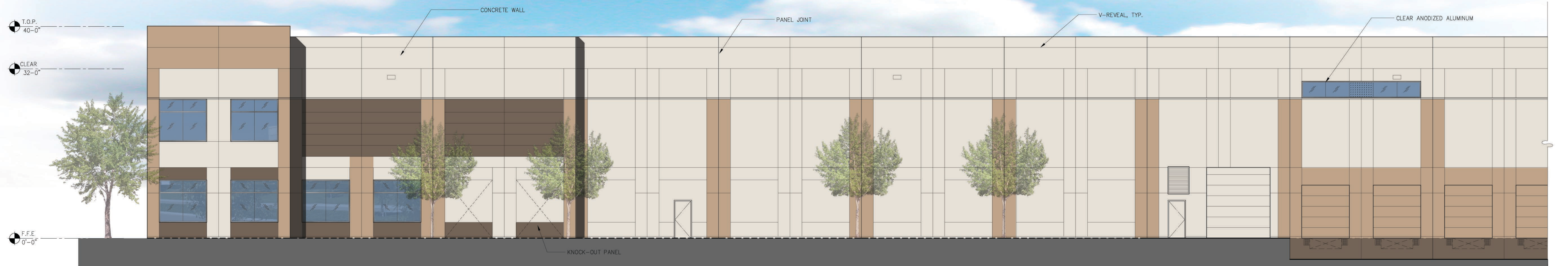


**NORTH ELEVATION**  
SCALE: 1/16"=1'-0"



**EAST ELEVATION**  
SCALE: 1/16"=1'-0"



**ENLARGED EAST ELEVATION**  
SCALE: 1/8"=1'-0"

- BASE PAINT
- ACCENT PAINT 1
- ACCENT PAINT 2
- GLAZING
- CLEAR ANODIZED ALUMINUM