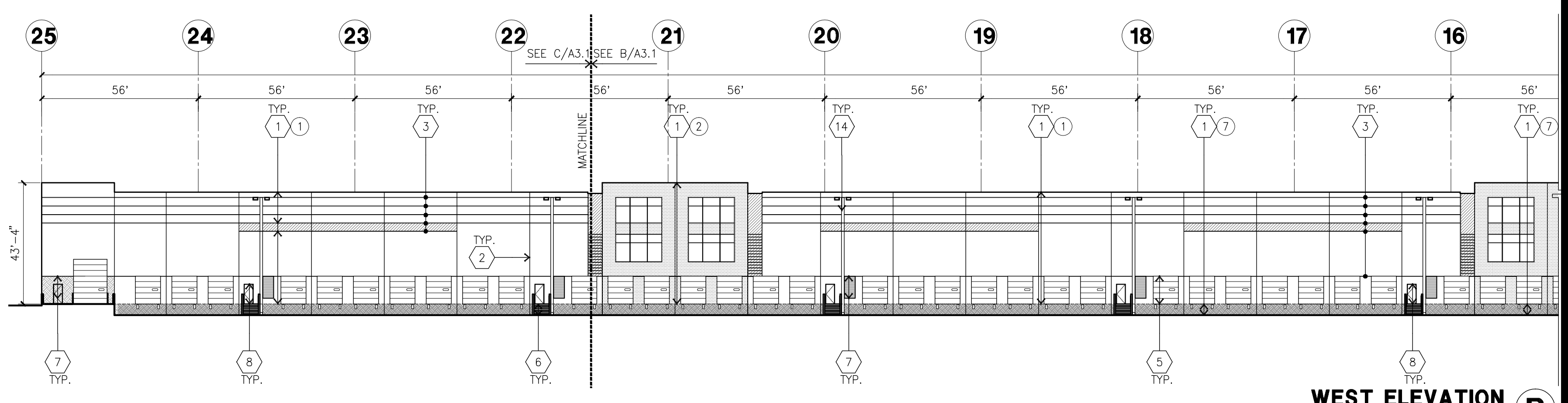
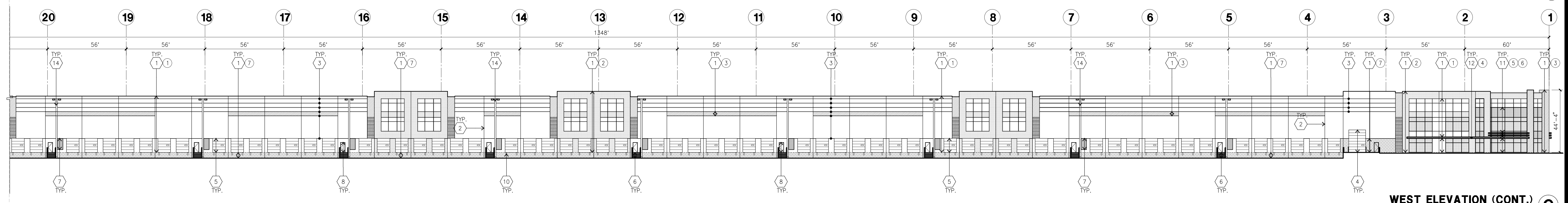


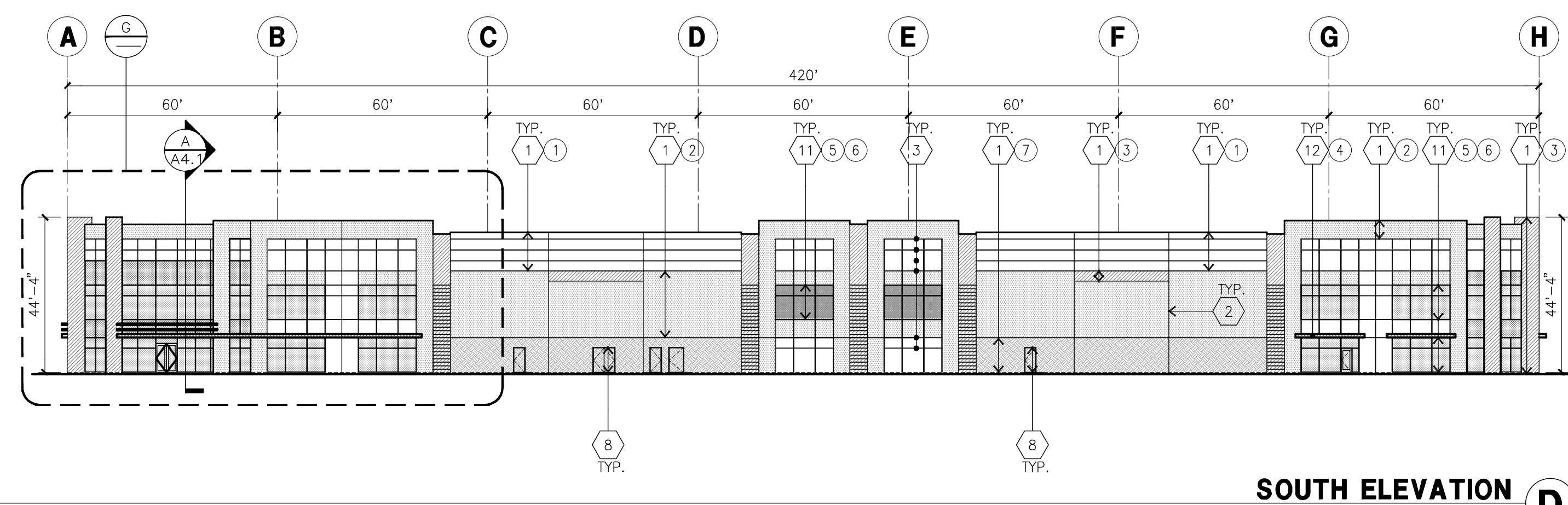
NORTH ELEVATION
scale: 1" = 30'-0"



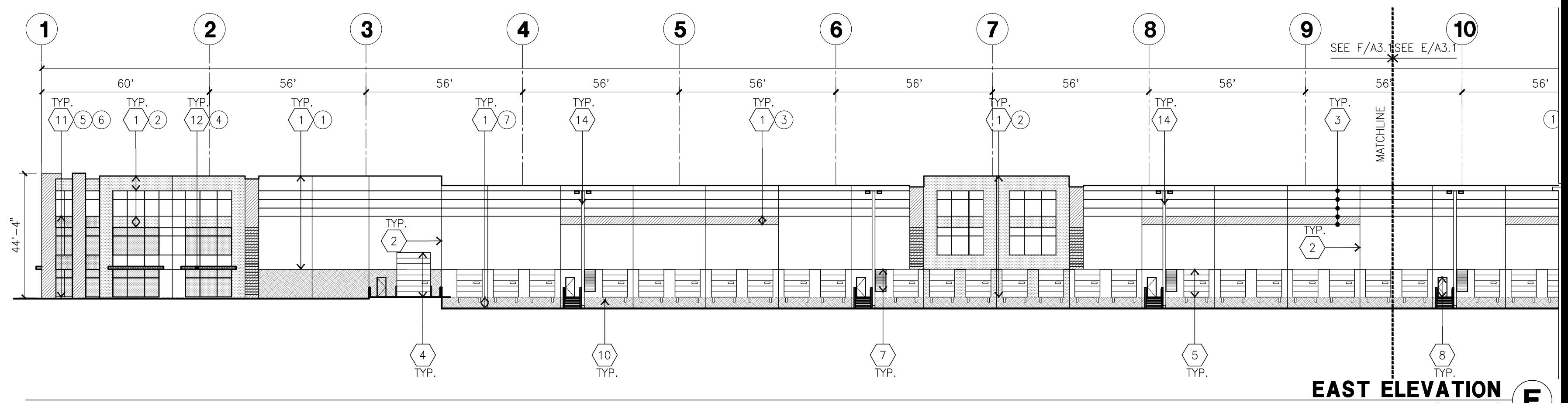
WEST ELEVATION
scale: 1" = 30'-0"



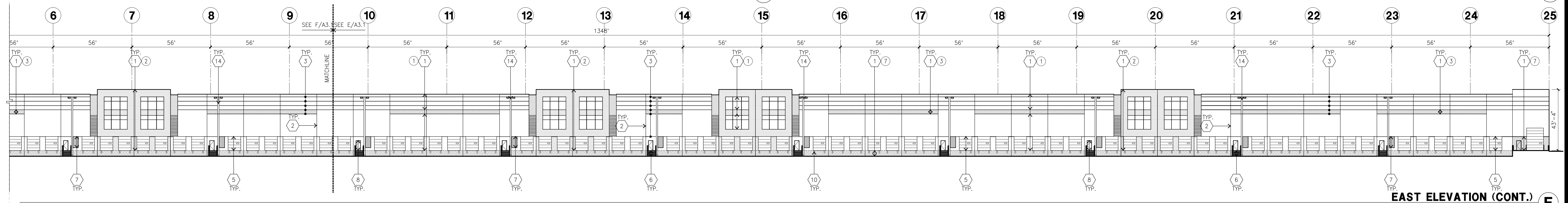
WEST ELEVATION (CONT.)
scale: 1" = 30'-0"



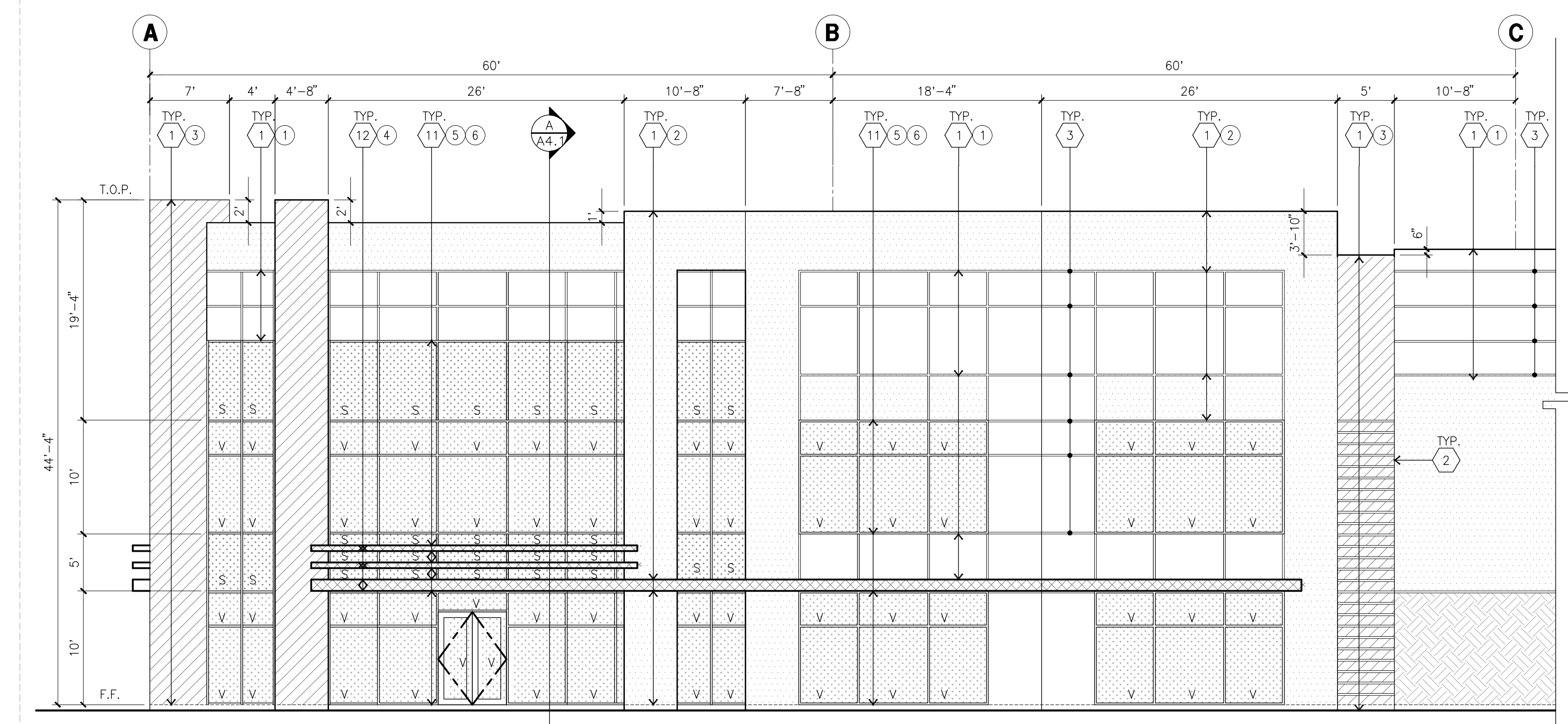
SOUTH ELEVATION
scale: 1" = 30'-0"



EAST ELEVATION
scale: 1" = 30'-0"



EAST ELEVATION (CONT.)
scale: 1" = 30'-0"



ENLARGED SOUTH ELEVATION
scale: 1/8" = 1'-0"

KEYNOTES - ELEVATIONS

- 1 CONCRETE TILT-UP PANEL (PAINTED). FINISH GRADE VARIES. SEE "C" DRAWINGS. WATERPROOF ALL WALLS WHERE GRADE IS HIGHER AND EXPOSED TO THE WEATHER ONE SIDE. WATERPROOFING TO BE PROTECTED WITH PROTECTION BOARD AND A MIN. OF 6" OF GRAVEL. PROVIDE TRENCH DRAIN AT BOTTOM AND DAYLIGHT TO CURB OR TAKE TO STORM DRAIN. NOT REQUIRED AT DOCK HIGH CONDITION OR AT RAMP WALLS.
- 2 PANEL JOINT.
- 3 PANEL REVEAL. ALL REVEALS TO HAVE A MAX. OF 3/8" CHAMFER. REVEAL COLOR TO MATCH ADJACENT BUILDING FIELD COLOR. U.N.O.
- 4 OVERHEAD DOOR @ DRIVE THRU. PROVIDE COMPLETE WEATHER-STRIPPING PROTECTION ALL AROUND.
- 5 OVERHEAD DOOR @ DOCK HIGH. PROVIDE COMPLETE WEATHER-STRIPPING PROTECTION ALL AROUND.
- 6 CONCRETE STAIR, LANDING AND GUARDRAIL W/ METAL PIPE HANDRAIL. PROVIDE NON-SLIP NOSING TO MEET ADA REQUIREMENTS. PROVIDE CONTRASTING COLORED 3" WIDE WARNING STRIPE INTEGRAL TO CONCRETE AT TOP LANDING AND BOTTOM TREAD PER ADA REQUIREMENTS.
- 7 4"W x 8"H METAL LOUVER. PAINT TO MATCH BUILDING COLOR.
- 8 HOLLOW METAL DOORS. PROVIDE COMPLETE WEATHER STRIPPING ALL AROUND DOOR. PROVIDE FOR RAIN DIVERTER ABOVE DOOR.
- 9 NOT USED
- 10 DOCK DOOR BUMPER
- 11 ALUMINUM STOREFRONT FRAMING WITH TEMPERED GLAZING
- 12 METAL CANOPY (PAINTED).
- 13 FUTURE KNOCK OUT PANELS.
- 14 EXTERIOR METAL DOWNSPOUT WITH OVERFLOW SCUPPER. PROVIDE STEEL GUARD WHERE REQUIRED. PAINTED TO MATCH BUILDING.

GENERAL NOTES - ELEVATIONS

- A. ALL PAINT COLOR CHANGES TO OCCUR AT INSIDE CORNERS UNLESS NOTED OTHERWISE.
- B. ALL PAINT FINISHES ARE TO BE FLAT UNLESS NOTED OTHERWISE.
- C. T.O.P. EL. = TOP OF PARAPET ELEVATION.
- D. F.F. = FINISH FLOOR ELEVATION.
- E. STOREFRONT CONSTRUCTION: GLASS, METAL ATTACHMENTS AND LINTELS SHALL BE DESIGNED TO RESIST 85 MPH. EXPOSURE "C" WINDS. CONTRACTOR SHALL BE SUBMIT SHOP DRAWINGS PRIOR TO INSTALLATION.
- F. CONTRACTOR SHALL FULLY PAINT ONE CONCRETE PANEL W/ SELECTED COLORS. ARCHITECT AND OWNER SHALL APPROVE PRIOR TO PAINTING REMAINDER OF BUILDING.
- G. BACK SIDE OF PARAPETS TO HAVE SMOOTH FINISH AND BE PAINTED WITH ELASTOMERIC PAINT.
- H. FOR SPANDREL GLAZING, ALLOW SPACE BEHIND SPANDREL TO BREATHE.

COLOR SCHED. - ELEVATIONS

- 1 CONCRETE TILT-UP PANEL PAINT BRAND: SHERWIN WILLIAMS SW 6148 WOOD SKIN
- 2 CONCRETE TILT-UP PANEL PAINT BRAND: SHERWIN WILLIAMS SW 7052 GRAY AREA
- 3 CONCRETE TILT-UP PANEL PAINT BRAND: SHERWIN WILLIAMS SW 6374 TORCHLIGHT
- 4 METAL CANOPY PAINT BRAND: SHERWIN WILLIAMS METALLICS SW 301 MONORAIL SILVER (CLEARCOAT) @ METAL CANOPY
- 5 MULLIONS PAINT BRAND: CLEAR ANODIZED
- 6 GLAZING PAINT BRAND: BLUE REFLECTIVE
- 7 CONCRETE TILT-UP PANEL PAINT BRAND: SHERWIN WILLIAMS SW 7053 ADOPTIVE SHADE

GLAZING LEGEND

NOTE: ALL EXTERIOR AND INTERIOR GLAZING SHALL BE TEMPERED.

TEMPERED SPANDREL GLASS
TEMPERED VISION GLASS

GLAZING: PPG VISTACOOL (2) PACIFICA + SOLARBAN 60 (3) CLEAR U: 0.27, SHGC: 0.21, VLT: 26%

1" INSULATED GLASS UNIT WITH 1/2" AIRSPACE AND (2) 1/4" LITES

SPANDREL: 1/4" VISTACOOL PACIFICA SPANDREL W/ HARMONY BLUE OPACICOAT PAINTED ON REFLECTIVE

MULLIONS: ANODIZED CLEAR

COLOR LEGEND

