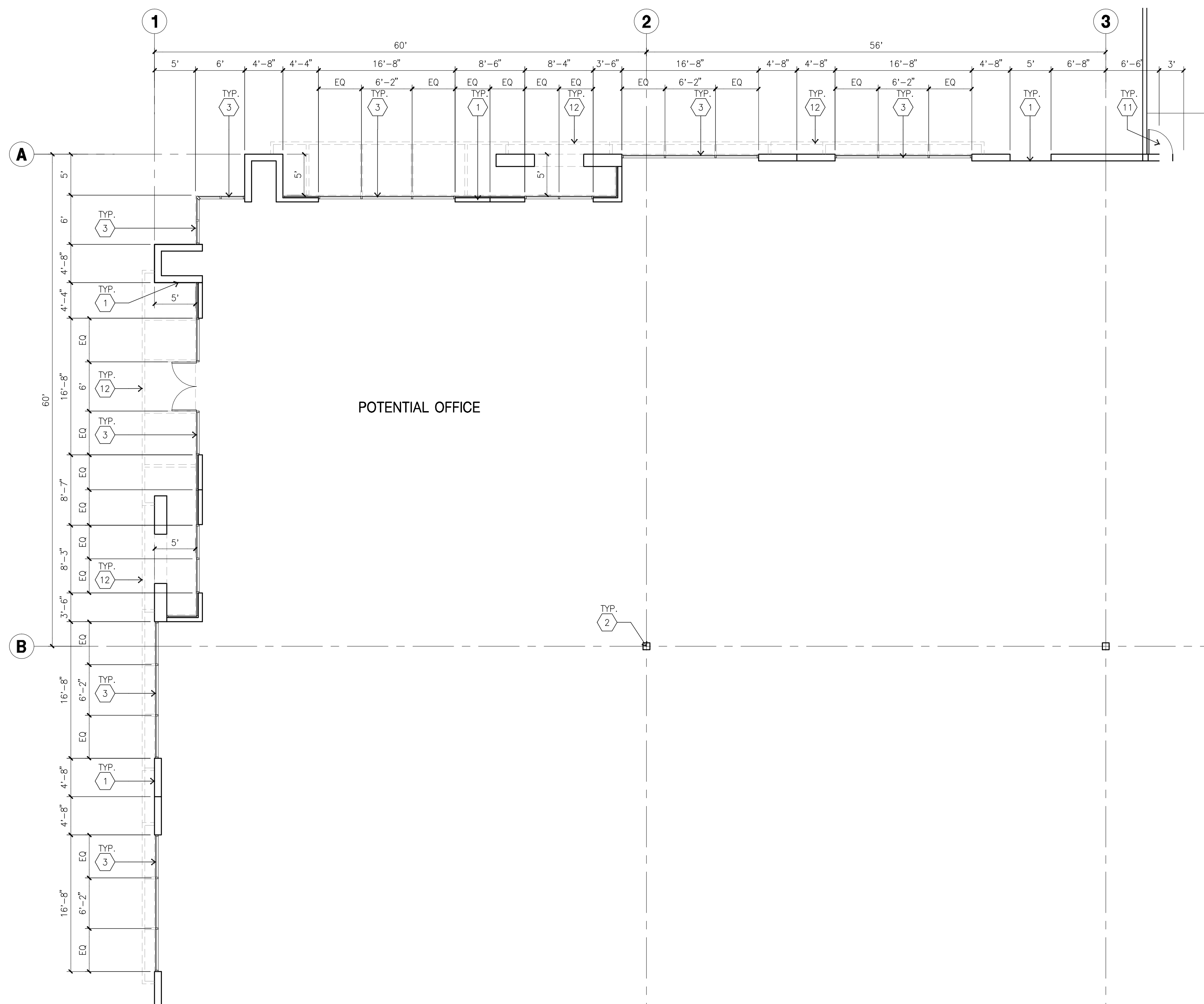
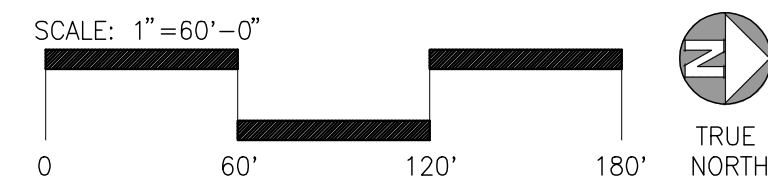
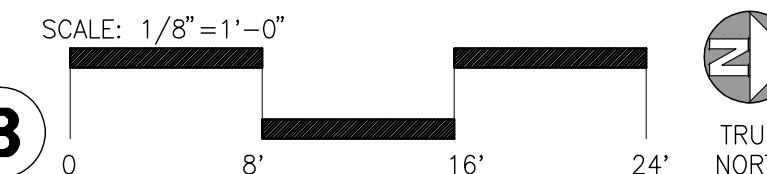


OVERALL FLOOR PLAN
 scale: 1"=60'-0"



ENLARGED FLOOR PLAN
 scale: 1/8"=1'-0"



KEYNOTES - FLOOR PLAN

- 1 CONCRETE TILT-UP PANEL.
- 2 STRUCTURAL STEEL COLUMN.
- 3 TYPICAL STOREFRONT SYSTEM WITH GLAZING.
- 4 CONCRETE RAMP.
- 5 9'-0" X 10' TRUCK DOOR, SECTIONAL O.H., STANDARD GRADE.
- 6 EXTERIOR, UNPAINTED, GALVANIZED METAL STAIR
- 7 5'-6"x5'-6"x4" THICK CONCRETE EXTERIOR LANDING PAD.
- 8 KNOCK OUT PANEL
- 9 DOCK DOOR BUMPER
- 10 12' X 14' DRIVE THRU. SECTIONAL O.H., STANDARD GRADE.
- 11 3'X7' HOLLOW METAL EXTERIOR MAN DOOR.
- 12 TUBE STEEL OPEN CANOPY
- 13 SOFFIT LINE ABOVE
- 14 NOT USED
- 15 EXTERIOR DOWNSPOUT WITH OVERFLOW SCUPPER.
- 16 Z GUARD
- 17 NOT USED

GENERAL NOTES - FLOOR PLAN

1. THIS BUILDING IS DESIGNED FOR HIGH PILE STORAGE WITH FIRE ACCESS MAN DOORS AT 100' +/-, A SEPARATE PERMIT WILL BE REQUIRED FOR ANY RACKING/CONVEYER SYSTEMS.
2. FIRE HOSE LOCATIONS SHALL BE APPROVED PER FIRE DEPARTMENT.
3. THE BUILDING FLOOR SLAB IS SLOPED.
4. PROVIDE 6" DIA. CONCRETE BOLLARD AT ALL FIRE RISER AND UNPROTECTED INTERIOR ROOF DRAIN.
5. WAREHOUSE INTERIOR CONCRETE WALLS AND COLUMNS PAINT PER OUTLINE SPECS. ALL GYP. BD. WALLS IN WAREHOUSE TO RECEIVE 1 COAT OF WHITE PRIMER.
6. ALL DIMENSIONS ARE TO THE FACE OF CONCRETE PANEL WALL, GRIDLINE, OR FACE OF STUD U.N.O.
7. FOR DOOR TYPES AND SIZES, SEE DETAIL SHEET A5.1. NOTE: ALL DOORS PER DOOR SCHEDULE ARE FINISH OPENINGS.
8. CONTRACTOR TO PROTECT AND KEEP THE FLOOR SLAB CLEAN. ALL EQUIPMENT TO BE DIAPERED INCLUDING CARS AND TRUCKS.



hpa, inc.
 383 4th street, suite 101
 oakland, ca 94607
 tel: 949-862-2113
 fax: 949-863-0851
 email: hpa@hparchs.com



EXETER PROPERTY GROUP
 333-HEGENBERGER ROAD STE. #310
 OAKLAND, CA 94621
 tel: 209-915-7783

Project:

2325 WEST LOUISE AVENUE
 MANTECA, CA

Consultants:

CIVIL	KIER & WRIGHT
STRUCTURAL	-
MECHANICAL	-
PLUMBING	-
ELECTRICAL	-
LANDSCAPE	GREEN DESIGN
FIRE PROTECTION	-
SOILS ENGINEER	-
LIGHTING	TURTLE & HUGHES

Title: Overall floor plan

Project Number: 15362.00
 Drawn by: JL
 Date: 09/27/2017

Revision:

Sheet:

DAB-A2.1