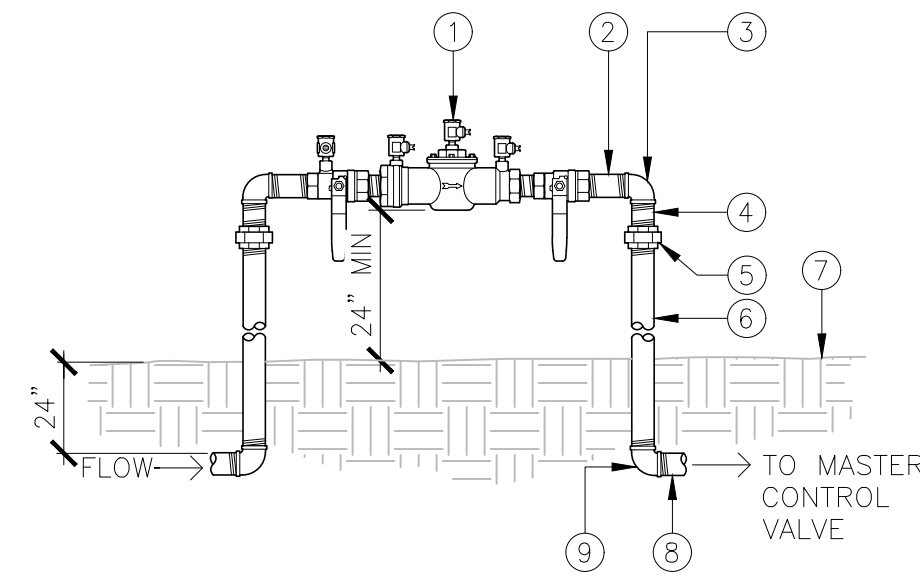
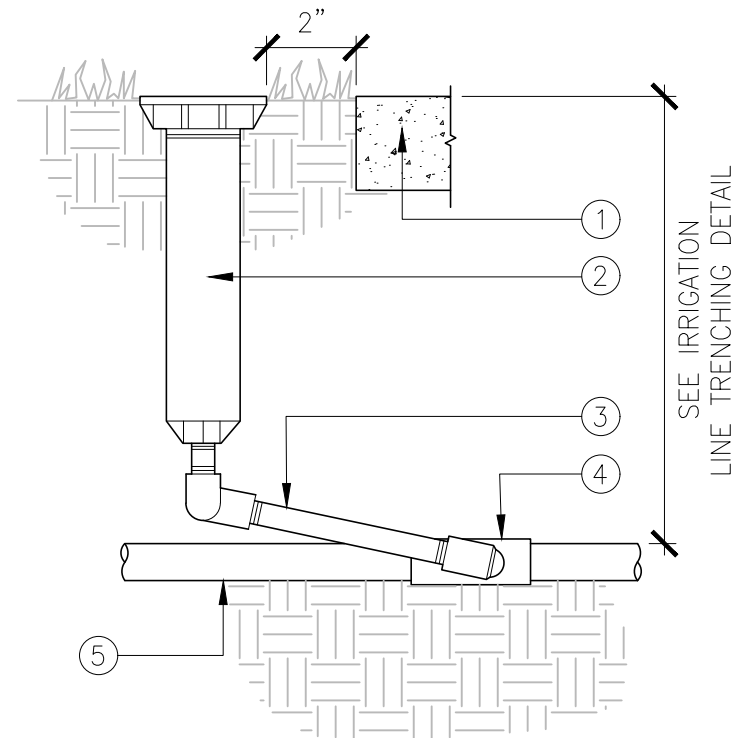


- ① REDUCED PRESSURE BACKFLOW PREVENTER (SEE LEGEND FOR SIZE AND MANUFACTURER)
- ② GALVANIZED NIPPLE
- ③ GALVANIZED 90° ELBOW
- ④ GALVANIZED NIPPLE
- ⑤ GALVANIZED UNION
- ⑥ GALVANIZED NIPPLE
- ⑦ FINISH GRADE
- ⑧ PVC MAINLINE W/PVC MALE ADAPTER
- ⑨ GALVANIZED 90° ELBOW



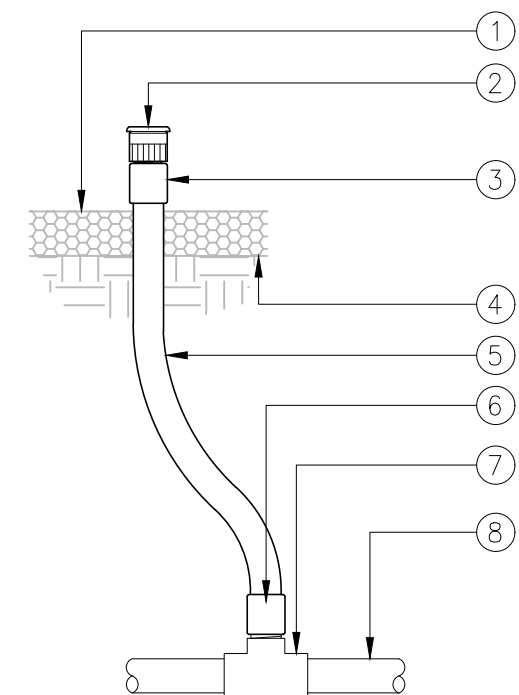
No. REDUCED PRESSURE DEVICE NOT TO SCALE

- ① CONCRETE PAVEMENT, MOW BAND, HEADER, ETC.
- ② POP-UP SPRINKLER (SEE LEGEND FOR TYPE AND MANUFACTURER)
- ③ SCH 80 TRIPLE SWING JOINT ASSEMBLY WITH SCH 80 ELS AND SCH 80 NIPPLES (DIA. AND LENGTH AS REQUIRED)
- ④ PVC SCH 40 TEE (SxSxT) (SIZE PER LATERAL LINE)
- ⑤ PVC LATERAL LINE (SEE IRRIGATION PLAN FOR SIZE)



No. POP-UP SPRAY HEAD NOT TO SCALE

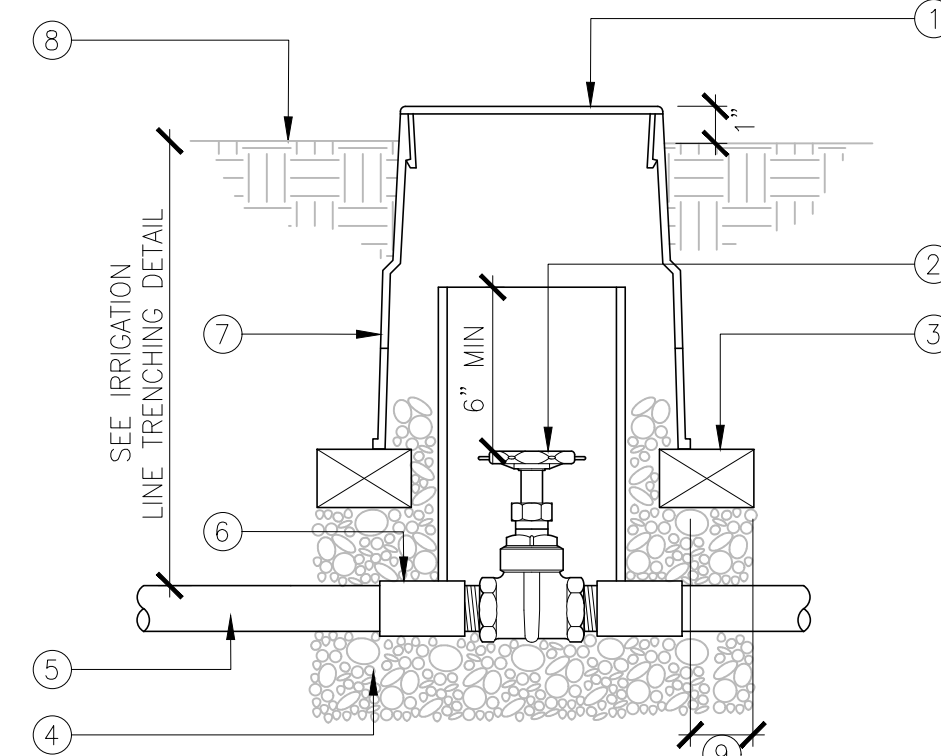
- ① TOP OF MULCH
- ② EMITTER, SEE IRRIGATION LEGEND FOR MODEL NUMBER
- ③ 1/2" SLIP X HORIZONTAL 1/2" MPT SCH 40 PVC MALE ADAPTER
- ④ FINISH GRADE
- ⑤ BLACK 1/2" IPS FLEXIBLE PVC HOSE
- ⑥ 1/2" SLIP X 1/2" MPT SCH 40 PVC MALE ADAPTER
- ⑦ PVC SCH 40 TEE OR ELL
- ⑧ PVC LATERAL PIPE



NOTE:
A. USE 795 GLUE OR OTHER MAN. RECOMMENDED GLUE FOR PVC FITTINGS.

No. SHRUB EMITTER NOT TO SCALE

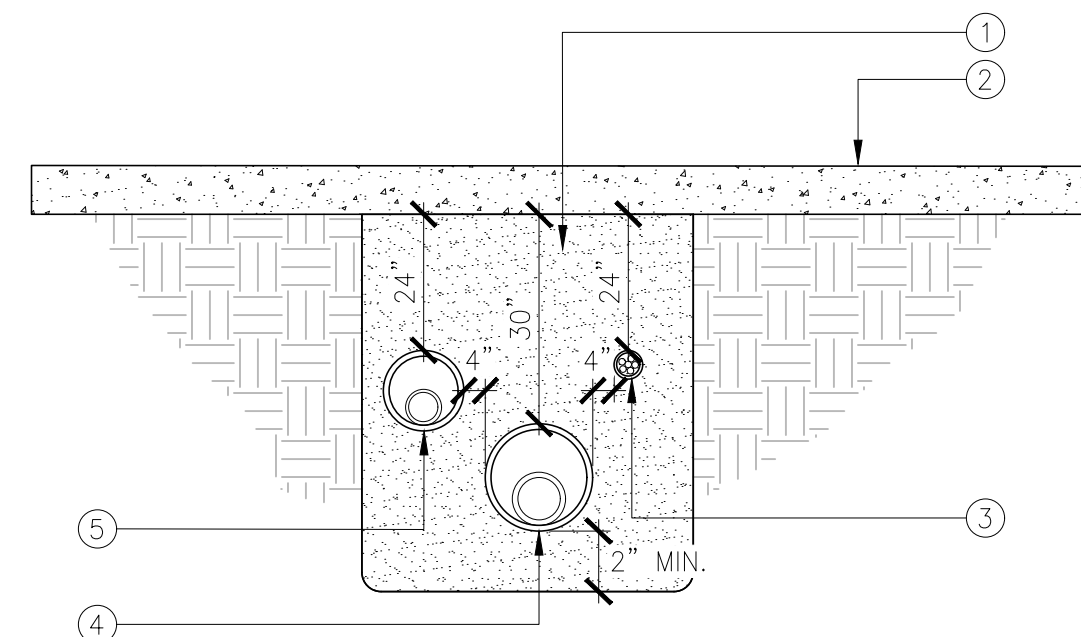
- ① ROUND VALVE BOX AND LOCKING LID
- ② GATE VALVE (SEE IRRIGATION LEGEND, SHEET #)
- ③ COMMON BRICK (4)
- ④ 3" MIN. OF PEA GRAVEL
- ⑤ IRRIGATION MAIN LINE
- ⑥ PVC SCH 80 MALE ADAPTER (TYP)
- ⑦ 8" DIA. PVC CLASS 160 PIPE (LENGTH AS REQUIRED)
- ⑧ FINISH GRADE
- ⑨ INSTALL DRAIN ROCK 2" MIN. BEYOND PERIMETER



No. GATE VALVE NOT TO SCALE

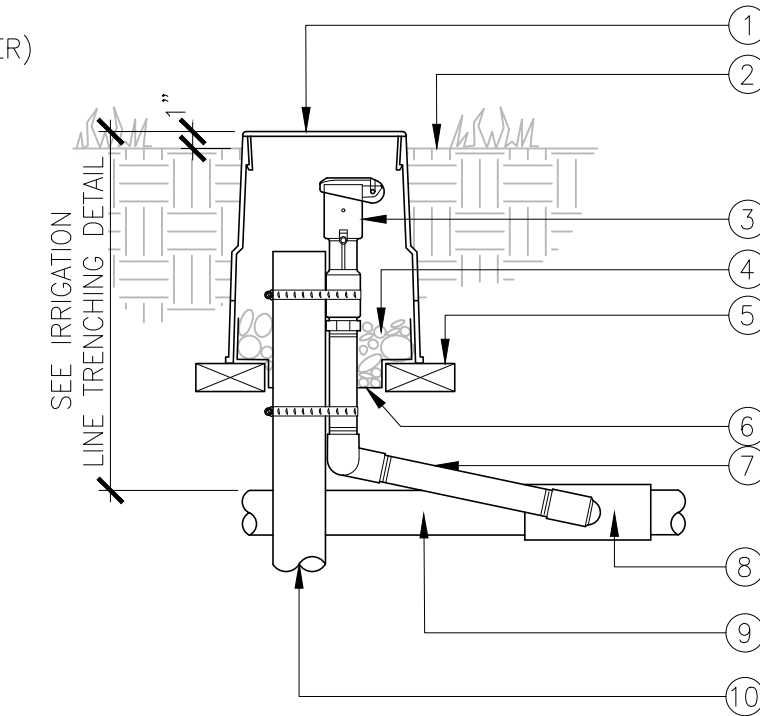
- ① SAND BACKFILLED TO 95% RELATIVE COMPACTION
- ② PAVING
- ③ LOW VOLTAGE WIRING SLEEVE
- ④ SCH 40 MAIN LINE SLEEVE
- ⑤ SCH 40 LATERAL LINE SLEEVE

NOTE:
A. SIZE AND LOCATION OF SLEEVES PER IRRIGATION PLANS.

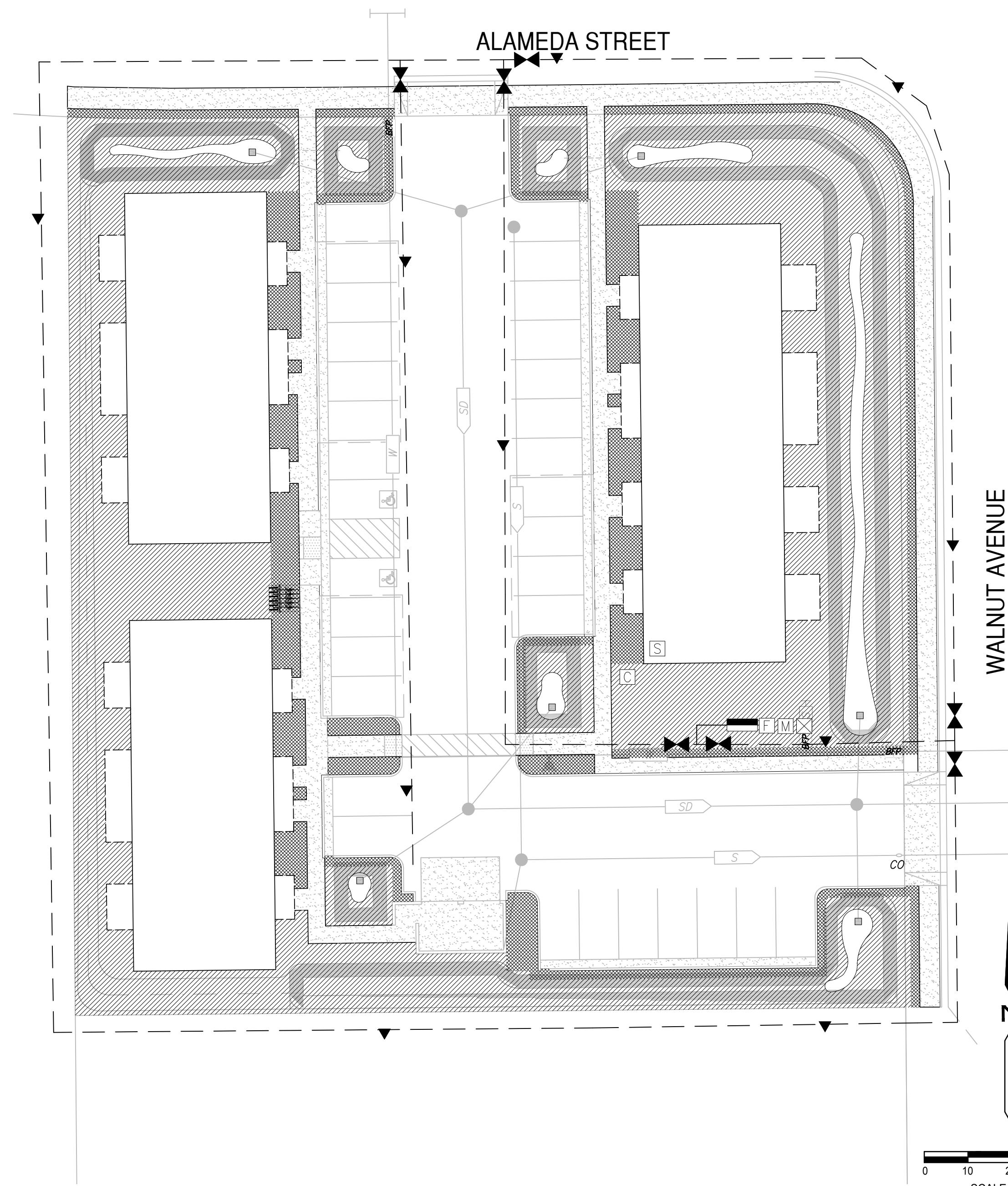


No. SLEEVE INSTALLATION NOT TO SCALE

- ① ROUND VALVE BOX WITH LOCKING LID
- ② FINISH GRADE
- ③ QUICK COUPLING VALVE (SEE LEGEND FOR TYPE AND MANUFACTURER)
- ④ 3" MIN. OF PEA GRAVEL
- ⑤ COMMON BRICK FOR SUPPORT (2)
- ⑥ LANDSCAPE FABRIC
- ⑦ PRE-MANUFACTURED SWING JOINT W/ O-RING AND THREAD STOPS
- ⑧ PVC SCH 40 TEE (SxSxT), SIZE PER MAIN LINE
- ⑨ PVC MAINLINE, SEE IRRIGATION PLAN FOR SIZE
- ⑩ 2" PIPE 30" LONG MIN. W/ TWO STAINLESS STEEL GEAR CLAMPS



No. QUICK COUPLER VALVE NOT TO SCALE



| IRRIGATION LEGEND | | | | | | | |
|-----------------------------|--------------|--|------|------|------|------|-----|
| SYMBOL | MANUFACTURER | DESCRIPTION | Q | TH | H | F | PSI |
| SHRUB SPRAY | | | | | | | |
| [Symbol] | RAIN BIRD | 1806 5R POP-UP | 0.10 | 0.13 | 0.20 | 0.40 | 30 |
| [Symbol] | RAIN BIRD | 1806 8R POP-UP | 0.26 | 0.35 | 0.52 | 1.05 | 30 |
| [Symbol] | RAIN BIRD | 1806 10R POP-UP | 0.40 | 0.52 | 0.60 | 1.60 | 30 |
| [Symbol] | RAIN BIRD | 1806 12R POP-UP | 0.65 | 0.87 | 1.30 | 2.60 | 30 |
| [Symbol] | RAIN BIRD | 1806 15R POP-UP | 0.93 | 1.23 | 1.85 | 3.70 | 30 |
| [Symbol] | RAIN BIRD | 1806 R13-17 POP-UP | 0.48 | 0.62 | 0.92 | 1.85 | 40 |
| [Symbol] | RAIN BIRD | 1806 R17-24 POP-UP | 0.67 | 1.15 | 1.73 | 3.48 | 40 |
| [Symbol] | RAIN BIRD | 1806 15LCS/RCS POP-UP | | | | 0.49 | 30 |
| [Symbol] | RAIN BIRD | 1806 15SST POP-UP | | | | 1.21 | 30 |
| SHRUB BUBBLER | | | | | | | |
| [Symbol] | RAIN BIRD | 1401 BUBBLER | | | | 0.25 | 30 |
| RWS TREE BUBBLER | | | | | | | |
| [Symbol] | RAIN BIRD | ROOT WATERING SYSTEM | | | | 0.25 | 30 |
| IRRIGATION EQUIPMENT | | | | | | | |
| [Symbol] | RAIN BIRD | PEB SERIES REMOTE CONTROL VALVE. SEE PLAN FOR SIZE. PLACE IN BOX WITH LID. | | | | | |
| [Symbol] | RAIN BIRD | MC PLUS 36 STATION CONTROLLER WITH P-25 PEDESTAL. OPERATE ONLY BETWEEN DUSK AND DAWN. | | | | | |
| [Symbol] | POC | POINT OF CONNECTION. CONFIRM LOCATIONS AT EXISTING STUB | | | | | |
| [Symbol] | WILKINS | 2" 975 XL BACKFLOW PREVENTER WITH LeMeur STAINLESS STEEL ENCLOSURE | | | | | |
| [Symbol] | RAIN BIRD | 44LRC QUICK COUPLER VALVE. PLACE IN ROUND VALVE BOX WITH LID. | | | | | |
| [Symbol] | NIBCO | T-113 BRONZE GATE VALVE, LINE SIZE. PLACE IN RECTANGULAR VALVE BOX WITH LOCKING LID | | | | | |
| [Symbol] | SENSUS | 2"-WATER METER. CONTRACTOR TO PURCHASE A METER TRANSCIVER UNIT (MXU), CITY TO INSTALL TRANSCIVER | | | | | |
| [Symbol] | | FLOW SENSOR | | | | | |
| [Symbol] | | RAIN/ WEATHER SENSOR | | | | | |

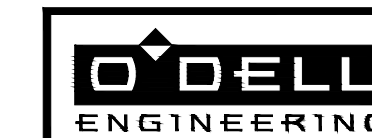
| PIPING SCHEDULE | |
|-----------------|-------------------------------------|
| [Symbol] | MAINLINE 2" SIZE CLASS 315 PVC PIPE |

NOTE: THIS DOCUMENT IS FOR CONCEPTUAL PLANNING PURPOSES ONLY. THIS DOCUMENT IS MARKED PRELIMINARY AND NOT TO BE USED FOR CONSTRUCTION PURPOSES.

PROJECT DESCRIPTION:

THE IRRIGATION DESIGN CONSISTS OF A POINT OF CONNECTION ON THE NORTH SIDE OF THE EAST ENTRANCE WITH WATER METER, FLOW SENSOR, AND BACKFLOW PREVENTER. THE MAINLINE IS LOOPED AROUND THE SITE. GATE VALVES ARE PLACED FOR MAINLINE ISOLATION. QUICK COUPLERS ARE PLACED FOR CONVENIENT ACCESS. SHRUBS WILL BE IRRIGATED WITH BUBBLERS OR SPRAY HEADS AS SHOWN ABOVE. TREES WILL BE IRRIGATED WITH RWS.

PRELIMINARY



North Walnut Townhomes
Conceptual Irrigation Plan

2017-8-25

