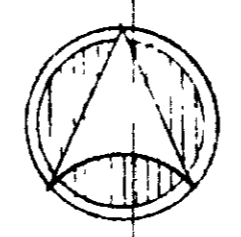
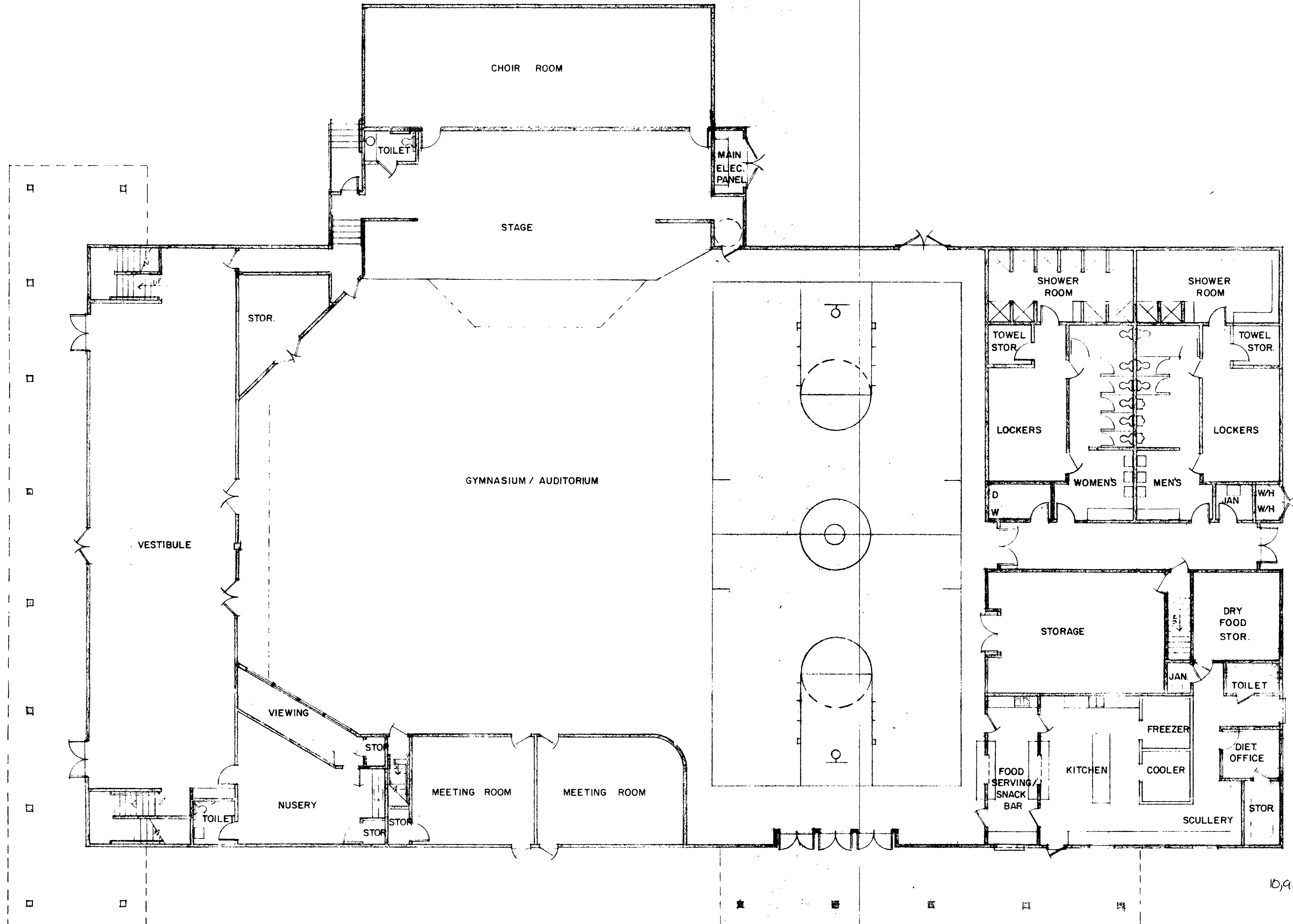


THIS AREA
SEE SHEET-L2



IRRIGATION PLAN	
SCALE: 1" = 40' - 0"	
MULTI-PURPOSE BUILDING for FIRST ASSEMBLY OF GOD CHURCH	
486 BUTTON AVE., MANTECA, CA	
edward charles merlo, a.l.a., architect 165 W. CLEVELAND STREET, STOCKTON, CALIFORNIA	
Edward Merlo 116 No. C18381	Checked by L1
Stabella Merlo 116 No. C18381	Drawn by #SPC-93-1
date 4-22-94	



GROUND FLOOR PLAN

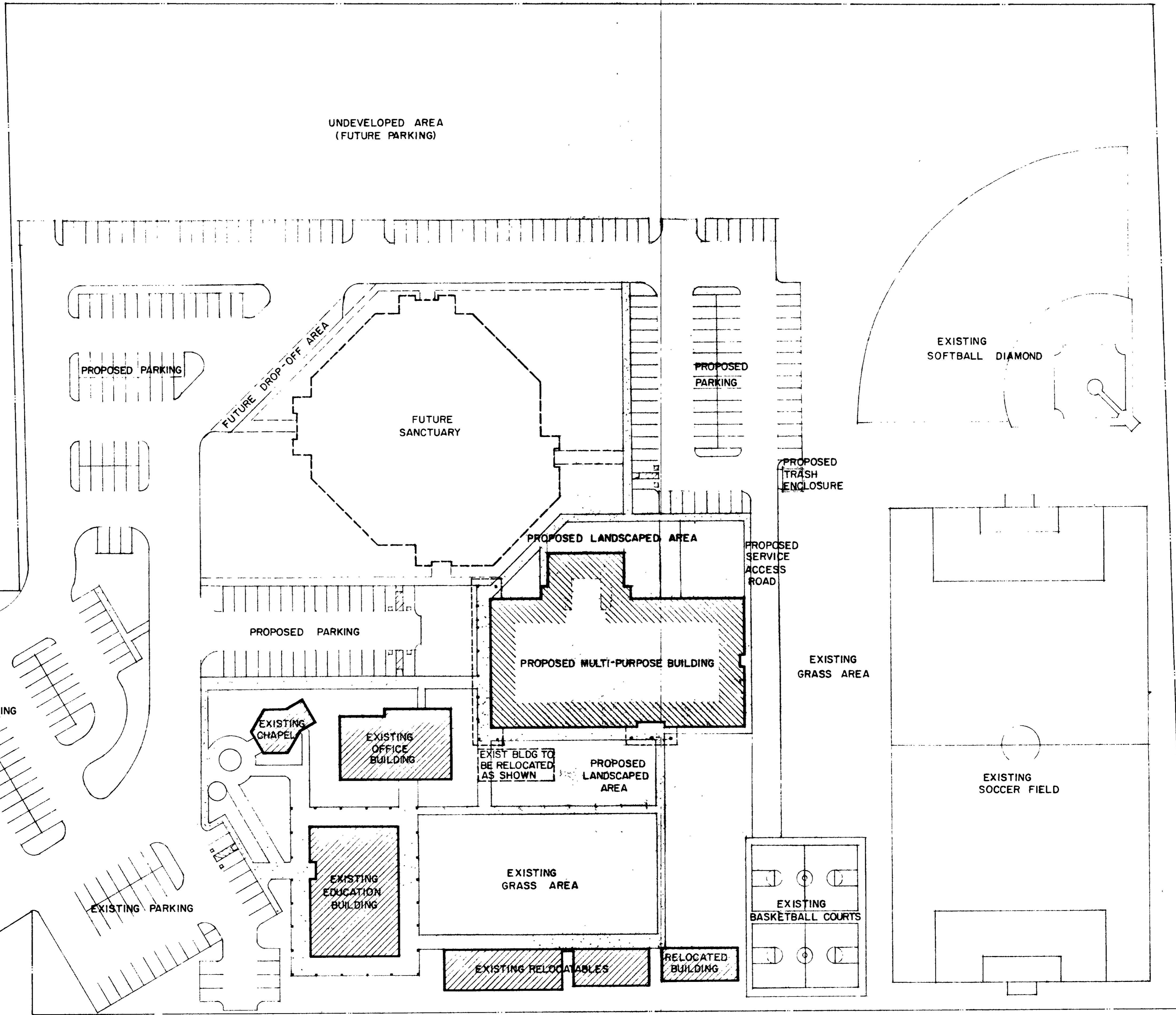
SCALE: 1/8" = 1' - 0"

Edward Merlo	lic. no. C18374	PROPOSED MULTI-PURPOSE BUILDING for FIRST ASSEMBLY of GOD CHURCH 486 BUTTON AVE., MANTECA, CA edward charles merlo, a.i.a., architect 165 W. CLEVELAND STREET, STOCKTON, CALIFORNIA	sheet
DATE	lic. no. C18361		drawn by
STANDARD	lic. no. C18374		DATE

#SPC-93-1

SITE TABULATION

PROPOSED BUILDING AREA = 21,600 SQ. FT.
 PROPOSED PARKING = 265 SPACES
 EXISTING PARKING = 39 SPACES
 TOTAL PARKING = 304 SPACES



SITE PLAN # SPC-93-1

RECEIVED
 MAR 11 1993

PLANNING DEPT.

PRELIMINARY SITE PLAN

SCALE: 1" = 40' - 0"

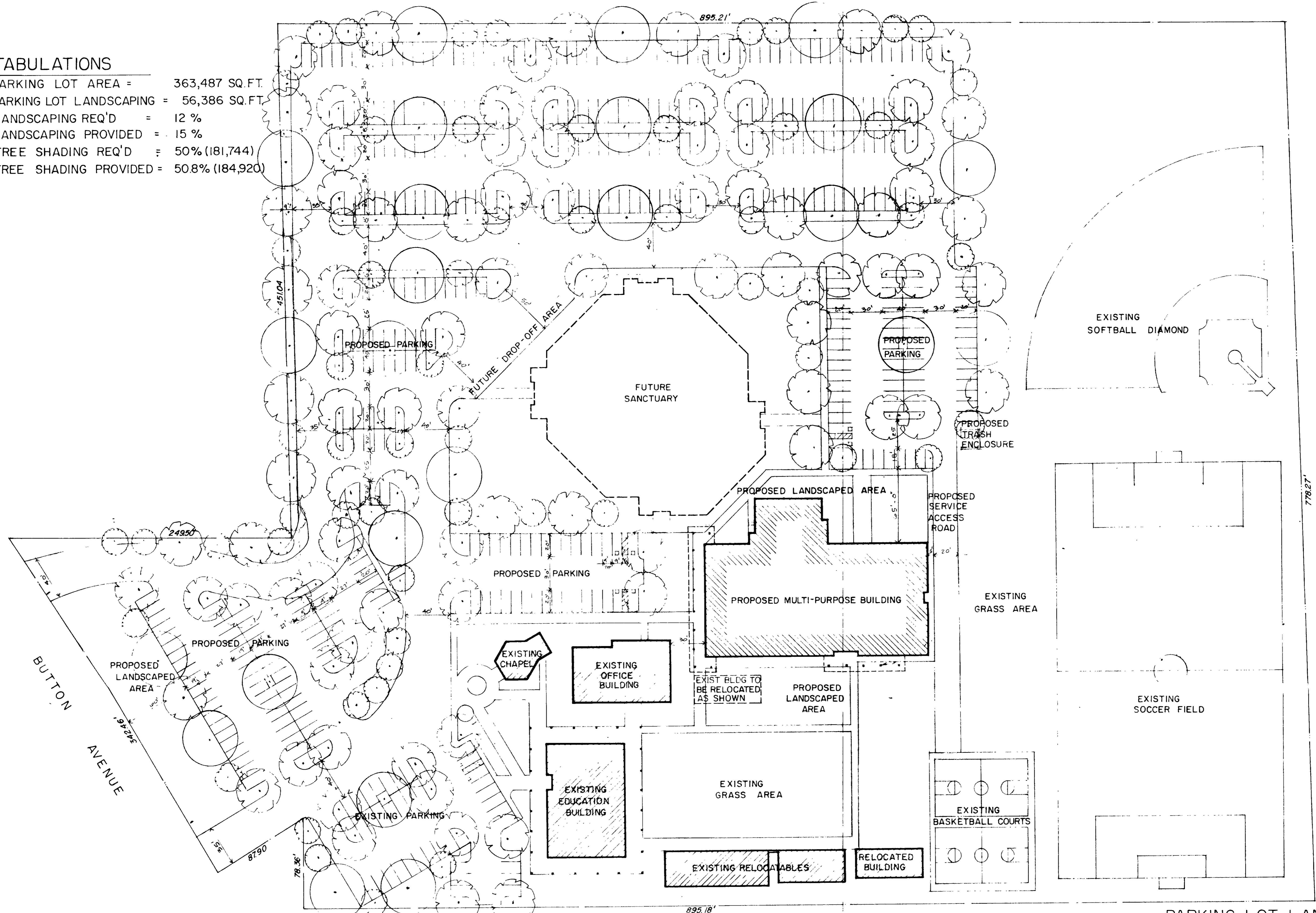
PROPOSED MULTI-PURPOSE BUILDING for
FIRST ASSEMBLY of GOD CHURCH
 486 BUTTON AVE., MANTECA, CA

edward charles merle, a.i.a., architect
 165 W. CLEVELAND STREET, STOCKTON, CALIFORNIA

EDWARD CHARLES MERLE A.I.A., ARCHITECT 165 W. CLEVELAND STREET STOCKTON, CALIFORNIA 95210 PHONE (209) 924-1111 FAX (209) 924-1112	DATE	DRAWN BY	SCALE

TABULATIONS

PARKING LOT AREA = 363,487 SQ.FT.
 PARKING LOT LANDSCAPING = 56,386 SQ.FT.
 LANDSCAPING REQ'D = 12 %
 LANDSCAPING PROVIDED = 15 %
 TREE SHADING REQ'D = 50% (181,744)
 TREE SHADING PROVIDED = 50.8% (184,920)

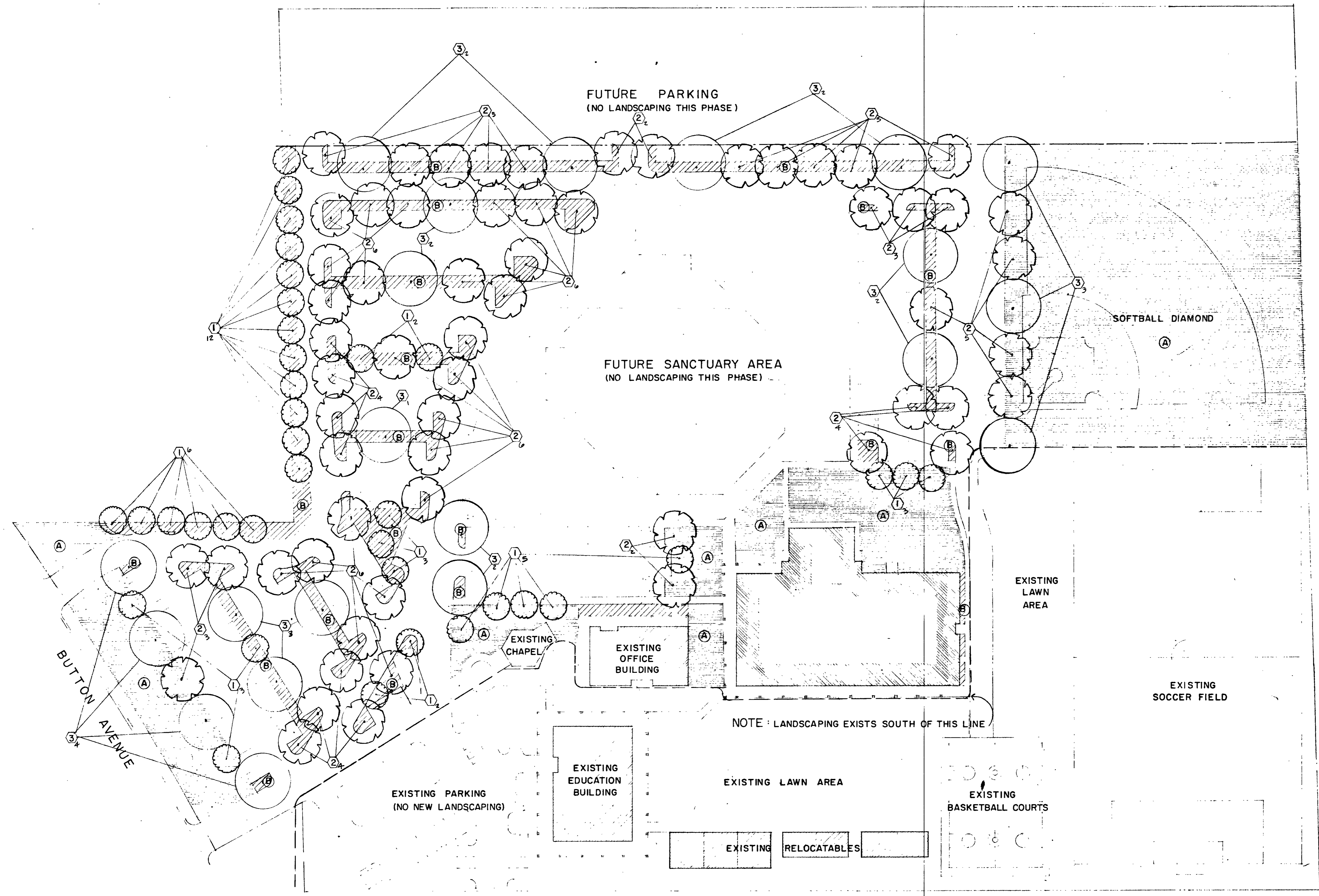


SHADING CHART

KEY	COMMON NAME	BOTANICAL NAME	FULL SIZE - 15 YEARS	AREA SHADED
○	FLOWERING PEAR	PYRUS KAWAKAMII	25' DIA. (490.9 SQ. FT.)	58 TREES= 28,472 SQ. FT.
⊗	SILK TREE	ALBIZIA JULIBRISSIN	40' DIA. (1256.6 SQ. FT.)	87 TREES= 109,324 SQ. FT.
⊙	CHINESE PISTACHE	PISTACIA CHINENSIS	50' DIA. (1963.5 SQ. FT.)	24 TREES= 47,124 SQ. FT.

PARKING LOT LANDSCAPING
 PRELIMINARY SITE PLAN
 SCALE 1" = 40' - 0"

PROPOSED MULTI-PURPOSE BUILDING for
FIRST ASSEMBLY of GOD CHURCH
 486 BUTTON AVE., MANTECA, CA
 edward charles merlo, a.l.a., architect
 165 W. CLEVELAND STREET, STOCKTON, CALIFORNIA



TREE CHART

KEY NO.	COMMON NAME	BOTANICAL NAME	FULL SIZE (15 YR.)	SIZE	QU.
1	FLOWERING PEAR-ARISTOCRAT	PYRUS CALLERYANA "ARISTOCRAT"	25' DIA. (490.9 SQ. FT.)	15 GAL.	36
2	SYCAMORE YARWOOD	PLATANUS ACERIFOLIUS	40' DIA. (1256.6 SQ. FT.)	15 GAL.	61
3	CHINESE PISTACHE	PISTACIA CHINENSIS	50' DIA. (1963.5 SQ. FT.)	15 GAL.	21

GROUND COVER CHART

KEY NO.	COMMON NAME	BOTANICAL NAME	REMARKS
A	SOD LAWN	CALTUFF PENBLUE	
B	SAND STRAWBERRY	FRAGERIA CHILOENSIS	FROM FLATS AT 12" o.c.

PLANTING PLAN

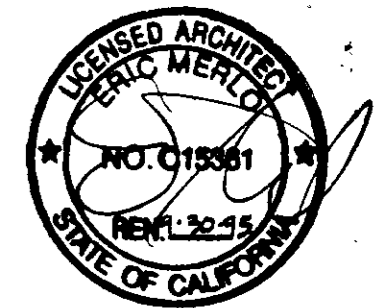
SCALE: 1" = 40' - 0"

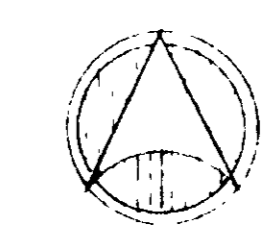
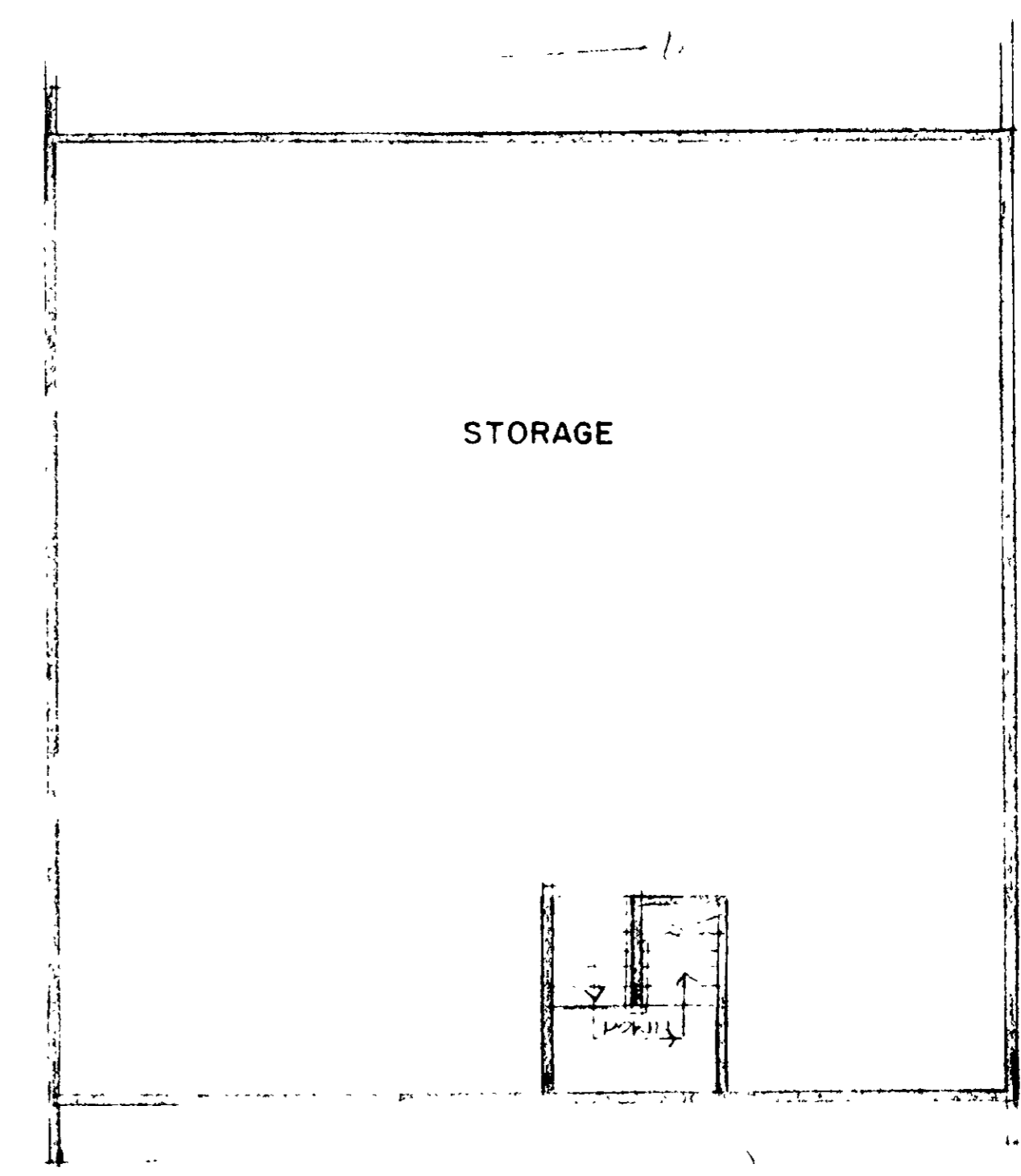
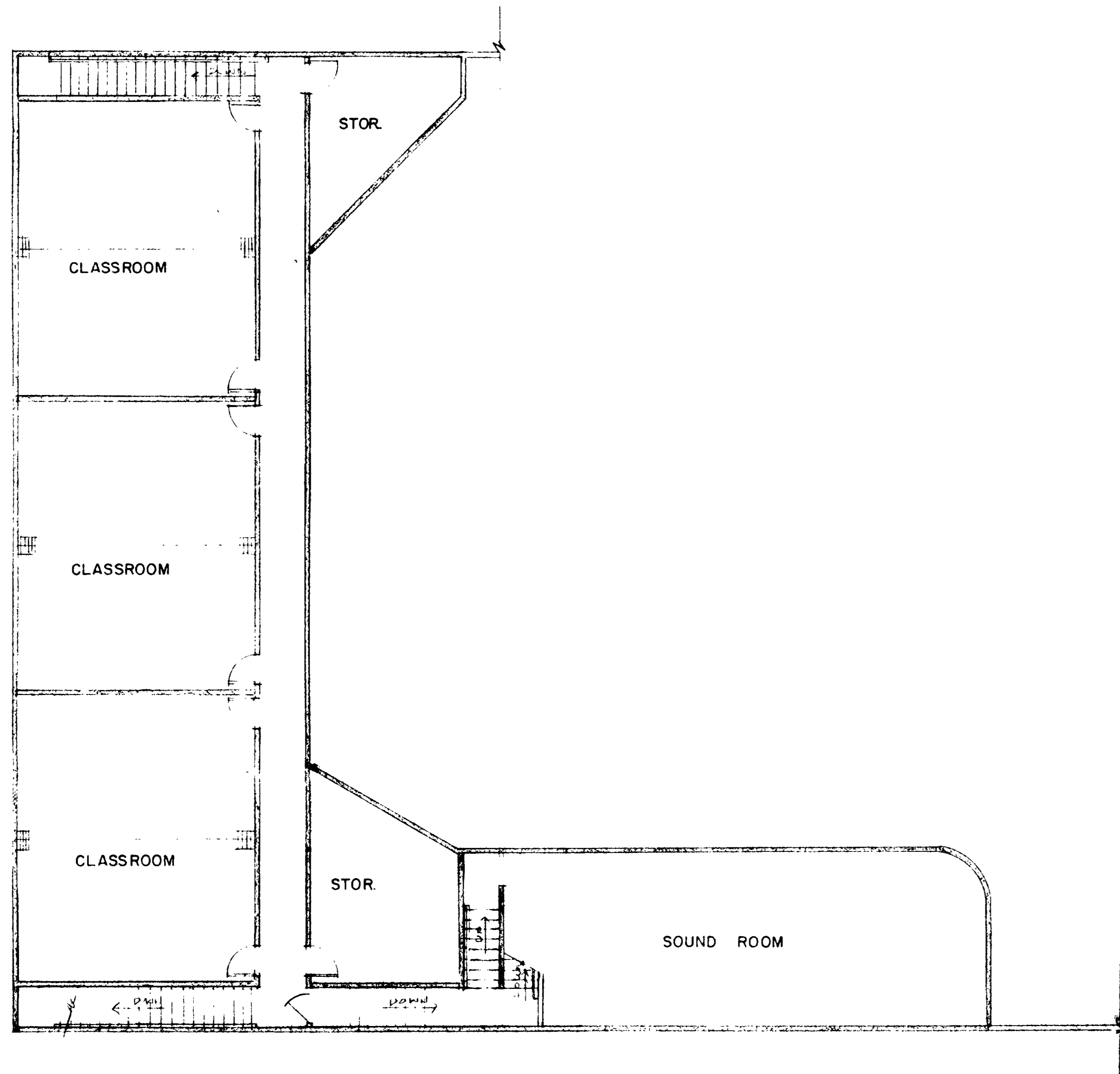
**MULTI-PURPOSE BUILDING for
FIRST ASSEMBLY OF GOD CHURCH**
486 BUTTON AVE., MANTECA, CA

edward charles merlo, a.l.a., architect
165 w. cleveland street, stockton, california

date: 4-22-94

#SP-93-1





SECOND FLOOR PLAN

SCALE: 1/8" = 1' - 0"

PROPOSED MULTI-PURPOSE BUILDING for
FIRST ASSEMBLY of GOD CHURCH
 486 BUTTON AVE., MANTECA, CA

edward merlo	TIC NO. C2874
eric merlo	TIC NO. C18361
gabriel merlo	TIC NO. C18814

edward charles merlo, a.k.a., architect
 165 W. CLEVELAND STREET, STOCKTON, CALIFORNIA

#SPC-93-1