

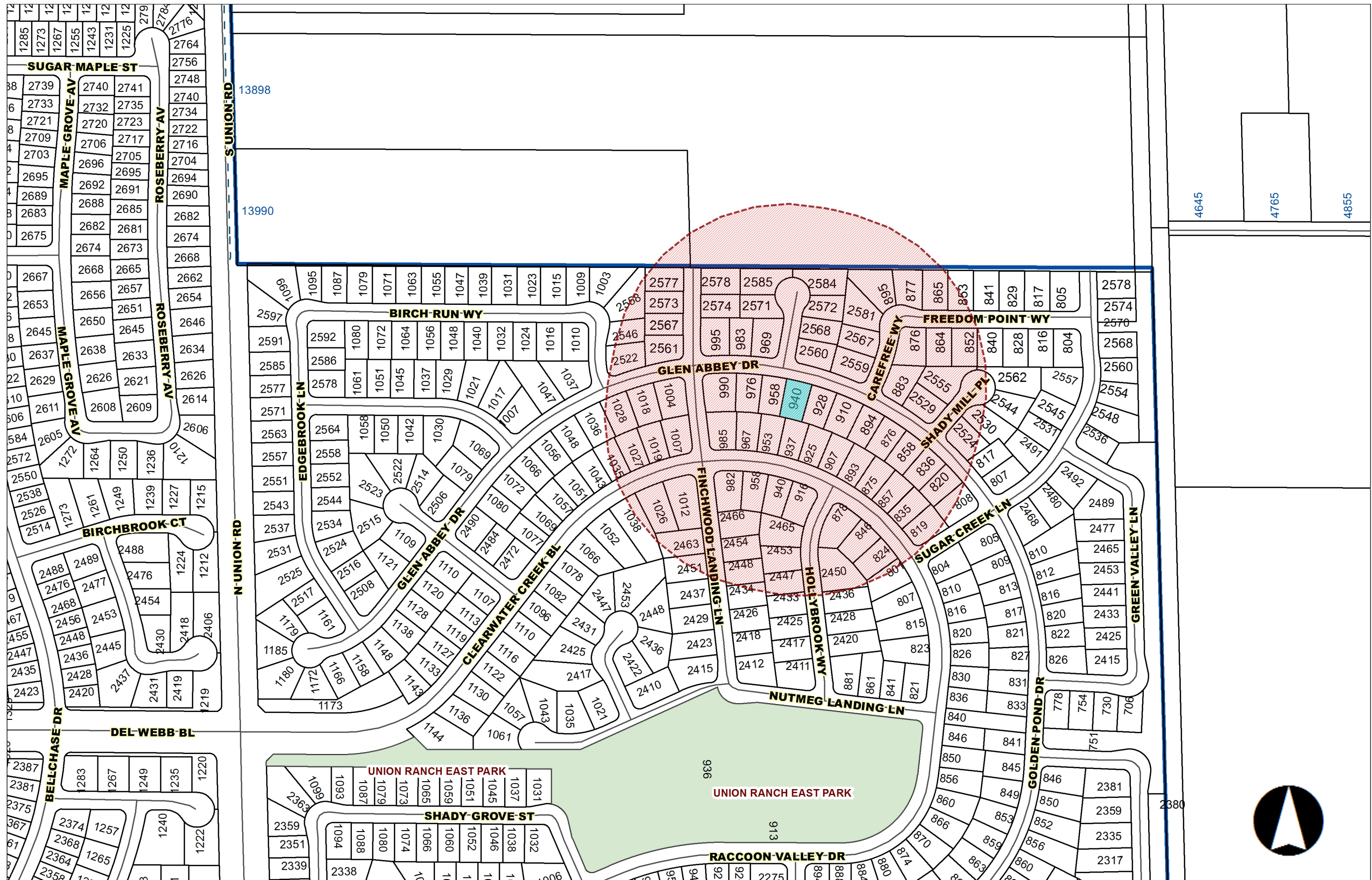


**CITY OF MANTECA, PLANNING COMMISSIONERS  
4 YEAR TERM**

	<u><b>APPOINTMENT</b></u>	<u><b>EXPIRATION</b></u>
<b>ROBERTO ALANIZ</b> 2145 Tiffany Walk Manteca, CA 95336 209-239-5133 (H) 209-468-3410 (W) <a href="mailto:roberto.alaniz@comcast.net">roberto.alaniz@comcast.net</a>	December 21, 2010	December 2018
<b>ERIC HAYES</b> 2881 Bronzan Road Manteca, CA 95337 209-823-5487 (H) 415-861-7447 X 279 (W) <a href="mailto:Yosemite_sam7@netzero.net">Yosemite_sam7@netzero.net</a>	January 1, 2002	December 2016
<b>GARY SINGH</b> 760 Randall Way Manteca, CA 95337 209-823-2105 (H) 209-612-6161(B) <a href="mailto:Singhsells@gmail.com">Singhsells@gmail.com</a>	December 16, 2014	December 2016
<b>JOSÉ NUÑO</b> 940 Glen Abbey Drive Manteca, CA 95336 209-479-3852 (H) 209-466-6811(B) <a href="mailto:joseanuno2000@yahoo.com">joseanuno2000@yahoo.com</a>	May 20, 2014	December 2018
<b>LEONARD SMITH</b> 1122 Sangria Lane Manteca, CA 95336 209-815-9160(H) 510-676-4554(C) <a href="mailto:lsmith94538@aol.com">lsmith94538@aol.com</a>	August 16, 2011	December 2018
<b><u>ALTERNATE</u></b>		
<b>JEFFREY ZELLNER</b> 2058 Solothurn Way Manteca, CA 95337 209-579-4125 <a href="mailto:JZellner@ft.Newyorklife.com">JZellner@ft.Newyorklife.com</a>	December 16, 2014	December 2016



# CITY OF MANTECA, PLANNING COMMISSIONER, JOSE NUNO 500-FOOT RADIUS MAP, 940 GLEN ABBEY DRIVE

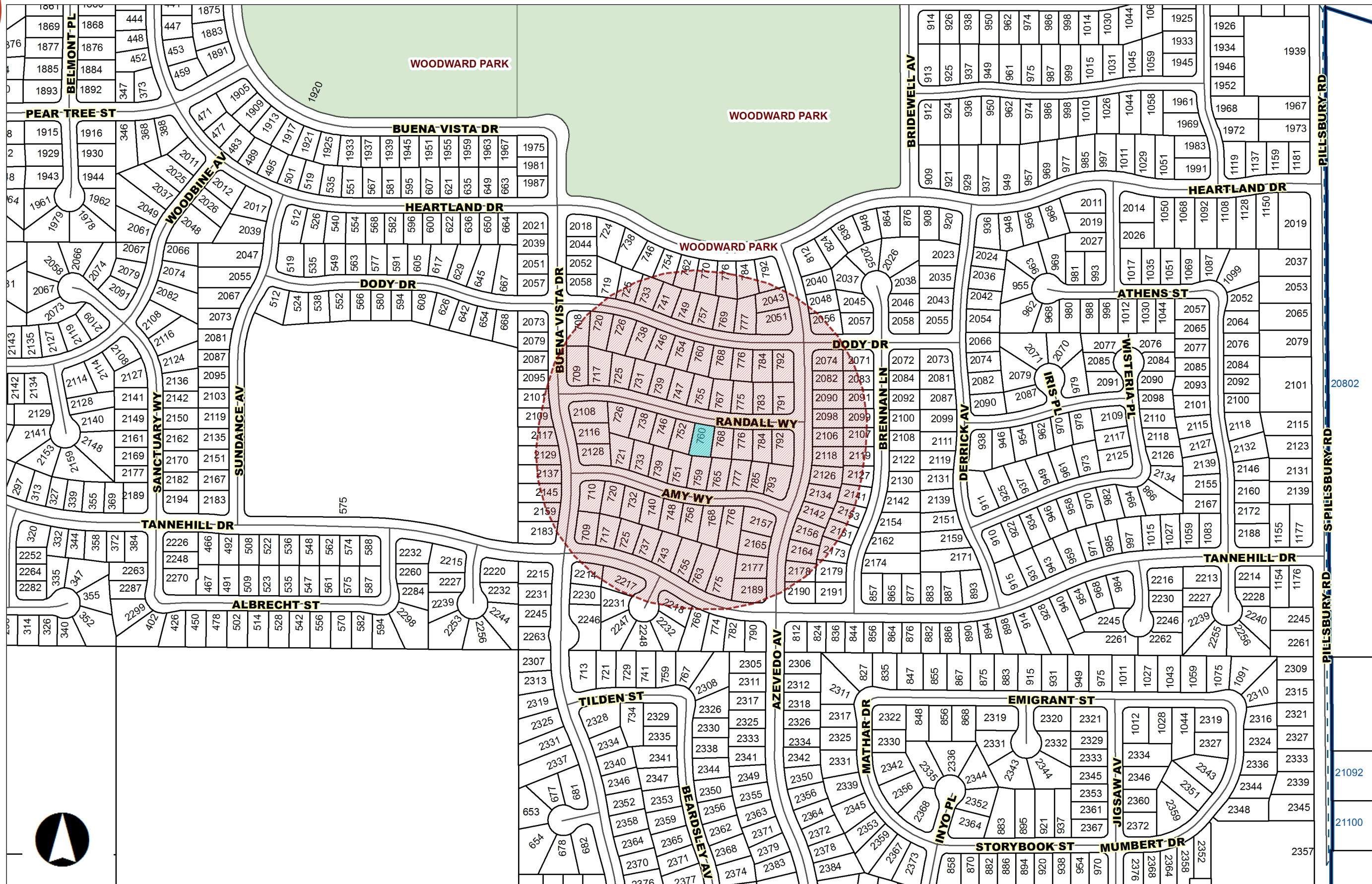


Data on this map is intended for general use and informational purposes only. The City of Manteca does not warrant the accuracy, quality, or completeness of data or suitability for any particular purpose. Information on this map is not intended to replace engineering, survey, or other primary research methods.

0.1 0 0.05 0.1 Miles



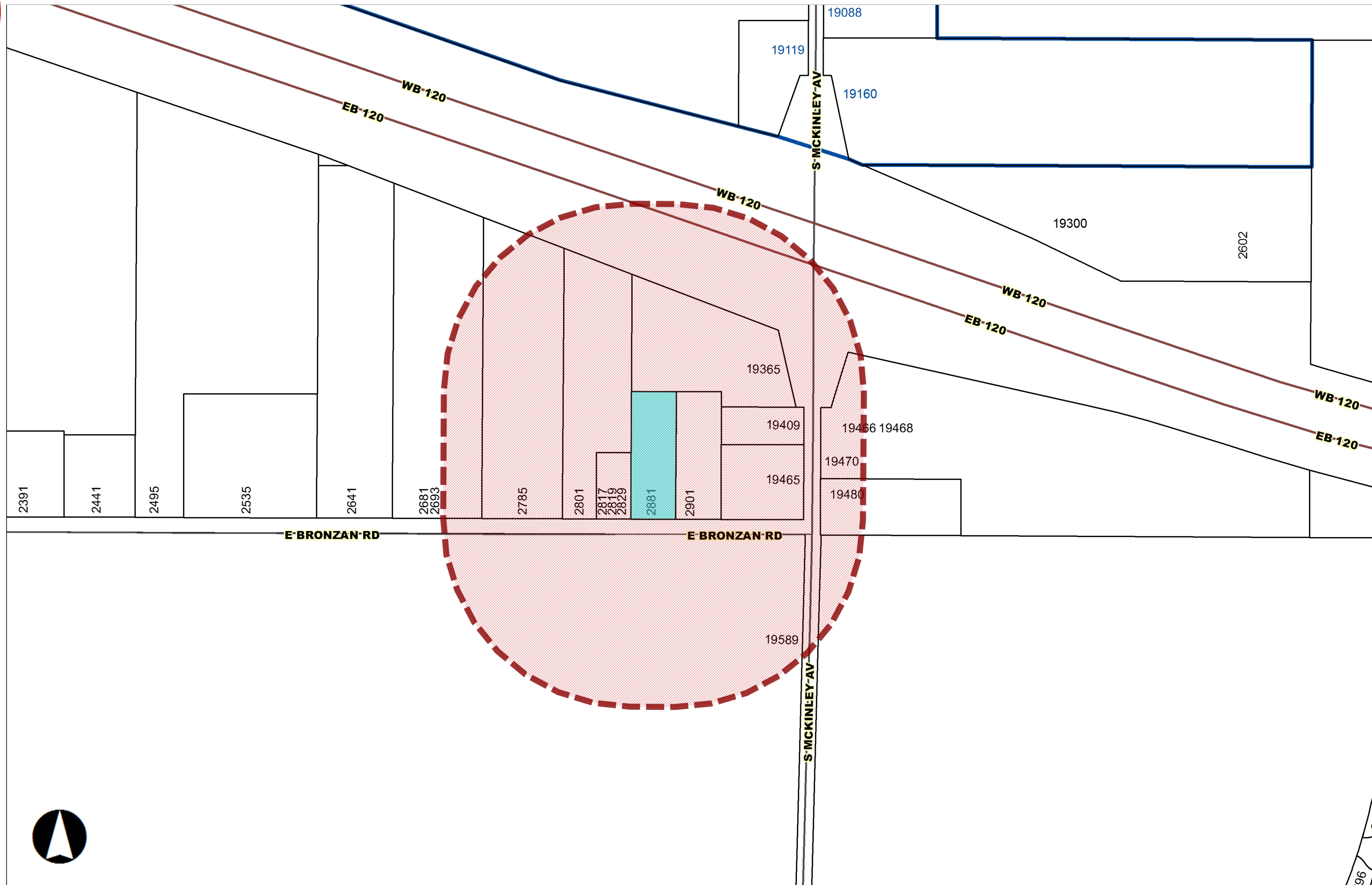
# CITY OF MANTECA, PLANNING COMMISSIONER, GURMINDER SINGH 500-FOOT RADIUS MAP, 760 RANDALL WAY



Data on this map is intended for general use and informational purposes only. The City of Manteca does not warrant the accuracy, quality, or completeness of data or suitability for any particular purpose. Information on this map is not intended to replace engineering, survey, or other primary research methods.



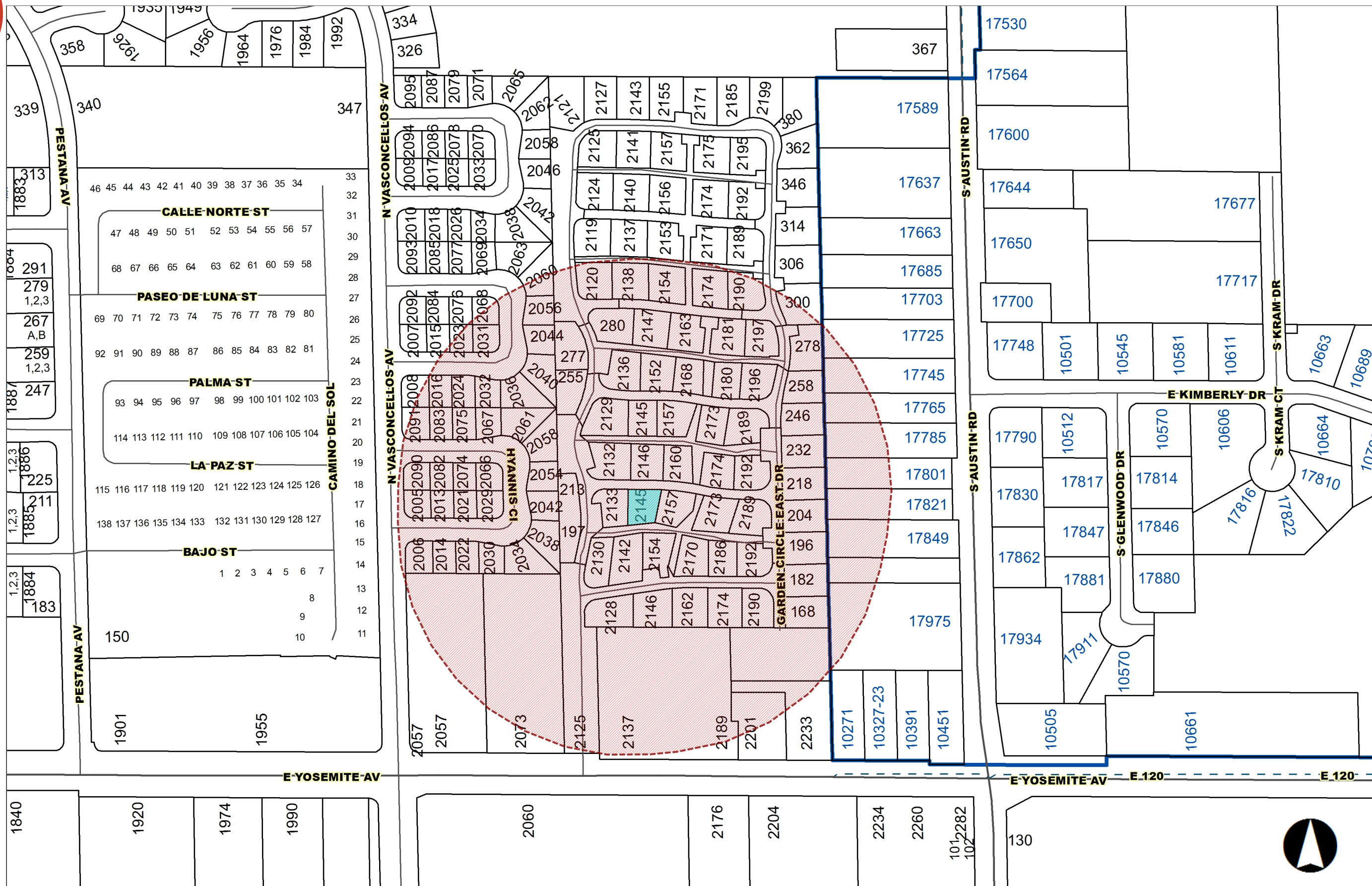
# CITY OF MANTECA, PLANNING COMMISSIONER, ERIC HAYES 500-FOOT RADIUS MAP, 2881 EAST BRONZAN ROAD



Data on this map is intended for general use and informational purposes only. The City of Manteca does not warrant the accuracy, quality, or completeness of data or suitability for any particular purpose. Information on this map is not intended to replace engineering, survey, or other primary research methods.



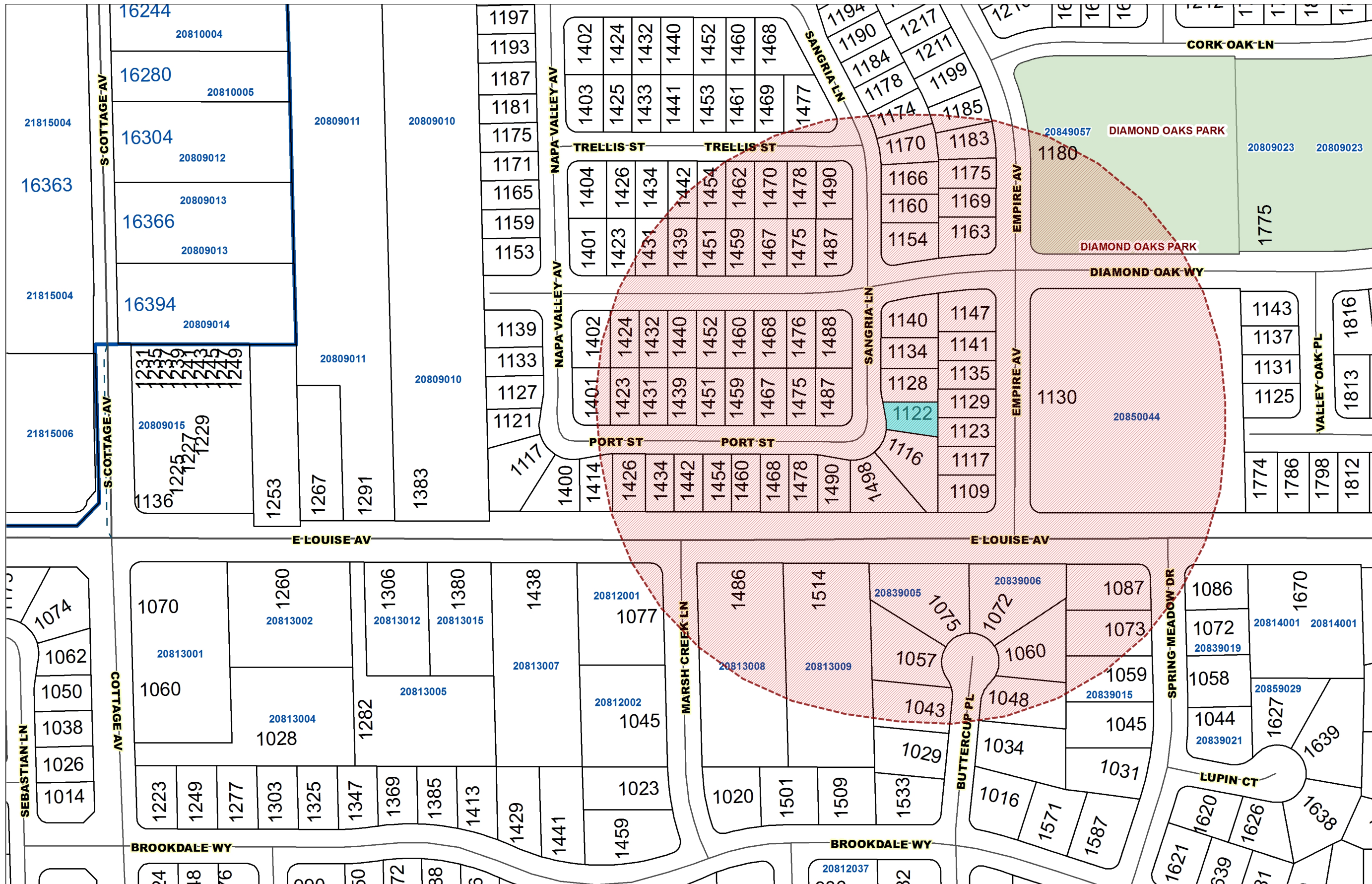
# CITY OF MANTECA, PLANNING COMMISSIONER, ROBERTO ALANIZ 500-FOOT RADIUS MAP, 2145 TIFFANY WALK



Data on this map is intended for general use and informational purposes only. The City of Manteca does not warrant or suitability for any particular purpose. Information on this map is not intended to replace engineering, survey, or other professional services.



# CITY OF MANTECA, PLANNING COMMISSIONER, LEONARD SMITH 500-FOOT RADIUS MAP, 1122 SANGRIA LANE



Data on this map is intended for general use and informational purposes only. The City of Manteca does not warrant or suitability for any particular purpose. Information on this map is not intended to replace engineering, survey, or other professional services.





# CITY OF MANTECA, PLANNING COMMISSIONER, JEFFREY ZELLNER 500-FOOT RADIUS MAP, 2058 SOLOTHURN WAY



Data on this map is intended for general use and informational purposes only. The City of Manteca does not warrant the accuracy, quality, or completeness of data or suitability for any particular purpose. Information on this map is not intended to replace engineering, survey, or other primary research methods.

