

CALIFORNIA PLANNER



American Planning Association
California Chapter

Making Great Communities Happen

Newsletter of the American Planning Association California Chapter



Summer 2012

In this issue

APA California 2012 Conference	2
President's Message	11
APA California Leadership Directory	12
APA California Election Nominations Now Open!	13
Congratulations to California's Newest Candidate AICP Members!	15
Central Coast Section Planning News	16
Statewide Parking Standards Bill Dropped for 2012	18
Legislative Update	19
Tijuana Walking Tour Allowed Planners to Experience a Rich Urban Landscape	22
Prepare Plan Preserve: CPF's Fundraising Mission	24
Planning as Play: A Fun Approach to Planning	26
Understanding Your Perspective from Behind the Dais	27
Riverside County, Building Healthier Communities	28
Sustainable Integrated Planning: Candlestick Point - Hunters Point Phase II	30
Year with No Winter: A Volunteer Planner's Experience in the Developing World - Part 2	32



APA CALIFORNIA CONFERENCE

Planning in Paradise

Over 1,000 planners and other professionals are expected to experience the amazing Coachella Valley by attending the 2012 APA California Conference October 21 - 24 at the wonderful Rancho Las Palmas Resort and Spa located in Rancho Mirage. The Conference will kick into high gear on Sunday, October 21, with Student Day, and the APA California Golf Tournament. The day will conclude with a dynamic opening reception on the 5th fairway located at the Rancho Las Palmas Country Club with local food, wine and entertainment that is not to be missed!

We have more than 90 sessions scheduled for the conference representing this year's theme – Prepare, Plan and Preserve. In addition, there are several mobile workshops scheduled throughout the four days that will provide opportunities to experience the uniqueness of the Coachella Valley and beyond. We also have dynamic keynote speakers scheduled.

Student day is Sunday, October 21, and will once again provide students the opportunity to be recognized for their achievements at the student awards luncheon, attend sessions, and showcase their work during the Student Poster Session.

This year's California Planning Foundation (CPF) silent and live auction will be conducted Monday evening, which is always a fun and lively event. We are still looking for auction donations – don't forget that the CPF auction supports student scholarships for California's planning students. We hope that you can contribute by donation, purchase or both in help making this year's auction the best ever!

The APA California Golf Tournament will be an exciting and fun time for all with fun prizes and the chance to win a car for a hole in one. The fees are affordable and a portion of the Tournament proceeds go to CPF.

We hope that you are able to join us this year for what will certainly be an amazing, exciting and unforgettable Conference! Early registration is now available on the APA California website at www.APACalifornia.com.



**APA California Election
Nominations Now Open!**
See page 13

Cal Planner Production Schedule

Issue	Submit Articles	Issue E-mailed*
Fall 2012	September 1	October 1
Winter 2013	December 1	January 1

Dates subject to change. *Issue will be sent by eblast during this week. For article and photo specifications, display and call card information, please check out the website at www.apacalifornia.com.

REGISTER ONLINE AT www.APACalifornia.org

Mobile Workshops

The Annenberg Retreat at Sunnylands – Founded by Ambassador Walter and Leonore Annenberg, Sunnylands is a 200-acre estate and historic residence repurposed as a West Coast “Camp David” where national and international leaders convene to “promote world peace and facilitate international agreement.” Our tour will include the 17,000 square foot Sunnylands Center & Gardens. Here you will see sculpture from the Sunnylands Collection and walk through the arid-landscape gardens of more than 53,000 individual plants and 50 species to the historic Annenberg Estate. Sunnylands Center & Gardens has a LEED Gold rating and interactive kiosks in the Center tell that story.

Marine Corps Air Ground Combat Center – The Marine Corps Air Ground Combat Center in Twentynine Palms encompasses 935 square miles and was established in 1952 as the Marine Corps’ premier full-time, live-fire training facility. Our visit will include a look at the infrastructure that supports the equivalent of a small city, the base’s alternative energy sites and recycling center, and a viewing of urban warfare training sites (“The Little Iraqi Villages”). We will explore the new challenges faced by the military as surrounding communities grow closer to the edges of the base.

Palm Springs Aerial Tramway – With a history that dates to 1935, the Palm Springs Aerial Tramway is an engineering marvel that provides access to the Santa Rosa and San Jacinto Mountains National Monument and the Mt. San Jacinto State Park. The rotating tram cars ascend and descend via a cable that is two and one-half miles long and weighs twenty-two tons. Our visit will include a ride to the summit station (8,500 ft elev.) and a tour of the installation and machinery. The environmental challenges of constructing and maintaining the tram, as well as the touristic aspects of its operation will be explored.

Tram admissions sponsored by the Palm Springs Aerial Tramway

Desert Water Agency Facilities – How is the “Source of Life” provided to a region that has 350 days of sun each year? How are local water supplies related to the state’s massive water system? Find out with this tour of the Desert Water Agency’s water delivery system. We will visit a Colorado Aqueduct turn-out, an aquifer spreading basin, and the infrastructure that make up the system. See how hydro-electric, solar and wind power are integral to water service; take a look at the future of recycled water; and learn how water agencies prepare for earthquakes and other emergencies.

Tour sponsored by the Desert Water Agency

SunLine Transit Headquarters - SunLine Transit Agency is a joint powers authority that operates the Coachella Valley’s public transportation system. Its fleet of 69 fixed route buses travel more than 2.75 million miles per year, carrying over 4 million passengers between 515 bus stops located throughout a 1,120 mile-service area. Our tour of SunLine’s headquarters will include a presentation on the agency’s transit planning efforts, the challenges of operating public transit in a low-density suburban setting, and the history of SunLine’s environmental stewardship, including its newest acquisition – one of the first new-generation, American-made fuel-cell buses in the nation.

Wind Machines – As an alternative energy source, wind-generated power has matured significantly from its early days in the 1980’s, and the wind corridor north of Palm Springs has been part of the industry since the beginning. On this tour, participants will walk among the wind turbines themselves, including the latest 1.65 megawatt machines. Local wind energy companies will be on hand to discuss the future of the industry, including experimental designs, the latest environmental issues and plans to develop solar energy production among the wind machines.

Tour sponsored by Wintec Energy, Ltd

Continued on page 3

Keynote Speaker - Richard J. Jackson



Richard J Jackson is Professor and Chair of Environmental Health Sciences at the Fielding School of Public Health at the University of California, Los Angeles. A pediatrician, he has served in many leadership positions in both environmental health and infectious disease with the California Health Department, including the highest, State Health Officer. For nine years he was Director of the CDC’s National Center for Environmental Health in Atlanta and received the Presidential Distinguished Service award. In October 2011 he was elected to the Institute of Medicine of the National Academy of Sciences.

In California he has helped establish the California Birth Defects Monitoring Program and state and national laws to reduce risks from pesticides, especially to farm workers and to children. While at CDC he established the national asthma epidemiology and control program, oversaw the childhood lead poisoning prevention program, and instituted the federal effort to “biomonitor” chemical levels in the US population. In the late 1990s he was the CDC leader in establishing the US National Pharmaceutical Stockpile to prepare for terrorism and other disasters—which was activated on September 11, 2001. He has received the Breast Cancer Fund’s Hero Award, as well as Lifetime Achievement Awards from the Public Health Law Association, and the New Partners for Smart Growth.

Dick Jackson will bring an important if not essential perspective that asks planners to look at urban systems in a more holistic way. He regularly lectures and speaks on many issues of interest to planners, particularly those related to the built environment and health. He co-authored two Island Press Books: *Urban Sprawl and Public Health* in 2004 and *Making Healthy Places* in 2011. He is host of a 2012 public television series *Designing Healthy Communities*, which links to the J Wiley & Sons book by the same name published in October 2011. He has served on many environmental and health boards, as well as the Board of Directors of the American Institute of Architects. He is married to Joan Guilford Jackson; they have three grown children and one grandchild.

Dr. Jackson’s speech will highlight how we design the built environment, and its potential for addressing and preventing many of the nation’s devastating childhood and adult health concerns, and the quality of life in our communities. He will address the root causes of our malaise and will highlight healthy community designs achieved by planners, designers, health professions, and community leaders working together. Dr. Jackson’s goal will be to encourage all of us to make the kinds of positive changes that will transform our communities and us.

Mobile Workshops

Performance Venue (“The Show”) – Native American tribes have had a major impact on the local economy by bringing gaming and entertainment to the Coachella Valley. One of the most advanced local entertainment facilities is “The Show” – a 2000-seat performing arts venue attached to the Agua Caliente Casino Resort Spa in Rancho Mirage. Our tour will explore the theater, including back-of-house infrastructure, and incorporate a discussion of the operational and marketing challenges of performing arts centers in a low-density, suburban context.

Historic Properties – Historic preservation in the Coachella Valley is uniquely defined by architects who practiced in the desert during the mid-twentieth century and left behind a collection of first-rate modern commercial and residential buildings. This tour will visit several of the notable mid-century modern banks, hotels, retail centers, office buildings, and homes located in Palm Springs, Rancho Mirage and Palm Desert. Local preservation experts will discuss the mid-century modern movement and the political and economic challenges of preserving significant “young” buildings.

Farm Operation – Food, clothing and shelter are the three requisites for human life. Planners are directly involved with the last of these, but what about food? There are significant land use and environmental issues associated with agriculture and food production that every planner should know. This tour will leave the urban and suburban world behind and explore farming operations located at the southern end of the Coachella Valley. Local farmers will present their perspectives on California farming in the twenty-first century. We will stop at the world-famous Shields Date Farm on our return.

Affordable Housing – Affordable housing continues to explore design features and operational methods that provide improved residential living conditions as well as long-term financial viability. On this tour, we will visit some of the recent residential projects developed for low and moderate income families in Indio, La Quinta, and Palm Desert. Housing staff from these cities will describe the design, construction and administrative challenges of affordable housing in the Coachella Valley, and share their perspectives on the future of RDA-sponsored housing.

Palm Springs International Airport – As the only commercial airport serving Riverside County, Palm Springs International Airport is a transportation utility and key economic engine, serving over 1.5 million travelers each year from over 500 cities worldwide. The presentation will be conducted by the Airport Executive Director who will discuss air traffic operations, airport master planning, regulatory requirements, land use compatibility and noise abatement, maintenance and security, and emergency preparedness. Attendees will learn about the airport’s impact on the City’s overall functionality - from vehicular traffic and economic development to utility consumption, landscaping and building architecture.

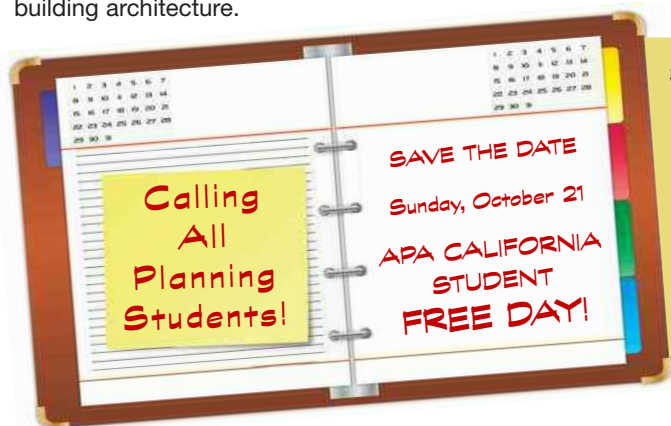
Keynote Speaker - Joel Reynolds, JD



Mr. Reynolds is the Director of the Marine Mammal Protection and Southern California Ecosystem Projects, Urban Program at the Natural Resources Defense Council. He graduated in 1978 from Columbia Law School, where he was a Harlan Fiske Stone Scholar and winner of the Convers Prize. After law school, he clerked for United States District Judge John R. Bartels in the Eastern District of New York. Since 1980, he has specialized in complex law reform litigation and argued cases on behalf of environmental and community organizations at all levels of the federal courts, including the U.S. Supreme Court. Currently, he specializes in issues of coastal protection, land use, marine mammal protection, environmental justice, and transportation. His areas of expertise also include environmental law, coastal protection, land use, marine mammal protection, environmental justice, transportation and nuclear power.

Directing NRDC’s urban program and its marine mammal protection and Southern California ecosystem projects based in Santa Monica, he has litigated on behalf of endangered whale populations around the world in order to establish policies for their protection, campaigned to protect rivers and wild salmon fisheries in Alaska, and negotiated landmark land conservation agreements in California. He has twice been recognized by California Lawyer Magazine as California Lawyer of the Year in the environmental category, first in 2003 and again in 2008.

Mr. Reynolds will speak to some of the major issues that face planners today, especially those in California and the west, including urban sprawl, competing transportation schemes and the emerging rediscovery of the city environment and its design needs. He will also speak to the importance of social/environmental justice and how essential urban infrastructure, such as diverse and accessible transportation systems, can directly strengthen the local economic fabric and optimizing the environment for social, education and economic upward mobility.



Sunday is your day at the 2012 California Planning Conference. Students attending this free day will have the opportunity to hear from seasoned planning professionals and recognize the 2012 California Planning Foundation Award Winners at the Student Awards Luncheon.

This year there will be three student sessions that will cover topics relevant to students and young professionals. Please plan to come for the day, or stay for the whole conference! Students that wish to attend the FREE day or the entire conference will need to register on the APA California website. Students attending the full conference pay just half of the full registration fee.

REGISTER ONLINE AT www.APACalifornia.org



APA California Golf Tournament

October 21, 2012

Rancho Las Palmas Golf Resort



Valley for players of *all* skill levels. Gently rolling hills, palm tree-lined fairways, and sweeping mountain vistas provide an excellent backdrop for enjoying the game without leaving the grounds of the Conference facility.

The 4-person scramble format and wide fairways make this a very player-friendly course. For those who like a challenge, test your skills and win one of several competitions, including "closest to the pin" and "long-drive" contests. One lucky player may go home with a new car if they are able to master a "hole in one."

Kick-off the Conference and meet new friends with a fun and stress-free round of golf at the Rancho Las Palmas Resort Course on **Sunday, October 21**. This Ted Robinson-designed course is widely regarded as one of the best in the Coachella

The cost to play is only **\$79.00**, including cart and range balls. A portion of the proceeds will go to the California Planning Foundation in support of planning education scholarships. A limited number of rental clubs are available for an additional \$65.00.

Registration begins at 1:00 pm, with a shotgun start at 1:30 pm – leaving plenty of time to arrive at the conference site as well as attend the evening's Opening Reception. For an enjoyable way to begin your stay in the Coachella Valley, sign up for the tournament with your conference registration – it's sure to fill up fast.

Do you love golf, but are not able to play? Tournament sponsorship opportunities are still available ranging from \$100 to \$1000. This is another great way to advertise your company and/or products to members of the American Planning Association, California Chapter.

For more information on registration and sponsorships, please visit CalAPA.org or contact Lynne Bynder at lbynder@meetingsxceptional.com.

Players will have an opportunity to **WIN a FREE CAR** for a Hole in One

STATE CONFERENCE SPONSORSHIPS STILL AVAILABLE

Your firm or agency can be a sponsor of the 2012 APA California Conference to be held in beautiful Rancho Mirage on Oct 21 - 24, 2012. The theme of our conference this year is Prepare, Plan, Preserve.

Prepare: Are you prepared for the business opportunities that will arise with the improving economic climate?

Plan: Is your business planning to expand or diversify? Talk with the customers who are the most likely to need your service to set the stage for future RFPs and projects.

Preserve: Are you preserving your firm's place in the minds of your clients? Is your brand front and center with potential clients?

This annual conference draws over 1,000 professional planners from the public and private sectors to expand their knowledge base, network with colleagues and meet firms and organizations that are ready to "Prepare, Plan, Preserve" communities throughout California.

This is a fantastic opportunity and a cost effective way to promote your product or service directly to the consumer who uses it. The Conference is also a terrific opportunity to engage and network with planners that approve development projects, seek proposals for services and make recommendations for hiring.

We hope you will join us in Rancho Mirage in 2012! Just fill out the form at www.APACalifornia.com or email Lynne C. Bynder at lbynder@meetingsxceptional.com to discuss how your firm can be assured the best space possible at the Conference.

APA California Conference App

Introduced for the first time at the 2011 Conference, the APA California Conference App will make a return for this year's conference. Many of those attending last year's conference had nothing but positive feedback regarding the App.

The Conference Mobile App will allow you to access conference information at your fingertips, and save lots of paper in the process. Conference site maps, program schedules, speaker biographies, last minute venue changes, nearby restaurants and attractionsall this and more will be accessible on your PDA or smart phone at no cost to you.



Mobile App Sponsored by:
Benchmark Resources, Dudek, Willdan

REGISTER ONLINE AT www.APACalifornia.org



2012 APA California Chapter Conference

CONFERENCE-AT-A-GLANCE



SUNDAY, OCTOBER 21

8:30 - 10:00 am	Student Registration
10:00 - 11:30 am	Stories from the ¡Tijuana! CPF Walking Tour - CM 1.5
11:45 am - 1:00 pm	Student Awards Lunch (students only)
12:00 noon - 6:00 pm	Conference Attendee Registration
12:00 noon - 6:00 pm	Exhibitor Set-up
1:00 - 5:00 pm	APA California Golf Tournament
1:15 - 2:45 pm	Show Me the Money: Salary Negotiations for Planners (CPF Session)
3:00 - 4:30 pm	Charting a Career in Sustainability: Steps Students Can Take Before Graduating
4:30 - 6:00 pm	Census Trends for Planning & Policy: Diversity Summit 2012 - CM 1.5 ETHICS
6:30 - 10:00 pm	Opening Reception

Census Trends for Planning & Policy: Diversity Summit 2012

This year's California Chapter Diversity Summit in Rancho Mirage will deepen planners' understanding of statewide demographic trends to inform local land use planning and public policy, with particular emphasis on underserved communities, communities of color, and the planners who work in those communities. The Summit keynote will be provided by Dr. Leobardo Estrada, PhD, Associate Professor of Urban Planning at the UCLA School of Public Affairs, Department of Urban Planning. This year's presentation will build on last year's Summit, where Hans Johnson from the Public Policy Institute of California shared preliminary Census analysis, but will go deeper into practical applications for local and regional planners. There will also be an opportunity for audience participation after Dr. Estrada's presentation, as we all reflect on his presentation and ask questions. The session will take place on the Conference opening day, Sunday, October 21 from 4:30 - 6:00 pm.

Dr. Estrada is a faculty member in Urban Planning at UCLA's Luskin School of Public Affairs. Professor Estrada's areas of expertise include ethnic and racial demographic trends, particularly of the Latino population of the U.S., inner city redevelopment, social policy analysis and research methods including Geographic Information Systems. Dr. Estrada has been asked to provide his expertise related to ethnic and racial groups twice to the U.S. Bureau of the Census, serving as Special Assistant to the Chief of the Population Division and as Staff Assistant to the Deputy

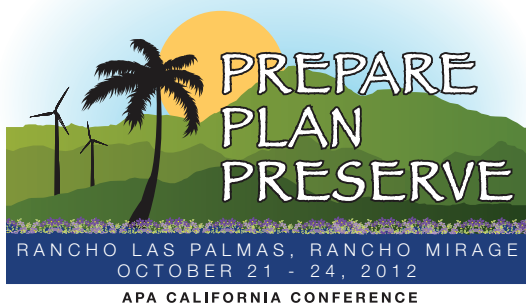
Director. He also served as a technical advisor to the National Center on Health Statistics, Bureau of Transportation Statistics, and Aspen Institute. In recognition of his expertise, Dr. Estrada has served on advisory boards to numerous non-profit organizations including the Pew Charitable Trust's Global Stewardship Initiative, The Center for the Study of the American Electorate, the Southern California Association of Governments and Los Angeles World Airports. He has served as a board member of New Economics for Women, The California Endowment, National Association of Childcare Resource and Referral Agencies, Hispanics in Philanthropy and the national board of AARP. He also has been a consultant to foundations and many private sector companies. Dr. Estrada received his B.A from Baylor University and his M.S. and PhD from Florida State University.

After the presentation and audience discussion, State Membership Inclusion Directors Connie Malloy and Anna Vidal will provide an overview of current Chapter diversity priorities, along with opportunities for members to engage in those initiatives. Please join us as we explore how emerging census information will guide our planning focus for the next decade.

Connie Malloy & Anna Vidal serve as Membership Inclusion Co-Directors for APA's California Section. For more information regarding this event, please contact connie@urbanhabitat.org, or Anna.Vidal@lacity.org.

For more information visit www.APACalifornia.com

Continued on page 6



2012 APA California Chapter Conference

CONFERENCE-AT-A-GLANCE

AICP Certification Credits
 CM credit approval is pending for these sessions.

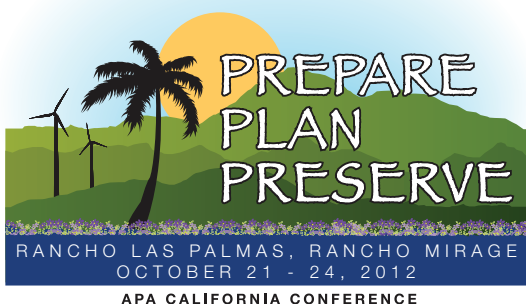
MCLE Certification Credits
 1.5 hours participatory
 MCLE credits pending.

MONDAY, OCTOBER 22

7:30 - 8:30 am	Continental Breakfast
7:30 - 6:30 pm	Conference Registration
7:30 am - 8:30 pm	Exhibits Open
8:30 am - 12:00 noon	MW#1 - Desert Water Agency Facilities - CM 2.0
8:30 am - 12:00 noon	MW#2 - Farming and Land Use
8:45 - 9:45 am	Opening Keynote Speaker - <i>Richard J. Jackson, M.D., M.P.H., Professor and Chair, Environmental Health Sciences, University of California, Los Angeles, School of Public Health</i> - CM 1.5
10:00 - 11:30 am	Session Block #1
	The Rise of the "Greenprint:" They Don't All Have To Be "Blue" - CM 1.5
	Planning for Wildfire Hazard Reduction in the Wildland Urban Interface - CM 1.5
	Elevating Design Through Public Involvement and Politics: Is it Possible? - CM 1.5
	Parking for Affordable Housing: Getting the Requirements Right - CM 1.5
	Resource Issues for Indian Reservations and Surrounding Communities - CM 1.5 LAW and MCLE 1.5
	Can You Hear Me Now?: Turning Your Mobile Device into a GIS Editor - CM 1.5
	The Planner's Role in Preparing for Disasters - CM 1.5
	The General Plan and General Plan EIR: Friends or Foes? - CM 1.5
	Legacy, Fringe, and Island Communities; Models for Infrastructure Improvements - CM 1.5 LAW and MCLE 1.5
11:45 am - 1:00 pm	Awards Luncheon
1:15 - 2:45 pm	Session Block #2
	APA California 2012 Legislative Update - CM 1.5 LAW and MCLE 1.5
	Planning Commissioner Workshop - Part 1 - CM 1.5
	Smart Growth Comes to the San Joaquin Valley - CM 1.5
	Mall Magic: Transforming Shopping Malls in Smart Growth Centers - CM 1.5
	Incremental TOD Strategies: Downtown Petaluma SMART Station Area Plan - CM 1.5
	Complete Streets: From Policy to Pavement - CM 1.5
	Reinventing Redevelopment: To Be or Not To Be - CM 1.5 LAW and MCLE 1.5
	Achieving Real Behavioral Change Through Sustainability Policy - CM 1.5
	How to Be a Better Supervisor and Work Well with Others - CM 1.5 ETHICS
1:15 - 4:00 pm	MW#3 - SunLine Transit Headquarters - CM 2.0
1:15 - 4:00 pm	MW#4 - Performance Venue "The Show" - CM 2.0
2:45 - 3:15 pm	Afternoon Break - CPF Silent Auction Opens

For more information visit www.APACalifornia.com

NOTE: All required APA California leadership meeting dates and times to be determined.
 The Conference-at-a-Glance is subject to change.



2012 APA California Chapter Conference

CONFERENCE-AT-A-GLANCE

AICP Certification Credits
 CM credit approval is pending for these sessions.

MCLE Certification Credits
 1.5 hours participatory
 MCLE credits pending.

MONDAY, OCTOBER 22

3:15 - 4:45 pm	Session Block #3
	The 3R's of Sustainable General Plans: Relevant, Reality-Based, and Ready for Implementation - CM 1.5
	Planning Commissioner Workshop - Part 2 - CM 1.5
	Historic Preservation 101: Preparing, Planning and Preserving for 2012 and Beyond - CM 1.5 LAW and MCLE 1.5
	Measuring Community Performance- Community Indicator and Benchmarking Initiatives - CM 1.5
	Using LEED & Sustainability Rating Systems to Improve Projects & Streamline NEPA/CEQA - CM 1.5
	CEQA Mitigation Measures for Renewable Energy Projects: From Paper to Implementation - CM 1.5
	The 3 R's of Sustainable General Plans: Relevant, Reality-Based, and Ready for Implementation - CM 1.5
	What's Next?: Funding, Implementing, and Monitoring your Climate Action Plan - CM 1.5
	Airport Land Use Compatibility Planning - New State Guidance and Case Study of GIS-Tool - CM 1.5
	Planning for Healthy Communities in Los Angeles County - CM 1.5
5:15 - 8:15 pm	California Planning Foundation (CPF) Reception and Silent/Live Auction CPF Reception - Silent Auction closes at 7:00 pm Live Auction Begins at 7:30 pm

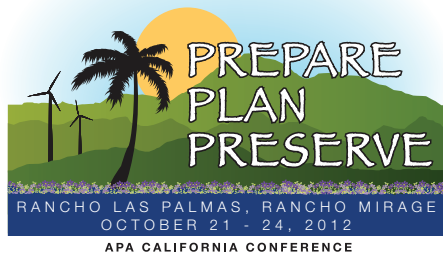
TUESDAY, OCTOBER 23

7:30 - 8:30 am	Continental Breakfast
7:30 - 6:30 pm	Conference Registration
7:30 am - 8:30 pm	Exhibits Open
8:00 am - 5:00 pm	MW#5 - Marine Corps Air Ground Combat Center - CM 6.0
8:30 am - 12:00 noon	MW#6 - Sunnylands Center at the Annenberg Estate - CM 2.0
8:30 am - 12:00 noon	MW#7 - Wind Machines - CM 2.0
9:30 - 11:00 am	Session Block #4
	California Rail Transportation - Back to the Future - Planners Emeritus Network Program - CM 1.5
	When New Meets Old: Additions to Historic Buildings - CM 1.5
	Long Live Rock! What Planners need to know about Mining and Reclamation Law and Practice - CM 1.5 LAW and MCLE 1.5
	There's An App For That! - CM 1.5
	Downtown Indio Revitalization Efforts - CM 1.5
	Drivers of Change in Urban Mobility: Technology, Management and Planning - CM 1.5
	The New California Dream: Responding to the Demand for Smaller, Walkable Urban Living - CM 1.5
	A Regional Trail for Neighborhood Electric Vehicles, Bikes and Pedestrians - CM 1.5
	Green Streets, Meet Complete Street - CM 1.5
	Annual CEQA Update: The Cycle of Change Continues - CM 1.5 LAW and MCLE 1.5

For more information visit www.APACalifornia.com

NOTE: All required APA California leadership meeting dates and times to be determined.
 The Conference-at-a-Glance is subject to change.

Continued on page 8



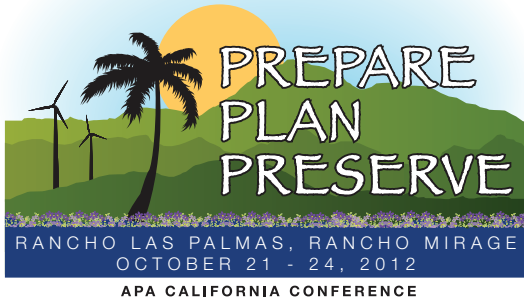
2012 APA California Chapter Conference CONFERENCE-AT-A-GLANCE

AICP Certification Credits
 CM credit approval is pending
 for these sessions.

MCLE Certification Credits
 1.5 hours participatory
 MCLE credits pending.

TUESDAY, OCTOBER 23

11:00 am - 12:30 pm	Session Block #5
	When Business Friendly Happens to Planners: Meeting Job Expectations and The Code of Ethics - CM 1.5 ETHICS
	The Mills Act: One Act, Many Implementations - CM 1.5 LAW and MCLE 1.5
	Mending the Tear in a Desert Downtown - CM 1.5
	Planning for Revitalization in a Post-Redevelopment World - CM 1.5
	Visual Literacy for Planners - CM 1.5
	Sneak Preview: Streamlining Housing Element Preparation and HCD Review - CM 1.5
	Connecting the dots...how to get from here to there. Wayfinding – A Cost Effective Infrastructure Program that Helps Brand, Link and Revitalize Towns and Cities - CM 1.5
	Helping Communities define their Place with GIS - CM 1.5 ETHICS
12:30 - 2:00 pm	Keynote Luncheon - Joel Reynolds, JD, Director, Marine Mammal Protection and Southern California Ecosystems Projects, Urban Program at the Natural Resources Council - CM 1.5
1:15 - 5:00 pm	MW#8 - Palm Springs International Airport - CM 2.0
1:15 - 5:00 pm	MW#9 - Historic Properties - CM 2.0
2:15 - 3:45 pm	Session Block #6
	Smart Preservation Success Stories - CM 1.5
	How Do You Manage a Project with CEQA & NEPA When You Don't Control All the Pieces? - CM 1.5
	The Disappearing Redevelopment Agency: The New Frontier for City Planning Departments - CM 1.5
	Re-visioning Southern California: Visionary Solutions and Strategies for Improving the Built Environment - CM 1.5
	Healthy People, Healthy Places: Transform Your Economy by Planning for Health - CM 1.5
	Are You Ready For The Next Big Wave: Tsunami Preparedness Planning - CM 1.5
	Unleash Your Inner Geek: Getting a Handle on Technology for Planning - CM 1.5
	Using Community Benefits to Stimulate Investment in Sustainable Communities - CM 1.5 LAW and MCLE 1.5
	Mission First: Smart Growth and Sustainability Principals for Navy and Marine Corps Installations - CM 1.5
	Behind the Dais: Taking the Mystery Out of Commission and Board Meetings - CM 1.5
3:45 - 4:15 pm	Afternoon Break
4:15 - 5:45 pm	Session Block #7
	Leading The Future- What Will It Take To Be Planning Leaders In The Future? - CM 1.5
	Implementing CAPs – Where Sustainable Ambitions and Fiscal/Political Realities Meet - CM 1.5
	Property Rights, Takings, and Exactions: A Legal and Practical Update for Planners - CM 1.5 LAW and MCLE 1.5
	Cracking the Code: Making a Form-Based/Traditional Hybrid Code Work for Your City - CM 1.5
	Forging Healthy Community Planning Through Collaboration, Advocacy and Policy-Making - CM 1.5
	Life without Redevelopment?: Assuring Smart Growth, Affordable Housing, and Reversing Blight in Disadvantaged Communities in the Post-Redevelopment Era - CM 1.5
	Reforming Parking Management at and around BART Stations and TOD - CM 1.5
	Competing for Jobs - Improve Your Resume, Interviewing and Get Your Foot in the Door
	Momentary Metropolis: Lessons from Burning Man for Today's Planners - CM 1.5
	"Occupy" this Session: The Protestor and Planning - CM 1.5
5:45 - 7:00 pm	Wine and Cheese Reception



2012 APA California Chapter Conference

CONFERENCE-AT-A-GLANCE

AICP Certification Credits
 CM credit approval is pending
 for these sessions.

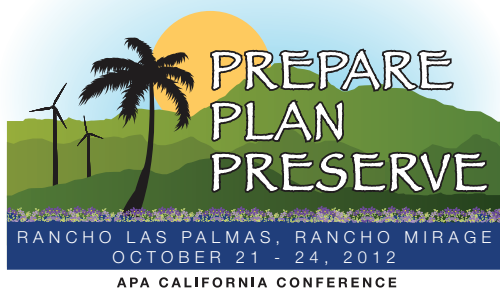
MCLE Certification Credits
 1.5 hours participatory
 MCLE credits pending.

WEDNESDAY, OCTOBER 24

7:30 - 8:30 am	Continental Breakfast
7:30 - 10:00 am	Exhibits Open
7:30 - 11:00 am	Conference Registration
7:30 - 9:00 am	Session Block #8
	Confronting California's Most Critical Challenges - CM 1.5
	21st Century Gold Rush: Solar Energy Development in the Golden State - CM 1.5
	Science & Tech in Sustainable Design and Planning: Useful Tools for Practitioners - CM 1.5
	Downtown Revitalization for Almost Free - CM 1.5
	Off-Site Public Improvements as a Map Condition: Negotiating Thorny Issues Arising Under Off-Site Acquisition Agreements With Developers And Litigating The Developer-Funded Eminent Domain Case - CM 1.5 LAW and MCLE 1.5
	Institutionalizing Living Street Design - CM 1.5
	Break Out the Crystal Ball: Community GHG Emissions Forecasts and Targets - CM 1.5
	Ethics Jeopardy: Testing What We Know About Ethics - CM 1.5 ETHICS
	Sounds of Sustainable/Urban Development - CM 1.5
8:30 am - 12:00 noon	MW#10 - Palm Springs Aerial Tramway - CM 2.0
8:30 am - 12:00 noon	MW#11 - Affordable Housing - CM 2.0
9:15 - 10:45 am	Session Block #9
	Passing the AICP Exam: Planning Jeopardy!
	Preservation Toolkit for Small Cities - CM 1.5
	Diverse Communities, Diverse Strategies: Lessons in Multicultural Outreach - CM 1.5
	Tips for Successfully Navigating the Federal Permitting Process - CM 1.5 LAW and MCLE 1.5
	Wresting with RHNA and Getting Quality Results with Form-Based Codes - CM 1.5
	Growth Modeling for Sustainable Communities: Building-Blocks of Climate Evaluation - CM 1.5
	Creating Safe Places - CM 1.5
	Help OPR Help You! Updating the General Plan Guidelines for the 21st Century - CM 1.5 LAW and MCLE 1.5
	Reworking the Business District - CM 1.5
10:45 - 11:45 am	Closing Keynote Session
11:30 am - 1:30 pm	Exhibitor Tear-Down

For more information visit www.APACalifornia.com

NOTE: All required APA California leadership meeting dates and times to be determined.
 The Conference-at-a-Glance is subject to change.



EXHIBITOR AND SPONSOR OPPORTUNITIES

Please make check payable to APA California and mail to:
 APA California Conference
 P.O. Box 214065, Sacramento, CA 95821

Fax exhibitor and sponsorship submission to: 760.674.2479

Name _____ Company Name _____
 Address _____ City _____ State _____ Zip _____
 Phone _____ Fax _____ Email _____

Exhibit and Sponsor Opportunities

Note: Booth and tabletop locations are on a first-come first-pay basis. See the next page for booth/tabletop numbers and availability.

Booth # Choice 1 _____ Booth # Choice 2 _____ Booth # Choice 3 _____
 Tabletop # Choice 1 _____ Tabletop # Choice 2 _____ Tabletop # Choice 3 _____

Exhibit and Sponsorship Package Opportunities

Conference Bags	<input type="checkbox"/> 1 Available - \$5,000
Conference Lanyards/Conference Badges	<input type="checkbox"/> 1 Available - \$2,750
Exhibit Booth & Mobile App	<input type="checkbox"/> 3 Available - \$2,750
Exhibit Booth & CPF Reception	<input type="checkbox"/> 3 Available - \$2,750
Exhibit Booth & Opening Reception	<input type="checkbox"/> 3 Available - \$2,750
Exhibit Booth & Keynote Luncheon	<input type="checkbox"/> 3 Available - \$2,750
Exhibit Booth & Opening Plenary Session	<input type="checkbox"/> 3 Available - \$2,750
Exhibit Booth & Continental Breakfasts	<input type="checkbox"/> 3 Available - \$2,750
Exhibit Booth & Closing Plenary Session	<input type="checkbox"/> 3 Available - \$2,750
Exhibit Booth & Student Scholarship Luncheon	<input type="checkbox"/> 3 Available - \$2,750
Exhibit Booth & Awards Luncheon	<input type="checkbox"/> 3 Available - \$2,750
Exhibit Tabletop & Afternoon Breaks	<input type="checkbox"/> 3 Available - \$1,750
Exhibit Tabletop & Mobile Workshops	<input type="checkbox"/> 7 Available - \$1,750

Sponsorship Only Opportunities

Silver	<input type="checkbox"/> 5 Available - \$2,750
Gold	<input type="checkbox"/> 3 Available - \$5,000
Platinum	<input type="checkbox"/> 2 Available - \$7,500

Golf Tournament Sponsorship Opportunities

Foursome Package	<input type="checkbox"/> \$1,000
Beverage Cart Sponsor	<input type="checkbox"/> \$500
Closest to the Pin Sponsor	<input type="checkbox"/> \$250
Longest Drive Sponsor	<input type="checkbox"/> \$250
Tee Sign Sponsor	<input type="checkbox"/> \$100

Exhibitor Registration

Exhibits are for the support of the conference and promotion of your product, service, or program and have been created for flexibility in price and level of exposure. Exhibit locations are on a first-come, first-pay basis.

A specified number of complimentary exhibitor badges (complimentary for booth staff use only and does permit attendance at sessions, meals, or events) are included in the booth and tabletop costs.

Please Total the Items Selected Above Here

Sponsorship Package Opportunities Total \$ _____ Sponsorship Only Opportunities Total \$ _____

I would like to donate an item for the conference registration bag (i.e. pens, notepads, mints, magnets, lapel pins, etc.) *Please note that the 2012 Conference Committee approval is required for items to be included in conference registration bag.*

Item _____

Exhibitor and Sponsorship Questions

APA California 2012 Conference Office: Lynne C. Bynder, CMP, APA California Chapter 2012 Conference Planner
 Email: lbynder@meetingsxceptional • Fax: 760.674.2479

President's Message

By Kevin J. Keller, AICP, President, kevin.keller@lacity.org

APA California Comes to Rancho Mirage



Summer is here, and I hope many of you get a chance to take a vacation, hit the road, and see some of our great state! As you plan your summer and fill up your weekends with planning-themed getaways, be sure to get out the calendar and put a big red circle around October 21 - 24 for our upcoming APA California annual conference.

This year's state conference will be held in sunny Rancho Mirage at the Rancho Las Palmas hotel. It will be the premiere California planning event, capping off a truly excellent year for APA California. This year's conference theme is "Prepare, Plan, Preserve" and conference-goers will be treated to professional development sessions, workshops, and speakers as well as networking opportunities. Registration is open now at the APA California website, www.APACalifornia.com. If you were able to join us last fall in Santa Barbara, you saw firsthand how APA is emphasizing value, low cost, and relevant content in all of our programming. One relatively low-cost registration fee gets you access to all sessions, keynotes, and the opening networking reception from the start of the conference till it ends. There is even free student programming all day on Sunday October 21 in addition to APA's standard conference events.

Consider adding an optional mobile workshop to your schedule this year, and travel to green energy windfarms, the Palm Springs aerial tramway, the Sunnylands estate, airport planning, and desert water facilities. Each mobile workshop is sure to sell out quickly, be sure to check them out on the conference registration page.

So if you end up working too much and miss the sun this summer, we will serve up a bit more for you in October in Rancho Mirage. Register for the APA California conference at www.APACalifornia.com by August 17 to get the early bird rate, saving you even more. Hats off to the APA Inland Empire Section for hosting this gala event in the fall!

As we look ahead, let's also take a moment to look back (well, not that far back) and congratulate our organization on a job well done hosting the APA National Conference in Los Angeles last April. Nearly 5,000 land use professionals from across the nation came to California to see a little bit of what we do, how we do it, and how California is leading in land use. Over 175 volunteers worked for nearly 18 months to pull together a terrific program, with seamless special events, receptions, and memorable local host programs. Next year, the APA National Conference travels to windy Chicago... but is rumored to be coming back to California before the end of the decade... San Francisco, anyone? We will be very lucky to boast two National Conferences in California in a single decade.

So let me wish a very happy summer to everyone, and I hope you enjoy all that APA California has to offer! I'll see you by the pool.

SWA
A World Leader in Landscape Architecture
Landscape Architecture • Planning • Urban Design
www.swagroup.com

DESIGN, COMMUNITY & ENVIRONMENT

1625 SHATTUCK AVENUE, SUITE 300
BERKELEY, CALIFORNIA 94709
TEL: 510 848 3815
FAX: 510 848 4315
www.dceplanning.com
comprehensive planning | urban design | environmental review
landscape architecture | public participation | smart growth | GIS

GRUENASSOCIATES

Architecture	Master Planning
Environmental Planning	Specific Plans
Transportation Planning	Urban Design/Revitalization
New Community Planning	Campus Planning
Community Participation	Landscape Architecture

carbrey@gruenassociates.com tel 323 937 4270
www.gruenassociates.com fax 323 937 6001
6330 San Vicente Blvd., Suite 200, Los Angeles, CA 90048

URBAN DESIGN
CAMPUS PLANNING
LANDSCAPE ARCHITECTURE
LAND PLANNING

San Francisco (415) 249-0130
Nevada City (530) 264-7033
www.bmsdesigngroup.com

DUDEK

Environmental Planning	Biological Services
CEQA/NEPA	Urban Forestry
Habitat Management	Contract Staffing

PLAN | DESIGN | PERMIT | CONSTRUCT | MANAGE
WWW.DUDEK.COM | INFO@DUDEK.COM

Where solutions and service meet

Los Angeles
Oakland
Olympia
Petaluma
Portland
Sacramento
San Diego
San Francisco
Seattle
Tampa
Woodland Hills
www.esassoc.com

Michael Brandman Associates

<ul style="list-style-type: none"> • Environmental Planning • Natural Resources • Regulatory Compliance • Cultural Resources • Restoration Planning • Air Quality & Climate Change • Water Resources 	<p>Locations Fresno, Irvine, Palm Springs, Sacramento, San Bernardino & San Ramon</p> <p>(714) 508-4100 www.brandman.com</p>
---	---

CHAPTER OFFICERS

President		
Kevin J. Keller, AICP	213.978.1211	kevin.keller@lacity.org
Vice President, Administration		
Virginia M. Viado	909.980.4000	virginia.viado@urs.com
Vice President, Conferences		
Janna Minsk, AICP	805.933.4214	jminsk@spcity.org
Vice President, Policy & Legislation		
David M. Snow, AICP	213.626.8484	dsnow@rwglaw.com
Vice President, Professional Development		
Juan F. Borrelli, AICP	408.793.4384	juan.borrelli@sanjoseca.gov
Vice President, Public Information		
Hing Wong, AICP	510.464.7966	hingw@abag.ca.gov
President Elect		
Brooke E. Peterson, AICP	858.336.0938	brooke.e.peterson@gmail.com
California Planning Foundation President		
Linda F. Tatum, AICP	310.412.5230	ltatum@cityofinglewood.org
Planning Commission Representative		
Marc Yeber	323.848.6475	myeber@hotmail.com
Student Representative		
Cindy Ma	510.913.0697	cma03@calpoly.edu

SECTION DIRECTORS

Central		
Ralph Raffi Kachadourian	599.876.6300	kachralph@gmail.com
Central Coast		
Dave Ward	805.654.3964	dward@cityofventura.net
Inland Empire		
Leisa A. Lukes, RLA	760.770.0386	llukes@cathedralcity.gov
Los Angeles		
Marissa Aho, AICP	818.716.2787	marissa@raa-inc.com
Northern		
Hanson Hom, AICP	408.730.7450	hhom@ci.sunnyvale.ca.us
Orange County		
Jennifer Lilley, AICP	714.672.9906	jennifer@lilleyplanning.com
Sacramento Valley		
Julia Lave Johnston	530.757.8987	jjohnston@ucde.ucdavis.edu
San Diego		
Daniel K. Wery, AICP	858.614.5081	dwery@rbf.com

APPOINTED MEMBERS

AICP Coordinator		
Glenn Lajoie, AICP	949.855.3663	gal@rbf.com
Cal Planner Coordinator		
Jason Su	626.232.9317	sujason25@gmail.com
Chapter Historian (Northern California)		
J. Laurence Mintier, FAICP	916.446.0522	mintier@mintierharnish.com
Chapter Historian (Southern California)		
Steven A. Preston, FAICP	626.308.2805	spreston@sgch.org
Communications Technology Director		
Vacant		
FAICP Coordinator		
Carol D. Barrett, FAICP	626.308.2806	caroldbarrett@gmail.com
Marketing Director		
Derek R. Hull	310.605.5532	dhull@comptoncity.org
Membership Inclusion Director (Northern California)		
Connie Galambos Malloy	510.839.9510	connie@urbanhabitat.org
Membership Inclusion Director (Southern California)		
Anna M. Vidal	818.374.5043	anna.vidal@lacity.org
National Policy & Legislative Representative		
Christopher I. Koontz	213.473.7005	cikoontz@gmail.com
Program Director (Northern California)		
Andrea J. Ouse, AICP	650.238.0015	andrea.ouse@lsa-assoc.com
Program Director (Southern California)		
Al Zelinka, FAICP	714.738.3347	alz@ci.fullerton.ca.us
State Awards Coordinator (Northern California)		
Andrea J. Ouse, AICP	650.238.0015	andrea.ouse@lsa-assoc.com
State Awards Coordinator (Southern California)		
Danny Castro	626.355.7135	dcastro@cityofsierramadre.com
University Liaison		
David Salazar	562.985.4131	salazar@csulb.edu
Young Planners Coordinator		
Ted Holzem	916.446.0522	ted@mintierharnish.com

NON-VOTING MEMBERS

APA Board Director, Region 6		
William R. Anderson, FAICP	619.684.6941	william.anderson3@aecom.com
AICP Commissioner, Region 6		
Lance Schulte, AICP	858.712.8400	lance.schulte@hdrinc.com
APA Student Representative, Region 6		
Sean Noonan	714.470.8724	smartgrowthsean@gmail.com
Planner Emeritus Network President		
George Osner, AICP	209.985.3846	gosner@ainet.com

CAL PLANNER

The *California Planner* is the official publication of the APA California. Each APA California member receives a subscription as part of chapter dues. Additional subscriptions may be purchased for \$22 per year.

Send editorial submissions and queries to APA California, Dorina Blythe, GranDesigns, 31807 Green Oak Way, Temecula, CA 92592 or e-mail them to Dorina@GranDesigns.us. Rates for job announcements, display and calling card advertisements can be obtained by visiting the APA California website at <http://www.calapa.org/en/cms/?294> or by contacting Laura Murphy at 916.773.0288 or email nhe2011@live.com.

APA California Election Nominations Now Open!

By Brooke Peterson, AICP, APA California President-Elect

We are pleased to announce that APA California's Leadership Recruitment and Development season is underway. We are seeking qualified candidates from our membership to run for Chapter Board of Directors positions and encourage you to consider serving your profession and colleagues. The following positions are open during this election cycle:

Vice President for Conferences
 Vice President for Policy and Legislation
 Vice President for Professional Development
 Planning Commissioner Representative

A list of duties for each of the positions is included here for your consideration or can also be found on our website. If you are interested in being considered for one of the above positions, please read the information contained in the 2012 APA California Election Policies and Procedures, which can be found on our website at www.calapa.org.

The following materials (all posted on our website) must be returned to Brooke Peterson, AICP, APA California President-Elect, by August 15, 2012. Please e-mail the information to bpeterson@planningcenter.com or fax at (619) 297-2354:

Position Statement

A position statement, no greater than 600 words, prepared in accordance with the "Guidelines for Writing Background/ Experience and Position Statement (Appendix 1 to the Policies and Procedures)." You are encouraged to focus your statement on issues and ideas affecting the future of the organization. To assist you in preparing your statement, please refer to the APA California Chapter Strategic Plan, available at www.calapa.org. Please note that should you be nominated, this statement will be published on APA California's website.

Eligibility Form

(Appendix 2 to Policies and Procedures):

The form asks you to identify the office for which you wish to be considered, and to make a personal commitment to serve, if elected.

Agreement to Abide Form

(Appendix 3 to Policies and Procedures)

Commitment to Serve Statement

(Appendix 4 to Policies and Procedures)

Optional Materials

- *Photographs:* Candidates for office may also submit, by September 5, 2012, a recent photograph to be published with the position statement. Please refer to the "Campaign Policies" Section 4.2 for details.
- *Supplemental materials:* If the nominating committee determines that it requires information or materials not mentioned above, it will ask you for them. Unsolicited additional materials and phone calls to nominating committee members are strictly prohibited.

The duties of the Vice President for Conferences shall be:

- a. Manage and oversee the planning of the annual APA California Chapter State Conference providing general guidance and assistance to the Chapter's contract Conference Coordinator;
- b. Act as a liaison with the Local Host Committee for the annual APA California Chapter State Conference;
- c. Assist the Vice President for Administration with establishing the annual conference budget;
- d. Assist the Vice President for Professional Development and the Statewide Programs Coordinator with the annual conference program selection;
- e. Assist the Vice President for Public Information with promotion of the annual conference in all Chapter publications and electronic media;
- f. Maintain and update the Conference Manual;
- g. Develop annual conference schedule with input from the Chapter Board;
- h. Manage and oversee the Conference Sponsorship Coordinator on the solicitation of sponsorships and exhibitors;
- i. Manage and oversee the Conference Management Contractor and all contractors related to the execution of the conference;
- j. Present a final report for the annual conference at the first Board of Directors meeting following the conference; and
- k. Perform any other duties assigned by the Chapter Board of Directors.

APA California Election Nominations Now Open

Continued from page 13

The duties of the Vice President for Policy and Legislation shall be:

- a. Monitor, comment and develop positions regarding policy and legislation relating to APA's mission;
- b. Establish a process and obtain input from members regarding state policy and legislation;
- c. Determine planning issues of broad concern to members which require State legislation;
- d. Determine actions to be taken to implement APA California's position in consultation with the Chapter Board of Directors and members;
- e. Organize actions in support of APA California's position together with the Chapter's legislative advocate;
- f. Act as liaison between APA California's legislative program and National APA's Government Affairs program, which represents the planning profession in Washington, D.C.;
- g. Conduct an annual legislative workshop or other session;
- h. Assist the Chapter legislative advocate in conducting the Legislative Review Team program, involving a minimum of two meetings each per year, in both Northern and Southern California; and
- i. Perform any other duties assigned by the Chapter Board of Directors.

The duties of the Vice President for Professional Development shall be:

- a. Promote professional development and continuing education, including the provision of Chapter-sponsored workshops each year;
- b. Serve as a Director of the California Planning Foundation;
- c. Coordinate the activities of the Section Professional Development Officers, including the preparation for the AICP exam;
- d. Provide liaison with university and college planning departments and other professional organizations;
- e. Conduct a session at the State conference relating to the AICP exam;
- f. Conduct annual meetings with Section Professional Development Officers (PDOs) at the State conference;
- g. Coordinate the Certification Maintenance (CM) Program among California AICP members;
- h. Coordinate activities of the AICP Exam Workshop Coordinator, Statewide Programs Coordinator, and the FAICP Coordinator;
- i. Act as liaison with the American Institute of Certified Planners Commission and the National Planning Accreditation Board; and
- j. Perform any other duties assigned by the Chapter Board of Directors.

The duties of the Planning Commissioner Representative shall be:

To reflect planning official perspectives on planning and planning issues in California as a member of the Chapter Board of Directors, and at the annual APA California conference, and to increase planning commissioner participation in APA and APA California. The Planning Commissioner Representative shall also implement the Strategic Plan by implementing the goals of the Mission Statement, the fundamental tenants and the strategies associated with membership development and diversity and to develop a more complete set of tasks centered around Planning Commission involvement. The Planning Commissioner Representative shall report to the President.

If you have any questions on the APA nomination process, please feel free to contact Brooke Peterson, AICP, APA California President-Elect at 858.336.0938 or by email at bpeterson@planningcenter.com.



Congratulations to California's Newest Candidate AICP Members!

By Juan Borrelli, AICP, Vice President for Professional Development

On behalf of the entire APA California Board of Directors, please join me in extending a very **BIG CONGRATULATIONS** to each of California's newest candidate AICP members:

Central Coast Section:

Iain Holt

Los Angeles Section:

Eric Banghart

Matthew T. Benjamin

Jesse C. Calhoun

Beth Chow

Jason Kligier

Juan Matute

Sharon Song

Jessica Suimanjaya

Mindala Wilcox

Northern Section:

Fiona M. Akins

Eric B. Anderson

Paul A. Bignardi

Kimberly Brosseau

Jonah K. Chiarenza

Aaron M. Cook

Thomas Cornillie

Lindsay Hagan

Erin N. Harwayne

Todd T. Henry

Lauren Kotwal

Shaun M. Lacey

Alex Lantsberg

Joshua S. Lazarus

Jessica M. Look

Scott McKay

Northern Section Continued:

Stanley I. Muraoka

Jeanne Naughton

Melissa D. Reggiardo

Avalon Schultz

Paul Supawanich

Ernesto A. Vilchis Puga

Megan E. Wessel

Laura Wolfgram

Cindy Yee

Orange Section:

Christian W. Murdock

Sacramento Valley Section:

David Carter

Genevieve Evans

Robert A. Halpin

Tan Hoang

Chris Thomas

San Diego Section:

Asha R. Bleier

Adriana L. Calderon

Eric C. Crockett

David B. De Vries

Maria Filippelli

Heather Martinelli

Clint T. Meyer

Zachary Miller

Membership Financial Support Program Continues in 2012

Relief is available from APA California for those who are contemplating dropping their APA California memberships.

The Board of Directors recently approved to continue the Chapter Membership Financial Support Program for 2012, and has committed funds from its reserve account towards a membership/conference support program. Funding has been established in a separate account to provide direct financial support towards membership fees, and another account has been provided for assistance to attend the annual state conference.

If you are unemployed or if your household income has dropped substantially, then this program is designed for you.

Eligibility requirements and additional program details are available on the APA California website at this link:

<http://www.calapa.org/attachments/wysiwyg/38/APACaliforniaMemberFinancialSupportProgram2012.pdf>.

Planning and Project Services | Legal Support
Issues Research and Management
GIS, Graphics, and Mapping
www.mintierharnish.com (916) 446-0522

GHD is one of the world's leading engineering, architecture and environmental consulting companies. Our 6500 people serve clients in water, energy and resources, environment, property and buildings, and transportation.

www.ghd.com



The California Chapter had a total of 75 planners who sat for the May 2012 AICP Exam. Of those, the 49 people listed above passed, which represents a 65 percent pass rate for California. For this exam, California's pass rate is just slightly higher than the national pass rate of 64 percent since nationally, 508 applicants sat for this exam and 327 passed. Passing the AICP Exam allows application for AICP membership and the commitment to a professional code of ethics and continuing education in their professional advancement. For more AICP Code of Ethics, Professional Development, or Certification Maintenance (CM) Credit resources, please go to: <http://www.calapa.org/en/cms/?140>.

Cal Planner is proud to highlight and showcase each of the eight APA California Sections.

Central Coast Section Planning News

By David Ward, Central Coast Section Director

For over 60 years, the heart of the City of Ventura has been separated from its most notable natural resource, the ocean. This divide was created when the 101 freeway was introduced, bisecting nearly all of the downtown, leaving only two street connections. Not only does the freeway separate downtown from the ocean, but it also limits opportunities for a coordinated approach to public transit. The Union Pacific tracks, which are also used by Amtrak, cross the freeway at an angle via a single-track trestle bridge in the downtown. This design precludes opportunities for more frequent rail service (for example, connecting to the Metrolink commuter rail system) and separates the Amtrak train station from all the city's bus routes, thereby inhibiting the development of a central bus/rail station. A strategy for bridging the divide has been sought for years and now a new initiative is gaining momentum.



Phasing Plan
PHASE - B

Existing Downtown and Freeway Condition



Site Plan
PHASE - C

Proposed Capping with redevelopment, mixed uses and recreation amenities

Continued on page 17



Planning & Design

Wallace Roberts & Todd, LLC

444 Townsend Street | Suite 4
San Francisco, CA 94107
T 415.575.4722
F 415.436.9837

www.wrtdesign.com

DYETT & BHATIA

www.dyettandbhatia.com

755 Sansome St. Suite 400
San Francisco, CA 94111

415.956.4300

General Plans
Urban Design
Specific Plans
Zoning
Environmental Planning



TERRA NOVA[®]

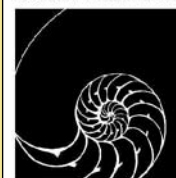
Planning & Research, Inc.

- GENERAL COMPREHENSIVE PLANS
- PUBLIC AGENCY PLANNING
- ENVIRONMENTAL PLANNING
- ENVIRONMENTAL ASSESSMENTS
- SPECIFIC MASTER PLANS
- PERMIT PROCESSING
- NEPA/CEQA ANALYSIS

42635 Melanie Place, Suite 101 Palm Desert, CA 92211 Telephone: 760.341.4800 • Fax: 760.341.4455 E-Mail: nlawson@terranovaplanning.com

LAMPHIER - GREGORY

URBAN PLANNING & ENVIRONMENTAL ANALYSIS



1944 Embarcadero
Oakland, CA 94606
510 535 6690
510 535 6699 fax



Hatch Mott
MacDonald

Delivering Transportation
Planning Solutions

1300-B First Street
Gilroy, CA 95020
T. 408.848.3122
F. 408.848.2202
www.hatchmott.com

ROMA

URBAN DESIGN • DEVELOPMENT PLANNING
STREETScape DESIGN • SPECIFIC PLANNING

1527 Stockton Street, San Francisco, CA 94133
415.616.9900 • www.roma.com

LSA

LSA ASSOCIATES INC.

www.lsa-assoc.com

PLANNING | ENVIRONMENTAL SCIENCES | DESIGN

Central Coast Planning and Section News

Continued from page 16

Funded through SCAG Compass grants (www.compassblueprint.org), the Ventura Beach+Town project has potential to serve as a transformational project that will greatly expand both local and regional transportation options, reconnect Ventura's historic downtown with the Pacific Ocean, heal the urban fabric almost half a century after it was scarred, and create new public and private development opportunities on land reclaimed from the freeway.

Conceptual plans, including an animated flyover video, are posted at www.cityofventura.net/page/beachtown. Next steps include seeking financing, coordinating and negotiating with Caltrans, Union Pacific, property owners, and other key stakeholders, and forming a regional coalition of other California cities pursuing cap projects. For more information: www.cityofventura.net/page/beachtown.

Spotlight on Central Coast Section Happenings

After hosting the 2011 State Conference in Santa Barbara, the Section Board is busy organizing three new or expanded efforts to our membership, in addition to our ongoing professional development series:

Young Planners Group

Our local YPG launched kick-off events in May across all three of our subsections—San Luis Obispo, Santa Barbara and Ventura Counties. Activities to promote our young planning professionals are underway, including a Planner Mentor program this fall matching up our most recognized planning professionals with young professionals to establish relationships, provide coaching, and assist with career development.

Community Event

This October, in recognition of National Planning Month, professional and student members will sponsor and host an all-member get together while we give back to the community. Ideas for potential projects in disadvantaged communities are currently being developed, with the best project to be selected by the Board and repeated as an annual event.

Planning Academy

After the successful 8-week Planning Academy held in 2010 for Ventura county residents, activists, and local officials, the Academy moves north to San Luis Obispo this fall, followed by a Santa Barbara version anticipated in 2013. The Planning Academy teaches non-planners the basics of land use planning, and is currently a nominee for a State Award at the 2012 Rancho Mirage State Conference.

For more Section news, visit our website at <http://www.centralcoastapa.org/> and our newsletter at <http://www.openspace-cc.com/>.

PAGE & TURNBULL

ARCHITECTURE
PLANNING & RESEARCH
PRESERVATION TECHNOLOGY www.page-turnbull.com

SACRAMENTO 916.930.9903	SAN FRANCISCO 415.593.3239	LOS ANGELES 213.221.1200
----------------------------	-------------------------------	-----------------------------

Better Rules
Make Better Places

Online intro
course

The ABCs of
Form-Based
Codes at

www.formbasedcodes.org

FBCI Form-Based
Codes Institute

P: (805) 543-1794 | www.rrmdesign.com

rrmdesigngroup

creating environments people enjoy*

Specific Plans | Urban Design | Community Outreach
architects | engineers | landscape architects | planners | surveyors

Pay Your APA National Dues Monthly

National APA provides members with an option to pay their dues on a monthly basis. If you cannot afford the lump sum contact National APA and have your dues prorated over 12 months and deducted directly from your bank account. Contact National APA for more information or when you receive your dues statement ask for that option. www.Planning.org



Statewide Parking Standards Bill Dropped for 2012

By David Snow, AICP, APA California, Vice President, Policy & Legislation

Assembly Bill 904 proposed to set statewide minimum parking standards for projects well-served by existing or planned transit. As proposed, the bill would have restricted the ability of local agencies to require parking in excess of those statewide minimum standards, unless the agency adopted an “opt-out” ordinance by making specific findings.

APA California, from a policy perspective, actively supports reduced parking requirements near active transit stations. We recognize that excessive minimum parking requirements may increase the cost of development and continue to encourage automobile-focused development patterns. That said, statewide legislation seeking to reduce parking requirements must recognize the diversity of circumstances, uses, and needs in ’s communities. In addition, such legislation should support, not undercut, existing local policies that set progressive minimum parking standards. We continue to believe that practicing planners are experts in their field and in their communities, and should be afforded the opportunity to consider, analyze, and recommend development characteristics they believe will result in strong and vibrant communities, taking into account local circumstances.

When presented with AB 904 late in the legislative session, APA California developed a preliminary position of oppose unless amended. This preliminary position was developed after receiving input from APA California members and taking into account discussions with the APA California Legislative Review Committee. In an effort to gain additional input, an e-mail was broadly distributed to APA California members, stating our preliminary position and seeking member feedback. And feedback we received - both pro and con!

Thereafter, on some blog posts and articles, APA California’s position was mischaracterized as an effort to block any reform of out-of-date parking standards. This is not the case. Representatives of APA California engaged in extensive dialogue with the author’s office, as well as with the bill’s sponsors, the Infill Builders Federation. In the course of numerous conversations, we expressed our concerns and provided constructive comments regarding the bill as initially drafted – many of which were very well received. While working on AB 904, a number of APA California members expressed concern that the huge diversity among ’s cities and counties renders a single statewide default standard inappropriate because individual agencies would be limited in their ability to take into account their unique situations. A number of other members indicated that their jurisdictions have already adopted progressive parking standards in transit-intensive areas or in connection with affordable housing incentives. Members expressed concern that the preemptive effect of statewide legislation would undercut these progressive

local efforts tailored to particular community needs. Of particular concern was the identical treatment of all non-residential uses with a 1 space per 1000 square foot parking ratio. Members noted that this requirement would not account for the fact that grocery stores, restaurants, medical offices, and other uses have different parking demands, especially in diverse urban contexts. These members strongly advocated against this statewide legislation. In response to these comments and concerns, the bill was amended to require 2 spaces per 1000 square feet.

On the other hand, we received equally strong comments requesting that APA California support the bill as initially drafted. This position was based in large part on the premise that local governments lack the will to undertake and adopt meaningful parking reforms, and would do so only if required by state law. Proponents believe that the bill would promote transit choice and reduce dependence on automobiles. In addition, proponents believe that the bill would result in meaningful reductions in construction costs that would encourage the development of affordable housing and infill development, even though developers could take advantage of the reduced parking standards without restricting units for low or moderate income households.

In sum, there is no shortage of strong opinions on these issues! The existence of these numerous viewpoints, and the healthy dialogue that has resulted, has reinforced the overwhelming consensus that parking reform is warranted, while at the same time reinforcing that any reform must be clearly drafted so that planning practitioners responsible for implementing the laws understand what is required and expected, and that do not introduce unnecessary risks in an entitlement process.

APA California has continued to work with the author’s office and the Infill Builders to revise the bill with the goal of arriving at a bill that APA California could support. Significant progress was being made this year when we learned that Assembly Member Skinner decided to drop the bill for this year. APA California is committed to continue working with the sponsors toward legislation that we could support, and we look forward to achieving that goal in 2013.

The diversity of opinion on this bill is indicative of an engaged and active APA California membership, and we are glad this issue has generated such a vibrant conversation! We continue to welcome and encourage input from APA California’s membership on this issue, so please share your thoughts with Sande George, APA California’s legislative advocate, at sgeorge@stefangeorge.com and Dave Snow, Vice President of Policy and Legislation, at dsnow@rwglaw.com.

APA California Legislative Update - Summer 2012

APA California's Quick Legislative Update

By David M. Snow, AICP, Vice President Policy & Legislation, APA California and
Sande George, Legislative Advocate, APA California



The following is a quick update of important planning legislation. ***PLEASE TAKE THE TIME TO REVIEW THE INFORMATION BELOW AND ALERT YOUR SECTION MEMBERS AND EMPLOYERS OF LEGISLATION OF INTEREST.***

Hot Bills and topics:

Redevelopment Update

There are a number of bills still moving that attempt to assist redevelopment successor agencies in a variety of areas, propose new options for economic development tools going forward, and provide affordable housing monies to replace the redevelopment set aside funds that are now gone. The redevelopment trailer bill to the recent budget sent to the Governor has yet to be finalized but will most likely include many of the key provisions in the following bills.

The Budget

The budget includes taking over \$1.4 billion in “one-time” benefits from redevelopment cash reserves, including housing set asides.

AB 1585 – Redevelopment Next Steps/Successor Agencies/Housing (Speaker Perez)

APA California supports, in Senate Governance & Finance Committee

This bill is one of the key AB1X 26 cleanup bills. It would modify the scope of the term “enforceable obligation” for the transfer of housing funds and responsibilities associated with dissolved redevelopment agencies. The bill would provide that any amounts on deposit in the Low and Moderate Income Housing Fund of a dissolved redevelopment agency be transferred to other successor agencies and used for affordable housing purposes.

AB 2144 – Revitalization Financing Districts (Speaker Perez)

APA California supports in Senate Governance & Finance Committee

This bill expands the powers of an infrastructure-financing district (IFD) and renames IFDs infrastructure and refinancing districts (IRFD). Specifically, this bill expands the types of public capital facilities or projects of communitywide significance an IRFD can finance; authorizes an IRFD to utilize the powers under the Polanco Redevelopment Act in order to finance environmental remediation and brownfield restoration; reduces the vote threshold for creating an IRFD and issuing bonds from two-thirds voter approval to 55% voter approval; and specifies that IRFDs can only divert property tax increment revenues from other local governments, excluding school districts.

SB 654 – Redevelopment Next Steps (Pro Tem Steinberg)

APA California supports in Assembly Housing Committee

Like Speaker Perez’s bill (AB1585), this bill is also a cleanup measure to AB1X 26. It would also revise the definition of the term “enforceable obligation” and modify the transfer of housing funds and responsibilities associated with dissolved redevelopment agencies. The bill would provide that any amounts on deposit in the Low and Moderate Income Housing Fund of a dissolved redevelopment agency be transferred to successor agencies and used for affordable housing purposes. The Pro Tem has now publicly stated that the housing set aside funds he anticipated for this bill may no longer be feasible to use for this purpose given the Governor’s proposal to use these funds to balance the budget, and the large deficit which now pits these monies for housing against even deeper health and welfare cuts.

APA California Legislative Update - Summer 2012

Continued from page 19

SB 986 – Redevelopment Bond Proceeds (Dutton)

APA California supports on the Senate floor

SB 986 would authorize successor agencies to use the proceeds of bonds issued by former redevelopment agencies prior to January 1, 2011 to fulfill an enforceable obligation of the former agency or enter into new enforceable obligations funded by those bond proceeds until December 31, 2014.

SB 1151 – Long Range Asset Management Plans (Pro Tem Steinberg)

APA California Supports with County suggested amendments in the Assembly

SB 1151 would create an alternative process that allows communities to use their former redevelopment agencies' assets for economic development and housing purposes. This bill establishes an alternative framework for the disposition of former RDA assets for communities that form a JPA by August 1, 2012. Currently this measure is narrowly focused on transportation planning areas, and does not recognize county urbanized areas not served by transit. CSAC has proposed amendments to include an expanded list of eligible uses.

SB 1156 – Community Development and Housing Joint Powers Authority (Pro Tem Steinberg)

APA California supports with County suggested amendments in the Assembly

This bill would allow cities and counties to form Community Development and Housing joint powers authorities to administer economic development and housing programs. Currently this measure, like SB 1151, is narrowly focused on transportation planning areas, and does not recognize county urbanized areas not served by transit. CSAC has proposed amendments to include an expanded list of eligible uses.

CEQA Update

In the beginning of the year, there were a number of CEQA bills that APA opposed. The majority of those bills have now been amended to address our concerns, or have been dropped. Below are the remaining CEQA bills APA California is actively lobbying:

SB 984/AB 1570 – Concurrent Preparation of Record (Simitian/Feuer/Perea)

APA California supports SB 984

(APA California and the other members of the working group have been working with the authors of the two similar measures to request the bills be amended to be consistent with Senator Simitian's bill.) ***SB 984 in Assembly Natural Resources and AB 1570 in Senate Environmental Quality***

These bills would require the lead agency, at the request of a project applicant, to prepare a record of proceedings concurrently with the preparation and certification of an EIR. APA California was part of a working group that amended SB 984 to address a number of issues of concern to local jurisdictions. The amendments:

- 1) Limit the types of CEQA documents to which the bill applies to EIRs, negative declarations, mitigated negative declarations, and other environmental projects for a broader range of projects (i.e., projects of statewide, regional, or area wide significance; environmental documents prepared under SB 375, and infill projects under SB 226). The concurrent preparation requested for any other project would be subject to the consent of the lead agency.
- 2) Trigger the bill at the request of an applicant to the lead agency at the start of the process, no later than 30 days after the date the lead agency determines that a particular type of environmental document is required.
- 3) Require the lead agency to certify the record of proceedings within 30 days after filing the notice of determination for the project rather than the original 5 days after approval of the project.
- 4) Clarify that the project applicant must reimburse the lead agency for costs incurred to comply with requirements of the bills as the local agency determines.

SB 972 – Environmental Quality (Simitian)

APA California is working with author on ECAT Amendments. In Assembly Natural Resources

This bill, while currently making a few changes to CEQA, will be the vehicle for APA's ECAT CEQA streamlining recommendations as well as others. The current piece under discussion is a revised process to reduce late comments.

Flood and Fire Planning

SB 1241 – Planning for State Responsibility Areas and High Fire Hazard Severity Zones in Safety Element (Kehoe) ***APA California supports. In Assembly Natural Resources***

APA California assisted in drafting the language for this bill to be consistent with best planning practices in this area. It would revise the safety element requirements for state responsibility areas and very high fire hazard severity zones. It would require the safety element, prior to January 1, 2015, and thereafter upon each revision of the housing element, to be reviewed and updated as necessary to address the risk of fire in state responsibility areas and very high fire hazard severity zones. It would also require cities and counties in high fire areas to make findings related to fire safety before approving projects.

Continued on page 21

APA California Legislative Update - Summer 2012

Continued from page 20

SB 1278 – Levees (Wolk)

Supports with ongoing discussion on additional amendments. In Assembly local government

This bill is the vehicle for the 200-Year Flood Protection statute clarification. APA California is working with the League of California Cities, CSAC and the Department of Water Resources to ensure that the General Plan, zoning ordinance, and approval/mitigation/permitting requirements on projects within high flood areas are consistent with the intent of the original measure, SB 5 of 2007. This bill is necessary to clarify these sections, which have been interpreted differently by DWR in its Draft Urban Level of Flood Protection Criteria than local agencies believe the statute intended.

Parking Limitations

AB 904 – Limitations on Parking Requirements for All Projects (Skinner)

APA California opposes unless amended. In Senate Governance and Finance

AB 904 is a new version of AB 710 from last year. It would impose a single statewide parking standard for both non-residential and residential infill and transit-close projects on the many diverse cities and counties in California. As it is to be amended, a city or county could impose higher parking standards if the local agency makes findings that such parking minimums don't work based on one of four different factors, and adopts an ordinance. APA California actively supports reduced parking requirements near transit. However, we also believe that any mandated reduced parking requirements need to recognize the diversity of circumstances, uses and needs in California's communities. After an email blast was sent to APA California members, there has been a lot of discussion, pro and con, for reduced parking standards from our members.

During the past week APA California representatives have engaged in a dialogue with the author's office as well as the sponsors, the Infill Builders Federation, and have expressed concerns regarding the bill as currently drafted. These discussions have resulted in the submittal of a letter to Assembly Member Skinner's office opposing the bill unless it is amended. Further, APA California has committed to participating in an ongoing dialogue regarding the bill and potential alternatives that might achieve the mutual objectives of APA California and the bill's author and proponents. We welcome continued input from APA California's membership, so please share any thoughts you may have with Sande George and Dave Snow.

Solar Permit Project Approval Streamlining

SB 1222 – Solar Energy (Leno)

APA California opposes the bill as currently drafted. In Assembly Local Government

This bill would place a cap on building permit fees on solar residential systems and require local agencies to justify their "reasonable costs" in a finding and ordinance for any fees that exceed \$400. The cap in this measure is based on a now outdated Sierra Club study. APA California opposes the arbitrary cap and is working with the author and the Governor's office to codify the Governor's building code process that is designed to clarify the building code for common residential solar systems, as well as provide a tool kit for local governments to assist them in streamlining their solar permitting processes.

Sidewalk Repairs

AB 2231 – Sidewalk Repairs (Fuentes)

APA California remains opposed unless amended until we see new language on the Assembly floor.

This bill would have shifted responsibility for dangerous or inoperable sidewalks from adjacent property owners to local agencies and prohibited local agencies from imposing assessments on adjacent property owners for sidewalk repairs, including assessments imposed pursuant to Mello Roos and other infrastructure financing districts. This bill was amended to provide that if a city or county has an ordinance in place that requires that local entity to repair sidewalks, a repeal of that ordinance would become effective only if the repealing ordinance is approved by the majority of voters voting on that measure in a consolidated or general election. The author would now like to narrow the bill with respect to assessments. He is concerned that without mention of them, the bill is much too broad. APA California suggested clarifications that make clear that, for example, a brownfield development could use an assessment district tool for sidewalk improvements, as could a neighborhood where a majority of property owners wanted to use an assessment district to fund improvements. The author is considering the suggestions.

For an up-to-date list of all bills anytime, log on to the APA California website at www.APACalifornia.com.

Tijuana Walking Tour Allowed Planners to Experience a Rich Urban Landscape

Tour was the first of its kind for APA

By Laurie Gartrell, MCP, Sandag

The City of Tijuana and its planning staff have begun to shape a new image of the border city worthy of positive headlines. In May, Phil Trom (AICP), a senior transit planner for the San Diego Association of Governments (SANDAG) and treasurer for the APA California Planning Foundation (APA CPF), led a group of 30 planners down to Tijuana to experience first-hand the rich urban landscape of the city as it is today and hear about the proposed changes for tomorrow.

While walking tours have been recognized in the industry as a relatively quick, environment-immersion tool, the Tijuana walking tour was unprecedented for APA. The tour was the organization's *first* binational walking tour.

Tour participants came from all over California for a day of bicultural immersion. They ranged from affordable housing planners to transit planners to young students just entering the planning field. Given the diversity of interests involved, the tour incorporated all aspects of urban planning with an international perspective.

Nearly two months of planning and coordination went into designing the tour. Trom, the tour leader, met regularly with members of the SANDAG binational planning staff, who were instrumental in facilitating relationships with the

City of Tijuana and the city's planning agency—IMPLAN (Instituto Metropolitano de Planeación de Tijuana), among other organizations involved in the tour. With the help and cooperation of planners, tour guides, city officials, and binational liaisons, the walking tour morphed into a binational event spotlighting the city as an example of progressive urban development and planning, arts and culture, fine dining, entertainment, and historic preservation.

At the beginning of the tour, participants were provided with Spanish-translation devices (courtesy of a local San Diego non-profit, WALKSanDiego) so they could understand Spanish speakers throughout the tour. The nearly eight-hour tour commenced with an introduction and outline of the day's events. Before crossing the San Ysidro Port of Entry into Mexico, the group was greeted by a City of Tijuana tour guide who remained with the group for the entire trip and provided additional insight and background information along the way. The group visited a few local landmarks, including murals, Plaza Pueblo Amigo, and City Hall, where they were greeted by the Secretary of Urban Development and CEO of IMPLAN, as well as the Mayor of Tijuana, the Hon. Carlos Bustamante.



The group meets with the Mayor of Tijuana, Hon. Carlos Bustamante, and other leading figures at City Hall to discuss current issues and the accompanying planning solutions. Shown above from left to right, amongst the 30 odd walking tour participants, is Daniel Rubio (CEO IMPlan), Jesús Alberto (Police Chief of Tijuana), Juan Borrelli, AICP, Hing Wong, AICP, Phil Trom, AICP (APA CPF Treasurer), Hon. Carlos Bustamante (Mayor of the City of Tijuana), Arq. David Navarro (City of Tijuana's Secretary of Urban Development), Robert Leiter, FAICP (former Land Use and Transportation Planning Director at SANDAG), and Mariano Escobedo (President of the Tijuana Convention and Visitors Bureau)."

Tijuana Walking tour Allowed Planners to Experience a Rich Urban Landscape

Continued from page 22

The group spent time learning about the future bus rapid transit, Zócalo project, and bike planning efforts of Tijuana (including a completed Cíclovia bicycle track along the canal known as the Río), before boarding an open-air bus for a guided look at the urban development taking place today. Highlights of the bus tour included a look at the innovative architecture of the first LEED building in Tijuana, the newly constructed World Trade Center, the country's oldest and largest state park – Parque Morales – and the historic Jai Alai complex. The planners disembarked the bus on La Avenida Revolución and headed to *Caesar's*, home of the original Caesar Salad, where the group indulged in the native dish. During lunch, Ronald Saenz, binational planner for SANDAG, gave a talk about the historical and infrastructural similarities between Tijuana's la Avenida Revolución and San Diego's Fifth Avenue Gaslamp Quarter. Both are vibrant commercial/entertainment districts.

Following lunch, Jack Doron, president of Mexican Tourism (Centurmex), escorted the group down la Avenida Revolución. He highlighted a recent art installation where local artists were welcomed to la Revolución to paint vibrant murals alongside the street's building fronts. The group even stopped to take photos with the historic "zonkeys"— donkeys painted with zebra stripes. Doron led the planners down Sixth Avenue, an increasingly popular nighttime entertainment district for locals. For a brief history of the founding of Tijuana, the group visited the old City Hall location – now home to Tijuana History Museum, Historic Archives, and Municipal Gallery

With the winding down of the tour, the group's last stops included a visit to the historic Mercado Popo (a famous urban market stocked with all of Mexico's rich spices and delicacies), the Guadalupe Cathedral (placed on the City's only car-free street), as well as a look at the well known steel arch—Arco Monumental. After a short bus ride back to the San Ysidro Port of Entry, the group attended one last presentation with a representative from Customs and Border Protection.

With more than 30 million crossings per year, the San Ysidro Port of Entry is the world's busiest land border crossing. Long lines of people wait to enter the United States every day. Planners saw first-hand the many challenges related to border crossings. Once through customs, the group was provided with a detailed outline of proposals to improve the crossing, including the new southbound pedestrian access plan.

The tour provided participants with a new perspective. Many of the planners typically deal with state or national planning issues. During their trip to Tijuana, they experienced international planning with a national context. Though Tijuana is not typically seen as an international archetype for progressive planning, the tour helped to shed light on the innovative and experimental planning taking place there. As the city continues to honor the history of its community, Tijuana simultaneously pushes forward to a more progressive future. By focusing on issues such as air quality, goods movement, border crossing, crime, education, arts and culture, among others, the City of Tijuana will continue to serve as an interesting planning laboratory.

PCR SERVICES CORPORATION
 Environmental Planning & Documentation
 Biological Services
 Air Quality & Climate Change
 Acoustics
 Archaeological & Paleontological Resources
 Historic Resources

Santa Monica
 233 Wilshire Boulevard
 Suite 150
 Santa Monica, CA 90401
 TEL 310.451.4488
 FAX 310.451.5279

Irvine
 One Yostan
 Suite 150
 Irvine, CA 92618
 TEL 949.753.7001
 FAX 949.753.7002

Pasadena
 80 South Lake Avenue
 Suite 570
 Pasadena, CA 91101
 TEL 626.204.6170
 FAX 626.204.6171

www.pcrnet.com

Celebrating 30 Years of Excellence

EMC

EMC PLANNING GROUP INC.
 A LAND USE PLANNING & DESIGN FIRM

Monterey, CA 831.649.1799 www.emcplanning.com

Hogle-Ireland
 Planning & Development Consulting

- General and Specific Plans
- Development Codes
- Community Engagement
- Contract Staffing
- Community Design & GIS
- Environmental Planning

Irvine Riverside Pasadena
www.hogleireland.com

How to Login for the First Time

APA California Chapter members are now able to login to gain access to Members-Only capabilities. Have you forgotten your password? To reset it, or to login for the first time, click on the link "Forgot your Password?" in the lower left area of the homepage; type in the email address APA California Chapter has on file for you, and you will receive an email with your user name and a link to reset your password.





Prepare Plan Preserve: CPF's Fundraising Mission

American Planning Association
California Planning Foundation

Planners are people who value communities and expect to make a difference. This profession depends on diverse and energetic new graduates to continue the work of innovation and excitement that characterizes planning in California. With the rising costs of education, we need your help to ensure that young people who are drawn to planning will be able to fund their education.

The California Planning Foundation (CPF) is a nonprofit, charitable corporation established to further the professional planning practice. CPF achieves this goal by giving annual scholarships and awards to university students in financial need, who have demonstrated academic excellence in planning programs throughout California. Another vitally important CPF activity is the sponsorship of workshops, publications and other continuing educational and professional development programs.

Every year planners attending the annual APA California conference look forward to CPF's auction and raffle. This year's conference in Rancho Mirage is planning to take the auction and raffle to a whole new level. Auction items are affordable opportunities for you to support a great cause and purchase some amazing deals (vacation getaways for a few hundred dollars, entertainment events for under market price, services and resources that you would be paying for anyway), all for a greater purpose. Shop for the holidays, support the next generation of our profession. and enjoy a fun evening with friends. This year promises to be another great venue for the opportunity to bid on a variety of items. While having a fun time participating at the auction, you're helping to raise funds for the serious work CPF undertakes every year to provide scholarships to planning students.

There are several ways to donate items for the auction:

- Individual donations from APA California members, groups, and those who support planning;
- **Become a Friend of CPF.** A donation of \$300 acknowledges you, your group or firm as a CPF supporter and entitles you to your name or firm logo on the CPF website for one year; acknowledgement on a **Friend of CPF** board at the auction and on the auction flier, and acknowledgement during presentation of the CPF Scholarship awards;
- The **Section Challenge.** Each year the eight APA California sections from around the state compete to donate the item that will go for the highest bid at the auction. This honor is memorialized by having the winning Section name inscribed on a plaque presented to the winning Section.

To make a donation, please contact Linda Tatum at ltatum@cityofinglewood.org or by phone at (310) 412-4255, Darcy Kremin at darcy.kremin@urs.com or (510) 874-3110, or contact your local Section CPF Liaison.

Relying on your donations and fundraising activities like the auction, CPF annually awards dozens of student scholarships and memberships in APA. In 2011, due in large part to the success of the record setting auction proceeds at the conference, CPF awarded a record \$50,000 in scholarships!

Additionally, CPF provides professional planning workshops throughout the state so that practicing planners have the opportunity for continuing education and professional development. However, we can't have these programs without your support.

Please make a donation to this year's auction. In addition to donating items like historic maps and books, crowd-pleasers include original photography, tickets to events or shows, bed and breakfast accommodations, and gift certificates to a variety of retail establishments, restaurants, and nature adventures. Original art and craft works are always popular! Our silent auction is always a fun addition to the live auction. So round-up those donations and get them to us as soon as possible as we plan for another successful auction!

See you at the auction and don't forget to bring your cash, checks, or credit card and be ready to have fun while contributing to a great cause!



The Historic Tijuana Jai Alai Palace. Each year CPF sponsors sustainability walking tours fundraisers for our scholarship program. This year, we went to Tijuana, Mexico.



American Planning Association
California Planning Foundation

California Planning Foundation 2012 Frank Wein Scholarship Auction

PLEASE NOTE:

Auction/raffle item descriptions must be submitted by Wednesday, October 10 and delivery of all items must be made to Linda Tatum or Darcy Kremin by 5:00 pm Thursday, October 18 (or 10:00 am on Monday, October 22, if delivery is made at the Conference Site).

CPF 2012 FRANK WEIN SCHOLARSHIP AUCTION DONATIONS

Yes! I'd like to participate as follows: (check appropriate box)

Estimated Value: \$ _____

Please provide complete item description below:

Please contact me for pick-up/drop-off options I will bring item to Rancho Mirage

Monetary Donation of \$ _____ (payable to California Planning Foundation)

Friend of CPF (\$300 - please include business card or website link information)

Name of Company: _____

Address: _____

Phone No. _____ Contact Person: _____ Website: _____

Please return form to:

Linda F. Tatum, AICP
City of Inglewood, 1 Manchester Blvd., Inglewood, CA 90301
310.412.5230 • ltatum@cityofinglewood.org

Darcy Kremin, AICP
URS Corp., 1333 Broadway, Suite 800, Oakland, CA 94612-1924
510.874.3110 • darcy.kremin@urs.com

BECOME A CPF SPONSOR

Planners are people who value communities and expect to make a difference. They often chose to work in jobs that are rewarding but which may not pay very well. The profession depends on new graduates to continue the work of innovation and excitement that characterizes planning in California. We need your help to ensure that young people who are drawn to planning will be able to fund their education.

The California Planning Foundation (CPF) is a nonprofit, charitable corporation established to further the professional practice of planning in California. CPF achieves this goal by giving annual scholarships and awards to university students in financial need, who have demonstrated academic excellence at planning programs throughout California. Another vitally important CPF activity is the sponsorship of workshops, publications and other continuing educational and professional development programs. All members of APA California are automatically members of the CPF. Although APA California members pay annual dues to belong to APA California and the national American Planning Association, there are no separate dues to belong to CPF.

Yes! I'd like to become a Sponsor of the California Planning Foundation: (check appropriate box)

This year, we are looking for individual donors and corporate sponsors to help us continue this important tradition of supporting student planners and CPF activities. For individual donations, please consider becoming an annual "Friend of CPF" by joining or renewing at the level below (please check one):

Friend of CPF - \$300 or more Other Amount - \$ _____ (all CPF donations are greatly appreciated)

For companies and organizations, please consider becoming an annual Sponsor of CPF joining or renewing at one of the levels below, or please consider joining at the Sustaining Level to sponsor a reoccurring CPF scholarship over the next five years (please check one).

Sustaining Level Sponsor - \$5,000 minimum (donation is awarded over the next 5 years)

Platinum Level Sponsor - \$1,500 Gold Level Sponsor - \$1,500

Silver Level Sponsor - \$1,000 Bronze Level Sponsor - \$500

Name of Company: _____

Address: _____

Phone No. _____ Contact Person: _____ Website: _____

Please return form to: Phil Trom, AICP, CPF Treasurer, 13170 Triumph Drive, Poway, CA 92064

Student Sagacity

Planning as Play: A Fun Approach to Planning

By Cindy Ma, LEED AP, APA California Student Representative



Community participation is a fundamental component to the planning process and offers local knowledge that informs and strengthens planning decisions. Through the involvement of the community, people are able to take part in the creation and decision making of their communities. As the planning field evolves, so does the need for innovative and creative participation methods that stretch beyond typical town hall meetings and community workshops.

A fun participation method that has sprung up in the last couple of years is the concept of “planning as play”, as illustrated by urban planner James Rojas’ “Place It!” initiative. Inspired by the idea of learning through art, Rojas developed “Place It” as an interactive participation technique that informs and engages people in the planning process. This form of community participation is a spin on traditional methods and focuses on stimulating the imagination and creativity of people to break the ice and produce insightful and thoughtful ideas.

Unlike traditional community meetings, a “Place It!” workshop consists of mainly play and little to no formal presentations or graphic visuals. Within an hour or so participants are asked to physically build their ideas about a particular planning topic—i.e. their ideal neighborhood, and then share it with the group. To build their ideas participants are provided with a sheet of construction paper and hundreds of randomly collected objects. These random objects include legos, buttons, bottle caps, yarn, and figurines, all collected by or given to Rojas over the years.

Through the use of these random objects, the “Place It!” workshop makes learning about and participating in the planning process a more abstract and fun activity. Participants engaged in the activity can let loose their imagination and feel free to express their ideas without worry of the final depiction needing to be accurately represented. There is no scale and no parameters involved, just paper, objects, and their ideas. The final result is often times an interesting art piece that lends itself to providing the participant with a sense of ownership and investment in the planning process.

In the spring quarter of 2012, James Rojas visited Cal Poly San Luis Obispo as a guest lecturer to share his experience in planning, and the concept of “Place It!”. Rojas’ visit was sponsored by the local APA Central Coast subsection and included a lecture at the Cal Poly campus, a professional mixer, and a students and professionals interactive session. During the interactive session, students and local planning professionals participated in a “Place It” workshop, building their favorite childhood play area. At the end of the session, each participant was given the opportunity to share their product and discuss this method of community participation.

As mentioned before, community participation plays an integral role in the planning process. With the ever-changing demographics of communities and cities, it is important to keep a fresh mind about different ways to engage as much

Students: A Quick Message
About APA California
Conference - ACT NOW!



The APA California state conference coming up fast! This year, the conference is being hosted by the Inland Empire Section at the Rancho Las Palmas Hotel in Rancho Mirage on October 21 - 24, 2012. Although it’s summer, it is never too early to register for the **FREE** student day of Sunday, October 21st. This **FREE** day dedicated to planning students is a great opportunity to students throughout the state, network with planning professionals, and learn about relevant planning issues affecting planning students.

On the schedule for this day are two California Planning Foundation (CPF) sessions and two other sessions. One session will focus on charting a career in sustainability and the other on the changing demographic trends statewide and how they inform local land use planning and public policy. The **FREE** student day also includes a Student Awards Luncheon recognizing CPF award winners. What are you waiting for? Register for the **FREE** day NOW at: <http://www.calapa.org/2012-apa-california-conferen/>. And as always, if you have any questions or comments, please don’t hesitate to contact me at cma03@calpoly.edu.

of the public as possible. With initiatives such as “Place It” and the concept of “planning as play”, community participation can be broadened to address the changing make-up of cities and be a fun and creative planning act!

Commissioner's Corner

Understanding Your Perspective from Behind the Dais

By Marc Yeber, Planning Commissioner Representative, APA California Board of Directors



I have recently been given the privileged opportunity to step into the role of Planning Commission Representative for the California APA Board of Directors. My introduction to the Board came about after expressing my surprise at a seemingly low showing of fellow planning officials at the recent APA National Conference in Los Angeles. I have been an APA member for more than 5 years and am excited with the prospect of being further engaged with the visionaries, leaders and other participants who help shape our neighborhoods and strengthen community character. Although I am entrusted with assisting to serve the general membership, I am particularly tasked with being the voice for California's more than 250 commissioners and board members that are part of the APA membership.

One of my goals is to find more effective ways to communicate with and assist you in your respective roles as decision-makers during the planning and entitlement process. As a Planning Commissioner for the City of West Hollywood and design professional, I have wrestled with the challenges that prevail on both sides of the dais. I have found that connecting with others involved in the planning process to be both helpful and enlightening. One of my goals is to find more effective ways to communicate with and assist you in your respective roles as decision-makers during the planning and entitlement process. The National APA along with the California Chapter and your Local Section has numerous resources and tools including educational materials, training opportunities and numerous networking activities that are right at your finger tips/fingertips. Look to your Local Section to find events and connect with other APA members, even commissioners and board members in your area. I particularly encourage you to reach out to your Local Section Planning Commissioner Representative for assistance and if there is not one, consider volunteering to fill that position. On the state level, aside from updates and resources listed on the Commissioner's page of the APA California website, you will be able to find specific programming designed to meet your needs at the upcoming APA California Conference in Rancho Mirage this fall.

But don't wait until October to get involved. Your perspective from behind the dais could help shape some of the discussion that is currently underway. Further, a conference session is being developed to highlight your point of view as a decision maker with the broader planning community. So please share with me some of the biggest challenges you face before and during a public hearing. How does your personal view of the role as commissioner or board member differ from that of the staff, community, or other stakeholders? What surprises and misconceptions do you regularly encounter? Which aspects make your job easy and which make it difficult?

Regardless of the context, your ideas, opinion and participation truly matter. Please write to me your suggestions, comments, concerns, or even some of your more interesting experiences. If you will be at the conference, please seek me out so that I can have the opportunity to meet you and personally introduce myself. In any event, I hope to hear from you soon, myeber@hotmail.com.

RBF CONSULTING
A Baker Company

Creating value by delivering innovative and sustainable solutions for infrastructure and the environment.

Urban Design/Guidelines • General Plans • Specific Plans
Zoning Regulations • Environmental Assessment
Landscape Architecture • Community Visioning

www.rbf.com • www.mbakercorp.com • 800.479.3808

Ascent Environmental, Inc.

- environmental planning
- natural resources
- air quality and noise
- climate change services

916.444.7301 ascentenvinc.com

BB&K | **BEST BEST & KRIEGER**
ATTORNEYS AT LAW

BB&K is the largest and most experienced full-service municipal and public agency law firm in California. We offer clients unique experience in handling complex planning, building and redevelopment issues.

Offices throughout California, please visit BBKlaw.com

APA California Chapter Broadcasts Information

go! APA California Chapter will be broadcasting important information to your e-mail address. So that you don't miss out on these important messages, please check your e-mail address with National APA. You can review and update your membership information online at www.planning.org. On the home page, go to the Member Services drop-down list and choose the Membership Database link. You will need your membership number which is located on your Planning Magazine label or your dues renewal invoice. Please call 916.773.0288 if you need assistance or further information.

Riverside County, Building Healthier Communities

By Michael Osur, MBA, Deputy Director, Riverside County Department of Public Health and Miguel A. Vazquez, AICP, Healthy Communities Planner, Riverside County Department of Public Health

Who would want to be diagnosed with diabetes or heart disease? No one. If asked, it is unlikely that anyone would voluntarily ask to suffer with conditions that would so negatively impact quality of life. In Riverside County, California, though, two out of every three residents suffer from a condition that has been shown to be a leading cause of both diabetes and heart disease: **obesity**.

To deal with this unhealthy trend, the Riverside County Department of Public Health (RC DOPH) has launched a multifaceted campaign: The Healthy Riverside County Initiative (HRCI). This is a collaborative effort to reduce rates of obesity and chronic disease by encouraging county departments to work together with community partners to support active transportation, physical activity, and help provide access to healthy and affordable foods. Major components include the adoption of the Healthy Communities Element into the County's General Plan, the formation of the Riverside County Health Coalition, and a unique partnership with The California Endowment.

The Healthy Communities Element

The American Planning Association recently released the results of the Planning and Community Health Research Center Survey¹. According to this survey, about 1/3 of cities and counties have incorporated explicit goals, objectives, or policies related to public health in their general plans. Local health departments, however, had little to no involvement in the development of these public health components. Riverside County is the leading jurisdiction working to reverse this trend. The Healthy Communities Element (HCE) is the first optional health-related General Plan Element adopted at a county level in California.

Prepared in collaboration with the Riverside County Planning Department, the HCE is a visionary framework that advances one of the core principles of the planning practice, "to protect public health and safety". It contains indicators and policies traditionally not found in typical General Plan Elements such as social capital, access to healthy foods and nutrition, health care and mental health, and schools, recreational, and day care centers.

The HCE is a tool that promotes healthy communities and behaviors beyond county offices and the Planning Department. The HCE, along with the Board of Supervisors Healthy Riverside County Resolution are the guiding policy documents that will lead to a healthier Riverside County and become an example for other jurisdictions.

Riverside County Health Coalition

Created under the HRCI, the Riverside County Health Coalition (RCHC) is a public/private partnership with the



mission of promoting, improving, and sustaining social and physical environments for healthy eating and active lifestyles for wellness through policy development and advocacy, environmental change, and community empowerment. To fulfill its mission, the coalition gathers, supports and mobilizes partners from multiple domains, provides leadership and vision, and coordinates countywide efforts in the promotion of healthier living throughout the county. Members represent both public and private sectors including other County agencies (e.g., Office on Aging, Department of Public Social Services, Environmental Health, and Planning Department), school districts and colleges (e.g., University of California Cooperative Extension, Moreno Valley Unified School District, Palm Springs Unified School District, Riverside Unified School District), and local and regional foundations (e.g., Kaiser Permanente, The California Endowment, Riverside Community Health Foundation, Foundation for Community and Health, Regional Access Project). Members also represent community businesses (e.g., Healthy Heritage Movement, Inc), local cities (Coachella, Riverside and Corona), local health clinics and medical organizations (e.g., Clinicas de Salud Del Pueblo, Desert Regional Medical Center, Riverside County Medical Association, and Borrego Community Health Foundation) and local Medi-Cal managed health care plans (Inland Empire Health Plan). Local coalitions (HEALNet Project, Inland Empire Breastfeeding Coalition, Riverside County Nutrition Action Plan and Unity Coalition), regional organizations (e.g., American Heart Association, Find Food Bank) and interested members of the community are also active in RCHC. A partner of particular relevance is The California Endowment, the foundation supporting an innovative approach to enhancing quality of life in the eastern Coachella Valley.

Eastern Coachella Valley - Building Healthy Communities

Coachella Valley (CV) is famous for its music festival, its date farms, extreme heat, and communities with exotic Mesopotamian names like Mecca. The annual music festival draws acts like Dr. Dre, Snoop Dogg, and Radiohead; but what most people don't know is that students from the three CV schools districts are less likely than students countywide to be scholastically prepared for entry into a University of California or California State University

Riverside County, Building Healthier Communities

Continued from page 28

campus (25% vs. 29%). Additionally 35% of 5th, 7th and 9th grade students were considered to have an unhealthy body weight and that more residents live in poverty than the countywide average (15.2% vs. 12.3%)². These health equity issues are some of the indicators that could be used for targeting programs to reduce healthy inequities and drafting policies to enhance overall quality of life.

Along with the challenges described above, many other health, social, and environmental indicators are magnified in the eastern part of the valley. As a



direct recognition of these challenges and inequities,

The California Endowment (TCE) has embarked on a ten year multimillion dollar program branded as Building Healthy Communities (BHC) to assist in the reversal of these trends. BHC is a “*plan to improve health in 14 underserved, geographically and ethnically diverse communities throughout California. Youth and adult residents, leaders, organizations, schools, business, health care, law enforcement and other sectors in each of these communities are working together — something that hasn’t happened before — to take a holistic approach to improve both community and individual health. The ultimate goal: building communities where children are healthy, safe, and ready to learn.*” The targeted area is the Eastern Coachella Valley (ECV), which encompasses the city of Coachella and the unincorporated communities of Thermal, North Shore and Mecca.

BHC-ECV collaboration is in full swing now. Grantees and other non-funded organizations are focusing their efforts on three main outcomes:

- Residents live in communities with health-promoting land use, transportation, and community development.
- Communities support healthy youth development.
- Neighborhood and school environments support improved health and healthy behaviors.

RC DOPH is one of the grantees working on this community capacity building strategy. The funding has allowed RC DOPH to

hire a full-time urban planner to support implementation of the land use and transportation strategies and to work along with the City of Coachella’s planners as they prepare the Health and Wellness Element, a key component of the City’s General Plan Update. The grant also permits the RC DOPH to provide technical assistance for the inclusion of “health in all policies” into each of Riverside County’s incorporated cities’ General Plans. As part of RC DOPH’s current efforts to improve the built environment, DOPH is organizing a workshops for planners in our region to provide tools and knowledge about the intersection of health and planning. For example, early this year, a workshop on integrating health policies into the General Plan was conducted in collaboration with Raimi+Associates, the consultant working with the City of Coachella and a consultant on the HCE at Riverside County. Workshop participants included planners, engineers, elected officials, planning commissioners, and other community partners. The event was sponsored by TCE and RCHC, co-hosted by the Western Riverside Council of Governments and supported by the Inland Empire Section of the American Planning Association that provided certification maintenance credits for members of the American Institute of Certified Planners.

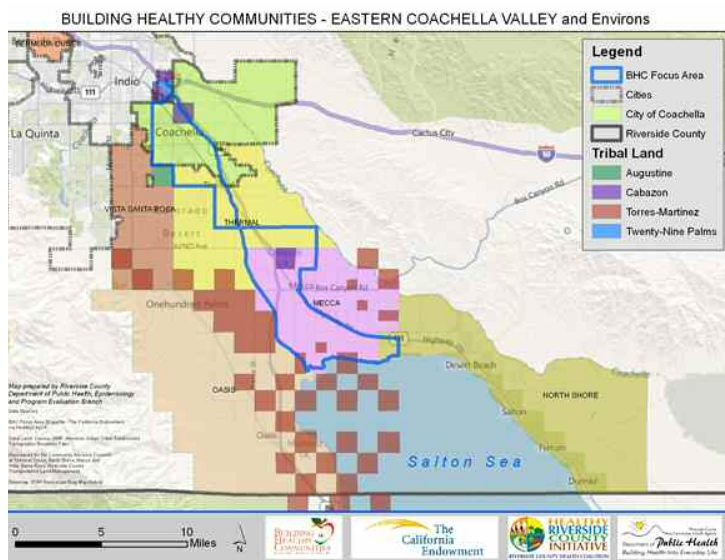
Should Health Indicators drive the planning practice as we move into the future?

The results of an informal online poll revealed that planning professionals would like to see health indicators as the future drivers of planning (66% of the 53 responded yes to the question)³. A healthy economy, a healthy environment, a healthy transportation system, and health in all policies are keys to improving the community’s health. To propel these health concepts into the planning profession, Health Departments across the State of California are beginning to collaborate with planning agencies in our mutual quest to build healthy communities with healthy people.

For more information about this article please visit www.healthyrivercounty.org

The Inland Empire Section of the American Planning Association recently honored the Riverside County Department of Public Health with three awards:

- Distinguished Leadership Award: Riverside County Department of Public Health;
- Distinguished Leadership Citizen Planner/Layperson Award: Michael Osur, Deputy Director
- Award of Merit for Best Practices: Healthy Communities Element (done in collaboration with the Riverside County Planning Department and Raimi+Associates).



¹ APA Comprehensive Planning for Public Health Survey. Report, 2011, <http://www.planning.org/research/publichealth/pdf/surveyreport.pdf>

² 2011 Riverside County Community Indicators Report, The Community Foundation

³ Linked In on-line Poll. Should Health Indicators drive the planning practice as we move into the future? March, 2012. <http://linkd.in/Ai7Ea3>

Sustainable Integrated Planning: Candlestick Point - Hunters Point Phase II

By Alison Rondone, Senior Project Manager, Atkins North

Contributor: Therese Brekke, CEQA Project Manager, Lennar Urban

What began more than three decades ago as a vision for revitalizing a blighted and underserved community in the City and County of San Francisco, the Candlestick Point—Hunters



Point Phase II Project reached an important milestone in July 2010 – the certification of the environmental impact report (EIR) for the Candlestick Point—Hunters Point Phase II Project and project approval. The EIR process, led by Atkins North America, was unusually difficult not only with respect to a Mayoral-mandated schedule, but because it needed to engage all relevant stakeholders – the Bayview Community, California State Parks, and the U.S. Navy. Other factors that made the process difficult included a commitment to preserving the fledgling artists' colony on the closed Shipyard and the knowledge that all decisions about methodology, assumptions, and forecasts were certain to be scrutinized by a range of local attorneys as well as the Board of Supervisors. The process required extensive coordination with the U.S. Navy and to ensure seamless integration of the Shipyard cleanup process and protection of the Candlestick Point State Recreation Area. This included developing the EIR in such a way that the Navy and State Parks could easily include portions of the CP-HPS Phase II analysis in environmental documents that they were separately preparing.

The project, a result of collaboration between the City and the San Francisco Redevelopment Agency, and Lennar Urban, the horizontal developer of the site, is a model of integrated planning incorporating the principles of sustainability, and is expected to break ground in mid 2013. The site is located on 702 acres in southeastern San Francisco and includes Hunters Point Shipyard, a Superfund site, the San Francisco 49ers Candlestick Park stadium, Candlestick Point State Recreation Area, and the Alice Griffith public housing development. With more than 30 years of public outreach, hundreds of community meetings, and

several ballot initiatives, it became clear to all involved that the project must produce tangible community benefits for the Bayview-Hunters Point community and the City as a whole. Some of the community benefits include:

- Creation of permanent space in the Shipyard for the existing artists' colony
- Transforming contaminated Shipyard property into economically productive uses and public open space
- Rebuilding existing substandard public housing with new, upgraded homes without relocating tenants
- Creating a range of job and economic development opportunities for local, economically disadvantaged individuals and business enterprises
- Enhancing public access to the waterfront and enjoyment of the
- Providing much-needed vehicular and pedestrian connections between the project area and the rest of the City



Since approval of Phase II, Lennar Urban's team has been busy preparing the major phase application for the first two areas to be developed—Parcel B, adjacent to Phase I (a 75-acre site north and east of Phase II planned for 1,600 homes), and Alice Griffith public housing. When submitted, the application will include the infrastructure, transportation, and parks and open space plans, conceptual drawings, and tentative and subdivision maps for the two areas. Lennar is also now completing the architectural drawings for the artists' building, a key first step in implementation of the project.

The overall development plan has been and continues to be governed by the principle of adjacency—that is, the area next to Phase I will occur first, with subsequent development wrapping around the waterfront until the entire site is complete, with the exception of the Alice Griffith housing, which is tied to the

Sustainable Integrated Planning: Candlestick Point - Hunters Point Phase II

Continued from page 30

development of Parcel B by agreement with the City. Parks and other community amenities will be developed concurrent with construction of the individual parcels. This will ensure that the site is developed in an orderly fashion and that community amenities are available to serve the parcels as they are occupied.



Simultaneously, the Lennar Urban team is preparing a streetscape plan with concepts for lighting, landscaping, paving, and pedestrian amenities. Also during this period, required permits will be obtained for all shoreline improvements from the Regional Water Quality Control Board, U.S. Army Corps of Engineers, and the Bay Conservation and Development Commission.

Subsequent to project approval, the Alice Griffith Housing rebuild component received a \$30 million grant from the U.S. Department of Housing and Urban Development. And, although the San Francisco Redevelopment Agency ceased to exist as of February 1, 2012, implementation of the project remains assured through enforceable obligations in the Disposition and Development Agreement between Lennar Urban and the City and and County of San Francisco.

Atkins North America provided a comprehensive and technically complex EIR (consisting of ten volumes) for this important and contentious project in one year. While subject to litigation, the EIR certification and project approvals were ultimately upheld. The document was well received and acknowledged as the model environmental document by the San Francisco Planning Department. Of major note, the EIR won local and national awards, including the American



Council of Engineering Companies *Award of Excellence* and three awards from the American Planning Association (APA) – the *2011 Northern Section Award*, the *2011 California State Award*, and the *2012 National Award*, all for *Hard-Won Victories*, the last of which was presented at the April 2012 National APA Conference in Los Angeles.

STANLEY R. HOFFMAN
ASSOCIATES

Economic, Fiscal and Financial Studies

11661 San Vicente Blvd., Suite 306, Los Angeles, CA 90049
Phone: 310.820.2680 • Alameda Office: 510.522.1129
www.stanleyhoffman.com

SWCA
ENVIRONMENTAL CONSULTANTS
Sound Science. Creative Solutions.

- CEQA / NEPA
- Environmental Planning
- Environmental Compliance
- Biology
- Archaeology and Paleontology
- Climate Change and Sustainability Services

Half Moon Bay 650.440.4160
Pasadena 626.240.0587
San Luis Obispo 805.543.7095
www.swca.com

MELÉNDREZ

**Landscape Architecture,
Urban Planning & Urban Design**

James Oviatt Building, 11th Floor
617 S. Olive Street, Los Angeles, CA 90014
(213) 673-4400 www.melendrez.com

bae
urban economics for sustainable development
bae1.com

san francisco 510.547.9380
sacramento 530.750.2195
los angeles 213.471.2666
new york 212.683.4486
washington dc 202.588.8945

BonTerra ENVIRONMENTAL PLANNING
CONSULTING RESOURCES MANAGEMENT

Irvine: (714) 444-9199
Pasadena: (626) 351-2000
www.BonTerraConsulting.com

Heffernan Professional Practices
Specialists in Insurance for Planners.

Marsha Bastian Account Executive
marshab@heffins.com

heffins.com
714.919.4230
Orange, CA

Year with No Winter: A Volunteer Planner's Experience in the Developing World

Part 2 of a 3 Part Series

By Mark G. Stephens, AICP

Part 1, <http://www.calapa.org/attachments/contentmanagers/63/CalPlannerSpring2012.pdf>, of this three-part series was published in the Spring issue of California Planner. Part 1 The first installment explained how the author learned about and pursued a volunteer posting as a planner in Zambia through Cuso International and Voluntary Service Overseas (VSO), and presented an overview of the country and its people. Part 2 in this issue describes planning in Zambia, integrated development planning and proposed legislation, and the author's volunteer experience with the Petauke District Council. Part 3, to be published in the Fall issue, will conclude with observations on lessons learned and sources of additional information.

Planning Framework

Reflecting the influence of Great Britain in the region, the seminal planning enabling legislation is the Town and Country Planning Act. Planning is more centralized in Zambia than the U.S., as is the case in many other countries. To provide a long-term perspective, *Vision 2030* was produced by the national government in late 2006, and expressed the aspiration for Zambia to become “a prosperous middle-income nation by 2030.” The national government produces mid-term, five-year national development plans through the Ministry of Finance and National Planning. The *Fifth National Development Plan (2006-2010)* was in effect when I arrived in the country, with the *Sixth National Development Plan (2011-2015)* being finalized. The theme of the latest plan is “sustained economic growth and poverty reduction.”

Development plans are also produced at the provincial level and the district level. While the various development plans contain a good deal of information and provide a planning framework, they generally lack a spatial component. This creates a weak link between land use planning and public facility planning, economic development and social programs. The development planning process also tends to be “top-down” in nature, which impedes local public participation and buy-in. In addition, the projects identified tend to represent a “wish list” as opposed to resulting from a systematic process with clear selection criteria and priorities.



Zambia, Map No. 3731 Rev. 4, January 2004. This map is printed with permission of the United Nations.

Zambia has a “dual system” of laws. “Statutory law” is based upon the laws enacted by the National Assembly. Relative to land, it establishes a system for the Ministry of Lands to allocate state land through long-term leases. “Customary law”, based upon the traditional tribal system, allows traditional chiefs to allocate land in their own areas. Inequities and inefficiencies in land allocation, not to mention conflicts between the two systems, are a major challenge and pervasive concern.

“Layout plans” are drafted to identify individual plots for allocation through a convoluted process under statutory law that still requires approval by the central government. While such layout plans have numerous limitations, they sometimes represent the best mapped information available.

Back to the Future

Continued from page 32

With barriers to acquiring land, constrained availability of housing and public services, and severely limited enforcement, establishment of unplanned, informal settlements on the periphery of urban and urbanizing areas has been another pervasive issue. The Housing Act has allowed such “squatter settlements” to be recognized and upgraded through clarification of land records and provision of basic services.

Recognizing the need to bring government closer to the people, providing citizens with more control over decision-making, and expanding direct participation in public service delivery, the national government adopted a *National Decentralization Policy in 2002* and approved a *Decentralization Implementation Plan* in 2009 (or “decentralisation” in the English spelling convention employed in Zambia – “programme” and “centre” are among other different spelling conventions used). Efforts to inform and empower local citizens, and particularly disadvantaged groups, mesh well with VSO’s philosophy and programs.

Integrated Development Planning & Proposed Legislation

To address planning and development needs arising from constrained resources, antiquated legislation, institutional and informational shortcomings, coordination gaps, and a rapidly growing population, alternative planning models and approaches were investigated in recent years. In South Africa, an “integrated development planning” process had proven successful. It focused on public engagement, better coordination and integration of different sectors, more efficient use of resources, and a more “bottom-up” approach.

In the absence of specific legislation, the Zambian Ministry of Local Government and Housing developed guidance and provided resources to foster preparation of integrated development plans (IDP’s). The steps for preparing an IPD include:

- Inception Report setting forth the scope of work
- Status Quo Report containing an inventory and analysis
- Spatial Development Framework
- Final Integrated Development Plan

IDP’s must ultimately be approved by the local jurisdiction and the Ministry of Local Government and Housing. In practice, some areas have relied on the Ministry of Local Government and Housing to manage the process, while others have relied more on local staff, volunteer experts, private consultants, or some combination of resources.

A proposed Urban and Regional Planning bill has been drafted through a broad consultation process with the help of outside planning experts. This legislation would modernize



Petauke public market scene. Photo by Mark G. Stephens, AICP

Zambian planning law, institutionalize the integrated development planning process, formalize a more participatory approach, introduce consideration of sustainability, and grant planning authority to district councils, among other landmark changes. VSO volunteers and volunteers from other similar organizations have participated in varying ways in integrated development planning efforts. The VSO efforts have emphasized local public involvement and capacity-building, focusing on urbanizing areas and a streamlined process that uses fewer resources more efficiently and stresses results as opposed to encyclopedic inventory documents.

A proposed companion piece of legislation, an Urban and Regional Planners bill, would address the dearth of professionally trained planners and standards, and require that qualified and registered planners sign off on key steps in the revised planning process. One of the VSO volunteers, Peter Cockhead, a veteran planner from Scotland, has also served as an advisor to the Ministry of Local Government and Housing, and fostered coordination and information exchange among volunteer planners and GIS (geographic information system) specialists from VSO and other organizations based in Germany and Japan that are active in Zambia.

My Volunteer Experience

My trip to Zambia was daunting. I flew overnight from San Francisco to London, and then connected to a second overnight flight from London to Lusaka. Several other volunteers heading to Zambia, including the person sitting next to me, were on the Lusaka flight. In all, 17 volunteers arrived and were met at the airport by representatives of the VSO Zambia Program Office.

Including a few others arriving on different flights, volunteers came from locations as diverse as England, Ireland,

Continued on page 34

Back to the Future

Continued from page 33



Petauke District Council offices, headquarters for a local government serving over 300,000 residents. Photo by Mark G. Stephens, AICP

Wales, the Netherlands, Uganda, India, Australia and the United States to begin their placements. VSO Zambia Program office representatives took us to our base for an introductory week of orientation at the Commonwealth Youth Program facilities on the University of Zambia campus in Lusaka. The orientation week culminated in individual meetings with representatives from the organizations where volunteers would be working, and volunteers were taken to their placements the following day.

My destination was the Petauke District, one of eight districts in the Eastern Province. Petauke District is about 11,000 square kilometers (around 4,250 square miles) in area, with a population of almost 338,000. Petauke township, the main service center in the Petauke District, is located just north of the Great East Road, a paved highway that connects to Lusaka about 400 kilometers to the west, and Chipata, the capital and largest city in the Eastern Province, around 170 kilometers to the east.

Living accommodations were provided by the Petauke District Council. The town center (known locally as the “boma”) and the District Council offices are located about 5 kilometers from the Great East Road. The District Council owns and operates the Nyika Motel, located about 4 kilometers from the office. Ten small houses, originally intended mainly for motel employees, are located adjacent to the motel. One of these was refurbished to provide accommodations for the two new VSO volunteers, a delightful young Dutch volunteer named Ity Hogeveen and me. The house had separate bedrooms, a living room, kitchen, and bathroom facilities.

At the time, the Petauke District Council had 22 councillors (that’s the local spelling) elected from smaller sub-districts called “wards”, three members of the National Assembly (Parliament) elected from geographic areas in the district called “constitue-

ncies”, and two chief’s representatives nominated by traditional tribal chiefs, for a total of 27 councillors. Regular meetings are generally held quarterly, and the District Council has several committees through which most matters are channeled. Council meetings are more formal than I had anticipated. The national anthem is sung (it’s quite melodic) and a prayer is delivered at the outset and to close sessions. The councillors wear robes, and if one enters or leaves the room during the proceedings, they make a respectful bow toward the dais.

An appointed Council Secretary serves as the District Council’s administrative head, and several department heads and other managers make up the management team. The District Council has approximately 100 employees. Planning functions are shared among a District Planning Office that is generally responsible for socioeconomic planning and a Works Department that has main local responsibility for land management, public works, processing of specific projects, fire safety and enforcement. At the district level, an Eastern Province Planning Authority staffed by the Ministry of Local Government and Housing still retains authority for review and approval of most specific development projects and plans. My primary counterparts were Dulani Phiri, the District Planning Officer, and Betram Daka, the Director of the Works Department.

Another important entity is the Petauke District Development Coordinating Committee. The Committee is chaired by the District Commissioner, the national government’s lead representative in the district, and the membership is composed of a variety of stakeholders. The District Commissioner’s office coordinates the central government’s activities in the district, and provides a liaison with the local District government. The District Development



Presenting local workshop results. Photo by Mark G. Stephens, AICP

Continued on page 34

Back to the Future

Continued from page 34

Coordinating Committee is also responsible for preparation and implementation of the *Petauke District Development Plan*.

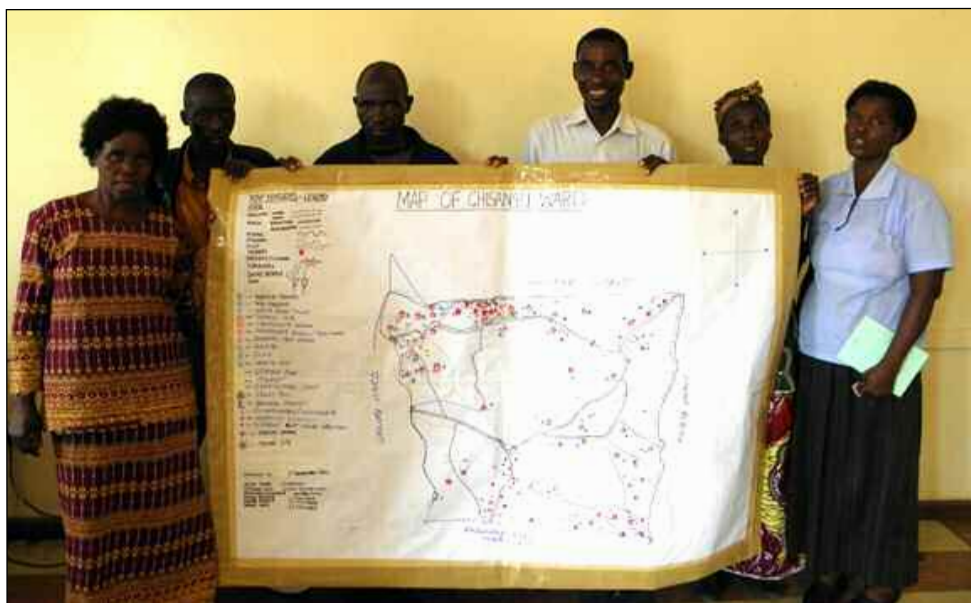
The Petauke District Development Plan (2011-2015), updating and revising the previous five-year plan, was well under way when I reached Zambia. In addition to the oversight provided by the District Development Coordinating Committee, decentralization efforts included involvement of “area development committees” representing each ward.

With VSO volunteer support, the Petauke District Council secured a substantial grant from the European Union to implement a Petauke District Democracy and Good Governance Program over two years. David Dawson, a long-time VSO volunteer working as the Decentralization Advisor, had an instrumental role in this program. (David also married a wonderful local woman, Mercy, and has become a real Zambian!) The program emphasizes empowering local communities and increasing local capabilities, accountability and transparency.

The Nyika Ward, which includes the Petauke township, has a population of just over 36,000 according to the 2010 Census preliminary results. This is only a little more than 10% of the overall Petauke District 2010 population, reflecting the region’s predominantly rural character.

One of my first challenges was to work with the District Council in adapting the volunteer placement outline to create a work program for my six-month assignment. The work program focused on initial steps in preparing an Integrated Development Plan for the Petauke District and developing basic tools to assist planning for the urbanizing Petauke township.

As part of the Petauke District Democracy and Good Governance Program and to help lay ground work for integrated development planning, representatives of area development committees for each of the wards making up the Petauke District participated in a series of three-day workshops. To ensure broad representation, committee members were invited from each “zone” (wards are divided into five to seven zones) within the various wards, and a target of at least 40% female participants was established. Elected councillors from the respective wards were also invited in response to a suggestion following the initial workshop. The participants created large schematic maps of their wards, showing ward and zone boundaries, the location of villages, roads, natural features such as hills, rivers and streams,



Workshop participants with the map they produced.. Photo by Mark G. Stephens, AICP

and a wide array of public facilities focusing on the water and sanitation, health, education, and agriculture sectors. The general condition of these public facilities was also indicated. In addition, the attendees began to identify problems confronting their wards to address as priorities. Attendees presented the results of their work, and translation was provided as needed. More than compiling maps, the workshops conveyed information and skills that could be shared. Over 100 participants took part in eight workshops covering all wards. My role included assisting the workshop design, presenting information about planning and mapping, serving as a facilitator, and advising on next steps.

For the more urbanized Petauke township area, producing a consolidated base map that could be easily understood and used was identified as a fundamental need. In coordination with technical advisors for the Ministry of Local Government and Housing in the Eastern Province, I assisted efforts to secure a high resolution satellite image of the township and expected future expansion areas, along with software to allow automated mapping efforts. Other intended uses of the base map include consolidating information from different layout plans, verifying land use and public facilities locations, integrating a simple land records system with mapping, and planning for future expansion areas.

An unforgettable activity apart from the planning realm was assisting Ity, my fellow volunteer and housemate, in creating the first Petauke Sports Day for local students one Saturday. This included setting up what may have been the first volleyball court ever in Petauke and great fun was had by all.

The third and final installment will appear in the Fall issue of Cal Planner.