

Section 2.07

(95021-033151)

8" Gauge Hatch

- Equipment Summary Form
- Data Sheet
- Instruction Manual
- Drawing



BIOGAS
SHAND & JURTS

an **L&J TECHNOLOGIES** company

EQUIPMENT SUMMARY FORM

1. EQUIPMENT ITEM 8" Gauge Hatch
2. MANUFACTURER L&J Technologies
3. EQUIPMENT IDENTIFICATION NUMBER(S) 95021-033151
(maps equipment number)
4. LOCATION OF EQUIPMENT _____
5. WEIGHT OF INDIVIDUAL COMPONENTS (OVER 100 POUNDS) 16 lbs. (Approx.)

6. NAMEPLATE DATA - Horsepower _____
Amperage _____
Voltage _____
Service Factor (S.F.) _____
Speed _____
ENC Type _____
Capacity _____
Other _____
7. MANUFACTURER'S LOCAL REPRESENTATIVE
Name Misco Water
Address 27101 Burbank, Suite B, Foothill Ranch, CA, 92610
Telephone Number 949-458-5555
8. MAINTENANCE REQUIREMENTS Visual inspection annually, replace soft goods
every 5 years, clean as needed.

9. LUBRICANT LIST N/A

10. SPARE PARTS (recommendations) Seal Ring (Buna) (9502-11135)

11. COMMENTS _____

95021 Gauge Hatch

The Shand & Jurs 95021 Gauge Hatch is designed to provide easy access to storage tanks for gauging product level or temperature and product sampling.

It is available in a range of sizes from 4" through 12", and can be ordered with one of the two optional clamp covers. Maximum working pressure for the clamped cover versions is 3.0 psig.

The standard hatch features a foot opening cover, flexible sealing member and tape gauge marker.

Clamp down covers are available in either the traditional screw-down or the revolutionary "Quik-Clamp" Cam Lock. The "Quik-Clamp" allows the operator to open the hatch with his feet, eliminating the need to remove work gloves or set down hand tools. This feature is also very useful in cold environments or when dealing with hazardous products.

An optional S-hook for suspending a thermometer or sampler is available.

Materials of construction include aluminum, steel, 316 stainless steel and bronze.

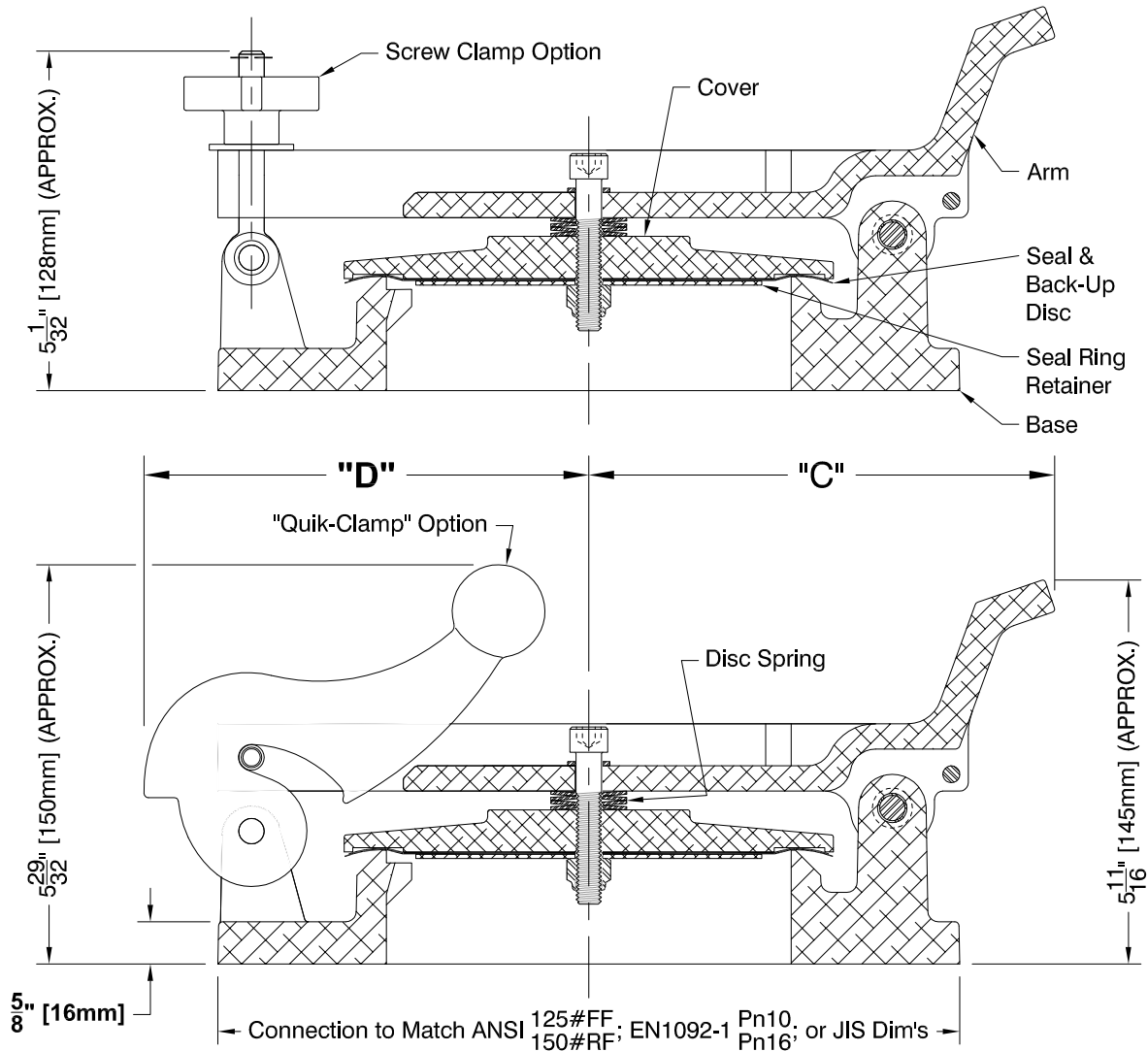
For spark resistant design, specify ATEX option.



Features

- Easy access for product gauging or sampling
- "Quik-Clamp" option allows for hands-free operation
- Available in sizes from 4" to 12"
- Materials of construction include aluminum, ~~steel, 316 SS, and bronze~~
- Teflon diaphragm ensures safe tight seal
- Maximum working pressure 3 PSIG (clamped only)

Dimensions



| Size | Inlet Diameter | Flange "D" | "C" | "D" |
|------|-----------------------------|------------------------------|------------------------------|------------------------------|
| 4" | 4" (102 mm) | 9" (229 mm) | 5 $\frac{29}{32}$ " (150 mm) | 5 $\frac{19}{32}$ " (142 mm) |
| 6" | 6" (152 mm) | 11" (279 mm) | 6 $\frac{29}{32}$ " (175 mm) | 6 $\frac{19}{32}$ " (168 mm) |
| 8" | 8" (203 mm) | 13 $\frac{1}{2}$ " (343 mm) | 7 $\frac{29}{32}$ " (201 mm) | 7 $\frac{27}{32}$ " (199 mm) |
| 10" | 10" (254 mm) | 16" (406 mm) | 8 $\frac{29}{32}$ " (226 mm) | 9 $\frac{3}{32}$ " (231 mm) |
| 12" | 11 $\frac{3}{4}$ " (299 mm) | 19 $\frac{5}{16}$ " (491 mm) | 11 $\frac{1}{4}$ " (286 mm) | 10 $\frac{1}{4}$ " (260 mm) |

All designs subject to change. Certified dimensions and specifications available upon request.

95021 Ordering Guide

Model Number Selection

The model number will consist of a base number **95021** followed by 6 digit numbers. These digits will represent 6 option tables.

95021 - AB - CD - EF

Ordering Information

Specify:

1. Model 95021 Gauge Hatch
2. Size
3. Connection Type*
4. Clamping Cover Style
5. Material

6. Specify S-hook if required

7. Locking Option

8. Specify CE for Ordinary EU Locations; use Table E2 and E3

9. ATEX Certification for Group IIB, IIA EU Locations; use Table E4 and E5

*Note: Threaded adaptors and other connection types are available for all sizes. Please consult the factory for pricing and availability.

Table A - Connection

| Option A | Description |
|----------|------------------------------|
| 0 | ANSI 150 lb. FF Bolted |
| 1 | ANSI FF 150 lb. FF Undrilled |
| 2 | ANSI* 150 lb. RF* Bolted |
| 3 | EN1092 PN16 FF Bolted |
| 4 | EN1092 PN16 RF* Bolted |
| 5 | JIS 10K FF Bolted |
| 6 | JIS 10K RF* Bolted |
| 7 | Steel, NPT |
| 8 | Aluminum, NPT |
| 9 | Stainless Steel, NPT |

*RF not available in Aluminum and Bronze

Table B - Size

| Option B | Size |
|----------|------|
| 1 | 4" |
| 2 | 6" |
| 3 | 8" |
| 4 | 10" |
| 5 | 12" |

Table C - Softgoods

| Option C | Description |
|----------|---|
| 0 | FEP Teflon with N8090 Back-Up Disc |
| 1 | FEP Teflon with GPTFE Back-Up Disc |
| 2 | VITON (Back-Up Disc Not Required) |
| 3 | Buna-N (Back-Up Disc Not Required) |
| 4 | EPDM (Back-Up Disc Not Required) |
| 5 | TCF with GPTFE Back-Up (For HI TEMP 500°F MAX) |

N8090 - Nitrile Fiber Composite, TCF - Teflon Coated Fiberglass

GPTFE - Glass Filled Teflon

Table D - Clamping Type

| Option D | Description |
|----------|----------------------|
| 0 | Unclamped |
| 1 | Screw Down |
| 2 | Quick Clamp |
| 3 | Unclamped Side Mount |


Table E - Locking Provisions


| Option E | Description |
|----------|---|
| 0 | Standard No Lock |
| 1 | Locking On Quick Clamp / Screwdown |
| 2 | CE and no Lock |
| 3 | CE and Lock Quick Clamp / Screwdown |
| 4 | ATEX Certified - No Lock |
| 5 | ATEX Certified - Lock Quick Clamp / Screwdown |


Table F - Body Material

| Option F | Body Material |
|----------|---------------------|
| 0 | Steel |
| 1 | Aluminum |
| 2 | 316 Stainless Steel |
| 3 | Bronze |

Periodically throughout this manual, the words Danger, Warning, Caution and Note may occur. These are reminders to be especially careful. See the descriptions below for more details on what each word denotes.

| |
|---|
|  DANGER |
| Indicates an imminently hazardous situation which, if not avoided, "will" result in death or serious injury. This word is limited to the most extreme situations. |


| |
|--|
|  WARNING |
| Indicates an potentially hazardous situation which, if not avoided, "could" result in death or serious injury. |

| |
|--|
|  CAUTION |
| Indicates an potentially hazardous situation which, if not avoided, "may" result in minor or moderate injury, or damage to the instrument being worked on. |

! **Note:** Is meant to add some measure of help or give useful information to the person working on the instrument.

Safety Instruction Addendum

Before installation these instructions must be fully read and understood.

| |
|---|
|  SAFETY WARNING |
| <p>It is important to take the following precautions before you start work on the vent</p> <ol style="list-style-type: none"> 1. Personnel installing or performing maintenance to the hatch must be competent and utilize approved equipment and clothing normally used to work with the process media where the hatch is installed. 2. The tank the hatch is installed on, must be at atmospheric pressure conditions and free of hazardous vapors . 3. Handling of the hatch must be done by personnel trained in all aspects of manual and mechanical handling techniques. |

Forward

The Shand & Jurs Model 95021 Gauge Hatch is in conformance with the requirements EC Directive 98/37/EC Machine Safety and EC Directive 94/9/EC Assessment when installed and maintained in accordance with these instructions and Instruction Manual 95-021-20.

ATEX CERTIFICATION: CE 0359 Ex II 1 G, IIB; CERTIFICATE: ITS 04ATEX12487
Construction in accordance with EN13463-1-2001

Storage/Protection/Selection/Spare Parts

Storage

When Shand & Jurs Hatches are to be stored prior to being installed, storage should be in the original shipping crates with any waterproof lining and/or desiccant remaining in place. Storage should be off the ground in a clean, dry, indoor area.

Protection

Shand & Jurs Hatches are delivered with protection as required by customer specifications or the Quality Assurance Manual.

Spare Parts

Shand & Jurs Hatches are identified by the model and serial numbers stamped on the nameplate. Record the model and serial numbers and refer to them when ordering spare parts from the local Shand & Jurs representative or the factory.

Selection

Verify that the hatch has an ATEX nameplate attached to it. ATEX certified model numbers and options are listed in the table at the end of this addendum. Verify that the materials of construction are compatible with the media in the tank.

Installation

Preliminary

The tank and mounting flange must be fully painted on steel tanks. No corrosion is permitted.

Pressure Setting

The pressure relief setting of these Hatches depends on the weight of the cover. The pressure setting is not factory calibrated.



WARNING

This device should be kept clear of excessive snow and ice build up or other debris which may interfere with it's operation.

Site Preparation



WARNING

The mounting flange and tank must be free and protected from corrosion. No rust is permitted. Impact between aluminum and rusty steel is a spark hazard. Sparks can cause explosion.

Equipment

This hatch has an exposed metal seat when the cover is lifted. Use proper equipment to prevent damaging the seat. Lift the hatch by the base only.

Grounding

WARNING

To minimize ESD spark risks, this hatch **MUST BE** Earth grounded. If this is not accomplished by installing the vent on its mounting pipe, a cable must be attached to the hatch and Earth grounded. Sparks can cause explosion.

Commissioning/Testing

It is dangerous to people to be in the vicinity of the vent when it may relieve pressure in the tank. Be sure nobody is near the hatch when it is expected to relieve pressure in the Tank.

Operation

Relieving

No one should be near the vent when it can relieve pressure in the tank.

WARNING

A **LOUD** sound may be generated when the tank is relieving. Caution should be exercised by people located within hearing distance of the vent.

Maintenance

Inspection

The vent must be inspected periodically for corrosion or damage. This should be done frequently initially until a pattern can be established from experience as to how often the vent should be inspected. Vents with aluminum pallets and steel bases require special attention to the condition of the diaphragm where it touches the base. Be sure there is no damage. If the diaphragm has deep indentions or perforations, it must be replaced. For Further Maintenance Recommendations see Instructions 95-021-20.

WARNING

If the diaphragm and/or back-up disc are damaged and permit the aluminum pallet to touch the steel base, sparks **MAY** occur and cause an explosion.

Model 95021 GAUGE HATCH

MODEL NUMBER & OPTION DESCRIPTIONS

95021 - AB - CD - EF

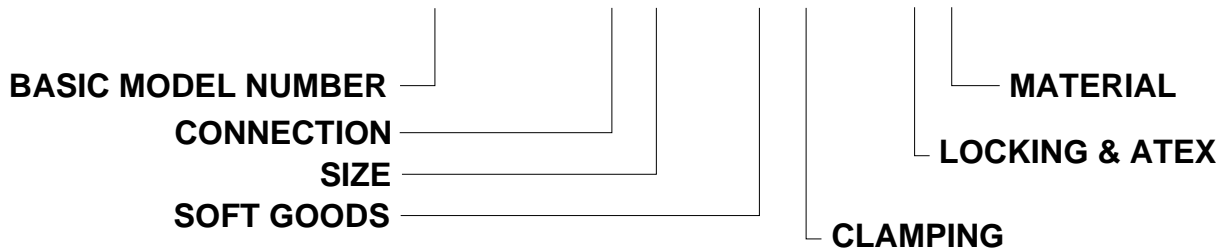


TABLE I - (A) CONNECTIONS

| OPTION (A) | DESCRIPTION |
|------------|------------------------|
| 0 | FF BOLTED 150# ANSI |
| 1 | FF UNDRILLED 150# ANSI |
| 2 | RF BOLTED 150# ANSI * |
| 3 | FF BOLTED DIN PN 16 |
| 4 | RF BOLTED DIN PN 16 * |
| 5 | FF BOLTED JIS 10K |
| 6 | RF BOLTED JIS 10K * |
| 7 | STEEL/NPT |
| 8 | ALUMINUM/ NPT |
| 9 | STAINLE STEEL/NPT |

*RF Not Available in ALUMINUM

TABLE II - (B) - SIZE

| OPTION (B) | SIZE |
|------------|------|
| 1 | 4" |
| 2 | 6" |
| 3 | 8" |
| 4 | 10" |
| 5 | 12" |

TABLE III - (E) - LOCKING & ATEX

| OPTION (E) | LOCK OPTION |
|------------|-----------------------------------|
| 4 | ATEX CERTIFIED - NO LOCK |
| 5 | ATEX CERTIFIED - LOCK QUICK CLAMP |

TABLE III - (F) - BODY MATERIAL

| OPTION (F) | BODY MATERIAL |
|------------|-------------------------------------|
| 0 | STEEL (ASTM A216 Gr. WCB) |
| 1 | ALUM. (ALLOY 356-T51) |
| 2 | STAINLESS STEEL (ASTM 351 Gr. CF8M) |
| 3 | BRONZE (NAVY M BRONZE) |

TABLE II - (C) - SOFTGOODS & TEMP.RANGE

| OPTION(C) | DESCRIPTION | MIN.TEMP. | MAX.TEMP |
|-----------|----------------------------|---------------|--------------|
| 0 | FEP/N8090 BACK-UP DISC | -40°C(-40°F) | 176°C(350°F) |
| 1 | FEP/FLOURGOLD BACK-UP DISK | -73°C(-100°F) | 176°C(350°F) |
| 2 | VITON | -15°C(-29°F) | 204°C(400°F) |
| 3 | BUNA | -40°C(-40°F) | 93°C(200°F) |
| 4 | EPDM | -54°C(-65°F) | 150°C(302°F) |
| 5 | TCF/FLOURGOLD BACK-UP | -73°C(-100°F) | 260°C(500°F) |

TABLE II - (D) - CLAMPING TYPE

| OPTION (D) | CLAMPING TYPE |
|------------|----------------------|
| 0 | UNCLAMPED |
| 1 | SCREW DOWN |
| 2 | QUICK CLAMP |
| 3 | UNCLAMPED SIDE MOUNT |



SHAND & JURIS

an **L&J TECHNOLOGIES** Company

5911 Butterfield Road • Hillside, Illinois 60162
 Phone: (708) 236-6000 • Fax: (708) 236-6006
www.ljtechnologies.com

DESCRIPTION

The model 95021 Gauge Hatch is designed to provide easy access to storage tanks for gauging product level or temperature and product sampling. It is available in sizes 4" through 12". Cover clamp options include a traditional "screw-down" style or the Shand&Jurs exclusive "Quik-Clamp" cam lock. Both clamps can be padlocked to protect the contents of the tank. The hatch, without a clamp, can be used as a supplemental emergency pressure relief vent. Standard set pressure without loading weights is 3.5 oz./sq.in. Maximum working pressure for the clamped cover is 3.0 psi. This hatch features a foot opening cover, flexible sealing member, a tape gauge marker, and an S-hook for suspending a thermometer or sampler. Materials of construction include; aluminum, steel and 316 S.S.



"Screw-Down" Style

Clamping Cover

RECEIVING

This shipment is the property of the purchaser when it leaves our plant. If a shipment is received incomplete or damaged, notify the transportation company at once; preserve shipping crate, packing slip, and contents as received. L & J Technologies can not be responsible for any transit damage or loss.

INSTALLATION

After making the receiving inspection, repack the model 95021 in the same manner that it was received, and keep it in the carton to protect it until ready to mount it on the tank. Flange gasket and hardware for the bolted type to be supplied by others. Bolt the drilled flange type gauge hatch onto the gasketed tank nozzle. Tighten the bolts so as to compress the flange gasket evenly. Weld the non-drilled flange type to the tank nozzle or opening. Use care to protect the flexible seal.




WARNING

Before attempting to install or operate this equipment, read and understand the safety information contained in addendum 95-021-ATEX. Failure to follow the guidelines could result in loss of life and/or damage to equipment. Damage resulting from misuse will void the warranty.

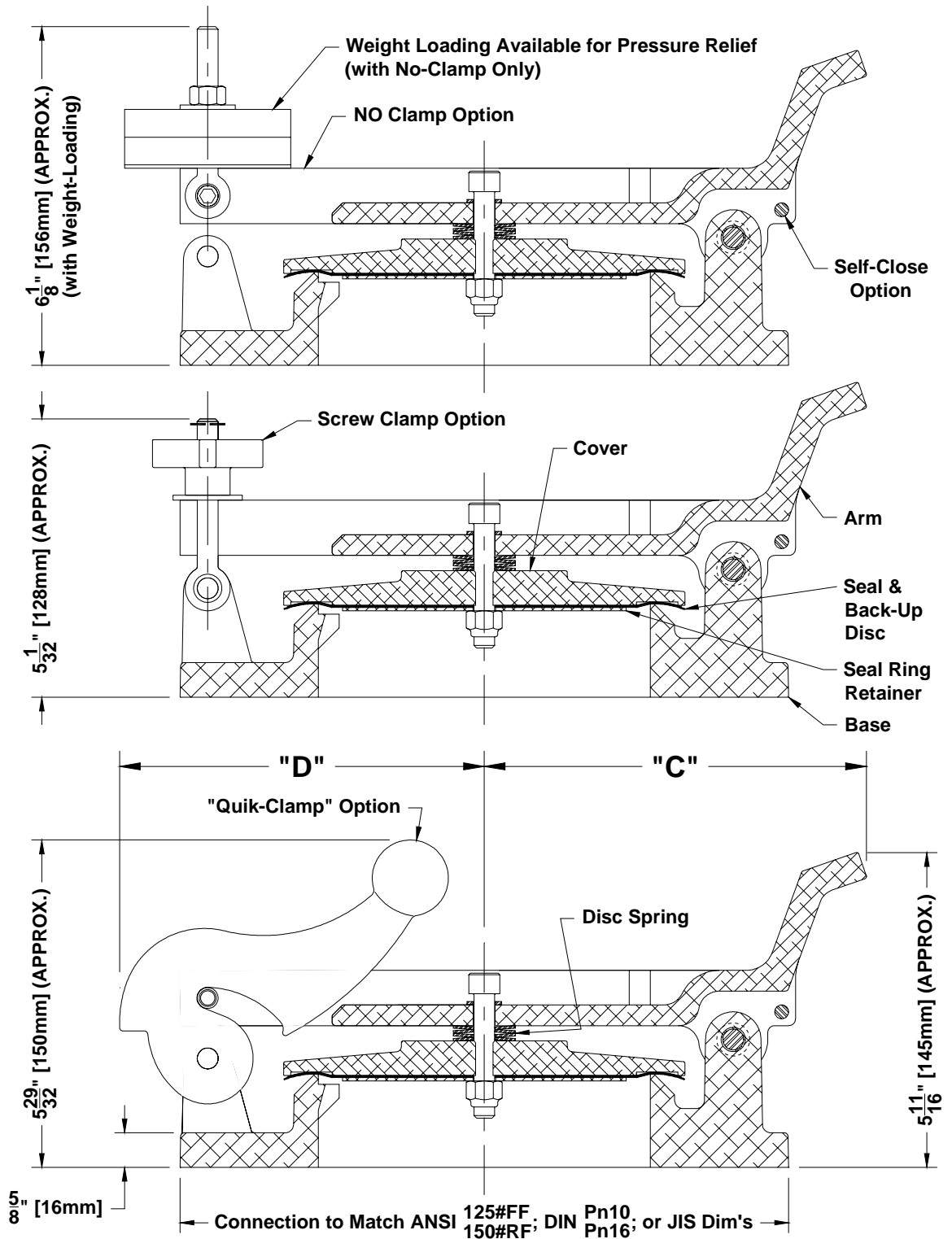
MAINTENANCE

Inspect the hatch at least once a month for the first year after installation. Clean the seal and seat whenever inspection shows the need. These inspections and the frequency of cleaning will provide the basis to establish a predetermine inspection interval for the maintenance program.

| |
|--|
|  WARNING |
| BEFORE PERFORMING ANY MAINTENANCE, THE INSIDE OF THE STORAGE TANK MUST BE AT ATMOSPHERIC PRESSURE. IF THIS IS NOT DONE IT COULD RESULT IN DEATH OR SERIOUS INJURY. |

1. Reduce pressure to atmosphere
2. Carefully loosen the hatch clamp
3. Open the cover (avoiding tank fumes) and inspect the seal and seat. The seal will have a mark on it from the seat.
4. If seal looks damaged, replace it by loosening the center nut and socket head screw. Cover opening in tank to prevent dropping parts into the tank.
5. Remove nut, seal retainer and seal. Don't lose the seal back-up disc.
6. Install new seal, seal retainer and nut.
7. Latch hatch closed, re-pressure tank and test for leaks around the seal. If leaks occur, tighten the clamp more. If this does not help, a new seal will have to be installed and/or the seat sanded to remove burrs or blemishes.

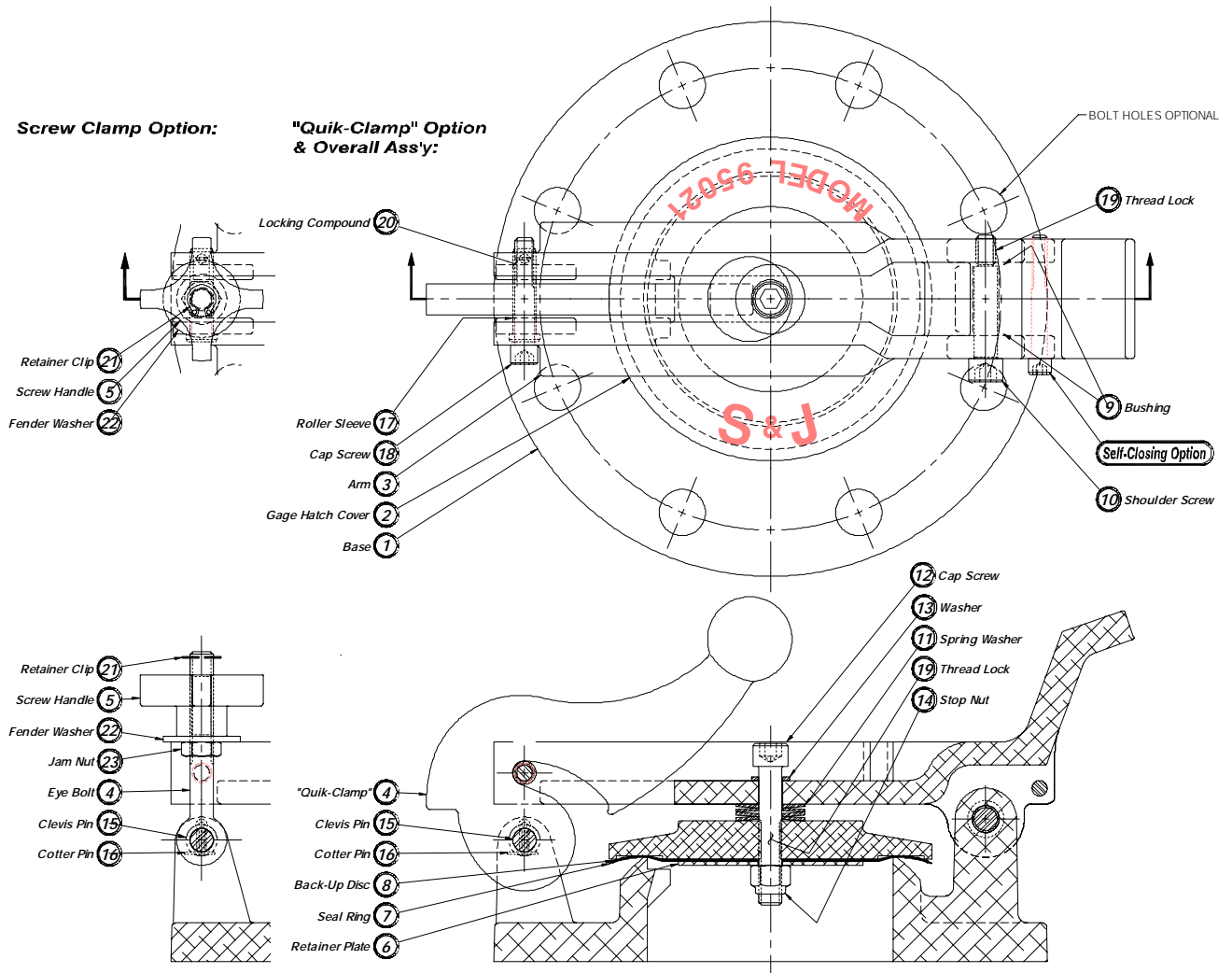
OUTLINE DIMENSIONS AND SPECIFICATIONS



| SIZE | INLET DIAMETER | FLANGE O.D. | "C" | "D" |
|------|----------------|------------------------------|-------------------------------|-------------------------------|
| 10" | 10" (254.0mm) | 16" (406.4mm) | 10 $\frac{3}{32}$ " (256.4mm) | 9 $\frac{3}{32}$ " (231.0mm) |
| 8" | 8" (203.2mm) | 13 $\frac{1}{2}$ " (342.8mm) | 9 $\frac{3}{32}$ " (231.0mm) | 7 $\frac{27}{32}$ " (199.2mm) |
| 6" | 6" (152.4mm) | 11" (279.3mm) | 8 $\frac{3}{32}$ " (205.6mm) | 6 $\frac{19}{32}$ " (167.5mm) |
| 4" | 4" (101.6mm) | 9" (228.5mm) | 7 $\frac{3}{32}$ " (180.2mm) | 5 $\frac{3}{32}$ " (129.4mm) |

Screw Clamp Option:


**"Quik-Clamp" Option
& Overall Ass'y:**





95021 Gauge Hatch Models
CONSULT FACTORY FOR PART NUMBERS AND MATERIALS

*Recommended Spare Parts
 ** Design Subject to Change without Notice

Periodically throughout this manual, the words Danger, Warning, Caution and Note may occur. These are reminders to be especially careful. See the descriptions below for more details on what each word denotes.

| |
|---|
|  DANGER |
| Indicates an imminently hazardous situation which, if not avoided, "will" result in death or serious injury. This word is limited to the most extreme situations. |


| |
|--|
|  WARNING |
| Indicates an potentially hazardous situation which, if not avoided, "could" result in death or serious injury. |

| |
|--|
|  CAUTION |
| Indicates an potentially hazardous situation which, if not avoided, "may" result in minor or moderate injury, or damage to the instrument being worked on. |

! **Note:** Is meant to add some measure of help or give useful information to the person working on the instrument.

Safety Instruction Addendum

Before installation these instructions must be fully read and understood.

| |
|---|
|  SAFETY WARNING |
| <p>It is important to take the following precautions before you start work on the vent</p> <ol style="list-style-type: none"> 1. Personnel installing or performing maintenance to the hatch must be competent and utilize approved equipment and clothing normally used to work with the process media where the hatch is installed. 2. The tank the hatch is installed must be at atmospheric pressure conditions and free of hazardous vapors . 3. Handling of the hatch must be done by personnel trained in all aspects of manual and mechanical handling techniques. |

Forward

The Shand & Jurs Model 95021 Gauge Hatch is in conformance with the requirements EC Directive 98/37/EC Machine Safety and EC Directive 94/9/EC Assessment when installed and maintained in accordance with these instructions and Instruction Manual 95-021-20.

ATEX CERTIFICATION: CE 0359 Ex II 1 G, IIB; CERTIFICATE: ITS 04ATEX12487
Construction in accordance with EN13463-1-2001

Storage/Protection/Selection/Spare Parts

Storage

When Shand & Jurs Hatches are to be stored prior to being installed, storage should be in the original shipping crates with any waterproof lining and/or desiccant remaining in place. Storage should be off the ground in a clean, dry, indoor area.

Protection

Shand & Jurs Hatches are delivered with protection as required by customer specifications or the Quality Assurance Manual.

Spare Parts

Shand & Jurs Hatches are identified by the model and serial numbers stamped on the nameplate. Record the model and serial numbers and refer to them when ordering spare parts from the local Shand & Jurs representative or the factory.

Selection

Verify that the hatch has an ATEX nameplate attached to it. ATEX certified model numbers and options are listed in the table at the end of this addendum. Verify that the materials of construction are compatible with the media in the tank.

Installation

Pressure Setting

The pressure relief setting of these Hatches depends on the weight of the cover. The pressure setting is not factory calibrated.

WARNING

This device should be kept clear of excessive snow and ice build up or other debris which may interfere with it's operation.

Site Preparation

WARNING

The mounting pipe and tank must be free and protected from corrosion. No rust is permitted. Impact between aluminum and rusty steel is a spark hazard. Sparks can cause explosion.

Equipment

This hatch has an exposed metal seat when the cover is lifted. Use proper equipment to prevent damaging the seat. Lift the hatch by the base only.

Grounding

WARNING

To minimize ESD spark risks, this hatch **MUST BE** Earth grounded. If this is not accomplished by installing the vent on its mounting pipe, a cable must be attached to the hatch and Earth grounded. Sparks can cause explosion.

Commissioning/Testing

It is dangerous to people to be in the vicinity of the vent when it may relieve pressure in the tank. Be sure nobody is near the hatch when it is expected to relieve pressure in the Tank.

Operation

Relieving

No one should be near the vent when it can relieve pressure in the tank.

WARNING

A **LOUD** sound may be generated when the tank is relieving. Caution should be exercised by people located within hearing distance of the vent.

Maintenance

Inspection

The hatch must be inspected periodically for corrosion or damage. This should be done frequently initially until a pattern can be established from experience as to how often the hatch should be inspected. Steel and aluminum hatches require special attention to the condition of the diaphragm where it touches the base. Be sure there is no damage. For further Maintenance Recommendations, see Instruction 95-021-20.

Model 95021 GAUGE HATCH

MODEL NUMBER & OPTION DESCRIPTIONS

95021 - AB - CD - EF

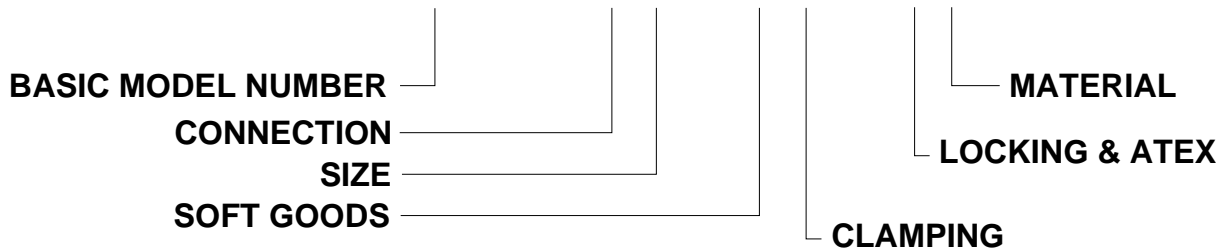


TABLE I - (A) CONNECTIONS

| OPTION (A) | DESCRIPTION |
|------------|------------------------|
| 0 | FF BOLTED 150# ANSI |
| 1 | FF UNDRILLED 150# ANSI |
| 2 | RF BOLTED 150# ANSI * |
| 3 | FF BOLTED DIN PN 16 |
| 4 | RF BOLTED DIN PN 16 * |
| 5 | FF BOLTED JIS 10K |
| 6 | RF BOLTED JIS 10K * |
| 7 | STEEL/NPT |
| 8 | ALUMINUM/ NPT |
| 9 | STAINLE STEEL/NPT |

*RF Not Available in ALUMINUM

TABLE II - (B) - SIZE

| OPTION (B) | SIZE |
|------------|------|
| 1 | 4" |
| 2 | 6" |
| 3 | 8" |
| 4 | 10" |
| 5 | 12" |

TABLE III - (E) - LOCKING & ATEX

| OPTION (E) | LOCK OPTION |
|------------|-----------------------------------|
| 4 | ATEX CERTIFIED - NO LOCK |
| 5 | ATEX CERTIFIED - LOCK QUICK CLAMP |

TABLE III - (F) - BODY MATERIAL

| OPTION (F) | BODY MATERIAL |
|------------|-------------------------------------|
| 0 | STEEL (ASTM A216 Gr. WCB) |
| 1 | ALUM. (ALLOY 356-T51) |
| 2 | STAINLESS STEEL (ASTM 351 Gr. CF8M) |
| 3 | BRONZE (NAVY M BRONZE) |

TABLE II - (C) - SOFTGOODS & TEMP.RANGE

| OPTION(C) | DESCRIPTION | MIN.TEMP. | MAX.TEMP |
|-----------|----------------------------|---------------|--------------|
| 0 | FEP/N8090 BACK-UP DISC | -40°C(-40°F) | 176°C(350°F) |
| 1 | FEP/FLOURGOLD BACK-UP DISK | -73°C(-100°F) | 176°C(350°F) |
| 2 | VITON | -15°C(-29°F) | 204°C(400°F) |
| 3 | BUNA | -40°C(-40°F) | 93°C(200°F) |
| 4 | EPDM | -54°C(-65°F) | 150°C(302°F) |
| 5 | TCF/FLOURGOLD BACK-UP | -73°C(-100°F) | 260°C(500°F) |

TABLE II - (D) - CLAMPING TYPE

| OPTION (D) | CLAMPING TYPE |
|------------|----------------------|
| 0 | UNCLAMPED |
| 1 | SCREW DOWN |
| 2 | QUICK CLAMP |
| 3 | UNCLAMPED SIDE MOUNT |



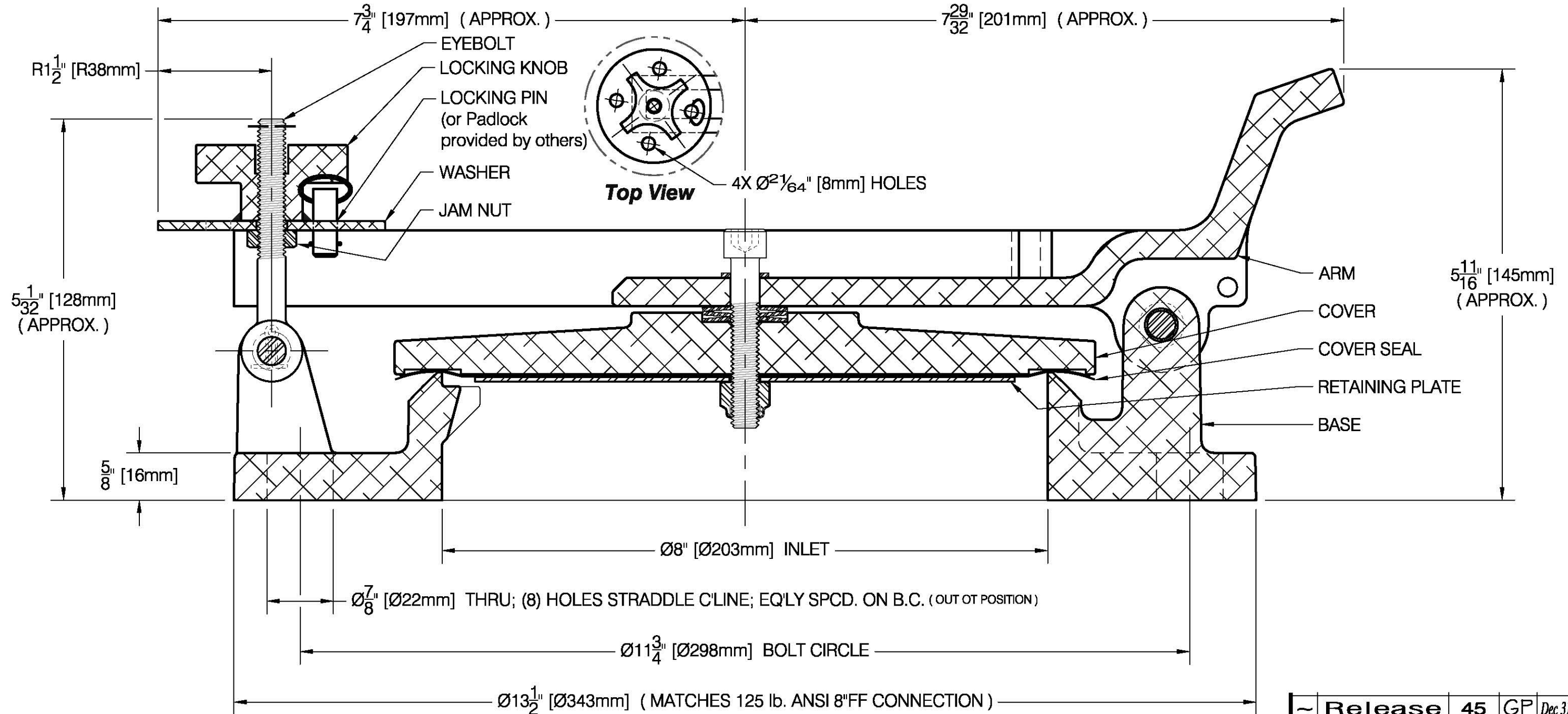
SHAND & JURIS

an **L&J TECHNOLOGIES** Company

5911 Butterfield Road • Hillside, Illinois 60162
 Phone: (708) 236-6000 • Fax: (708) 236-6006
www.ljtechnologies.com

95021-00096-08-TJ2290

THIS DISCLOSURE IS THE PROPERTY OF SHAND & JUR'S, IS SUBJECT TO RETURN UPON DEMAND, AND IS MADE WITH THE UNDERSTANDING THAT IT IS NOT TO BE REPRODUCED, COPIED OR USED, DIRECTLY OR INDIRECTLY, IN ANY WAY DETRIMENTAL TO THE INTERESTS OF SHAND & JUR'S, OR WITHOUT THE EXPRESS APPROVAL OF SHAND & JUR'S.



Section View

Materials of Construction:

- Base, Cover, Arm: Low Copper Alum. Alloy 356
- Retaining Plate: Low Copper Alum. Alloy 6061
- Cover Seal: Buna-N
- Knob, Eyebolt, & Locking Washer: Aluminum
- Hardware: Stainless Steel

Maximum Pressure: 3 PSIG

Quantity: 12

Cust. Tag No('s): N/A

ATEX CERTIFIED

PROJECT: 16-05 WW QC Facility Digester Improvements
CUSTOMER: Western Water Constructors, Inc.
CUSTOMER P.O. NO: 1605-03
DESCRIPTION: Screw-Down Gauge Hatch
MODEL NO: 95021-033151
SPECIFICATION: 11381 Section 2.07
S&J SALES ORDER NO: TJ2290 **DATE:** Feb 01, 2017

APPROVED APPROVED w/CHANGES NOT APPR.-RESUB. PER COMMENT
 CUST. SIGNATURE: _____ DATE: _____

| ~ | Release | 45 | GP | Dec 31 12 | JJ |
|---|---|--------------------|----|-----------|------|
| REV | DESCRIPTION | ECO | BY | DATE | APRV |
| an L&J TECHNOLOGIES Company HILLSIDE, ILLINOIS USA | | | | | |
| 95021 Gauge Hatch 8"FF Locking Screw-Clamp Dim's | | | | | |
| GP | Type: Dim's | Size: B: 17 x 11 | | | |
| Dec 31 12 | Scale: None | Designed: Standard | | | |
| GP | T:\SO#\TXXXXX\TJ2290\9502-00096-08-TJ2290.dwg | | | | |
| JJ | 9502-00096-08-TJ2290 | | | | |