

DigEplan: Setting Scale & Using Measurement Tools

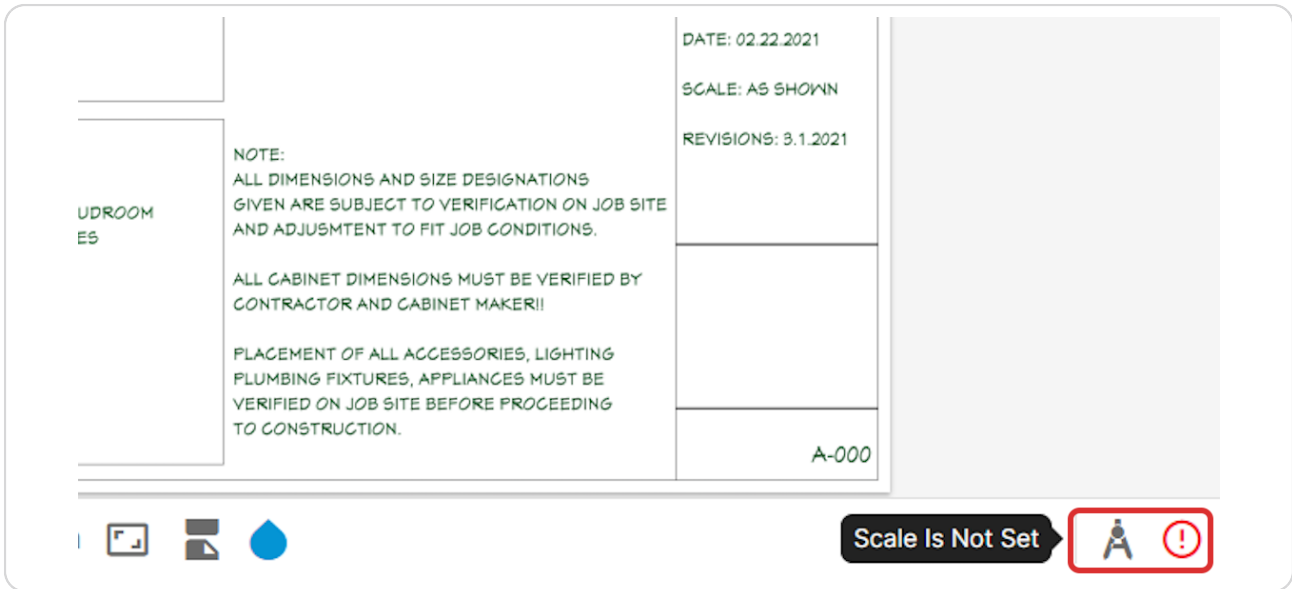
25 Steps



STEP 1

SETTING SCALE

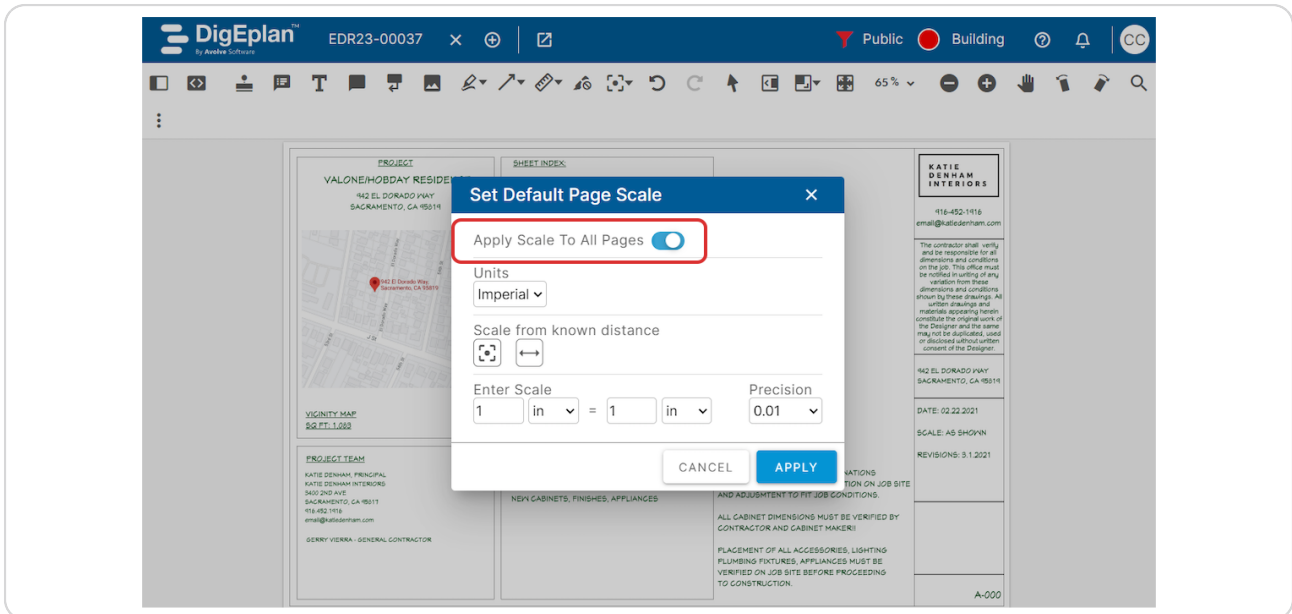
A compass with a red ! will be visible in the bottom right hand corner if the scale has not yet been set. Click on the compass and ! to set the scale



STEP 2

SETTING SCALE

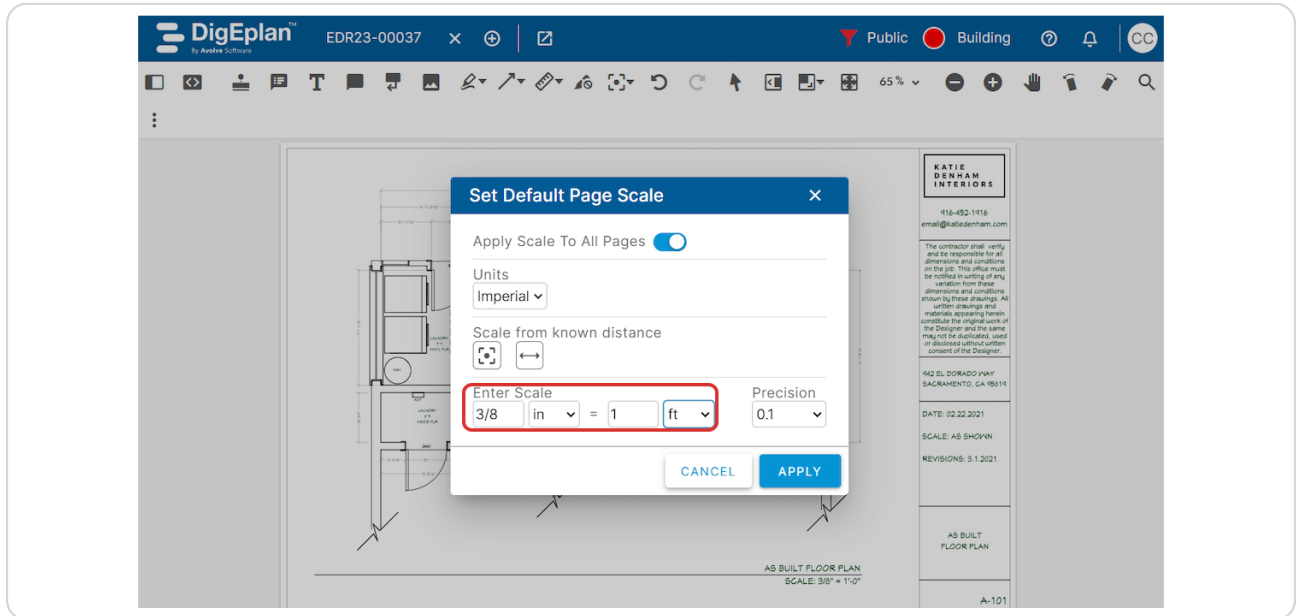
In the pop-up window the reviewer can choose to apply scale to all pages



STEP 3

SETTING SCALE

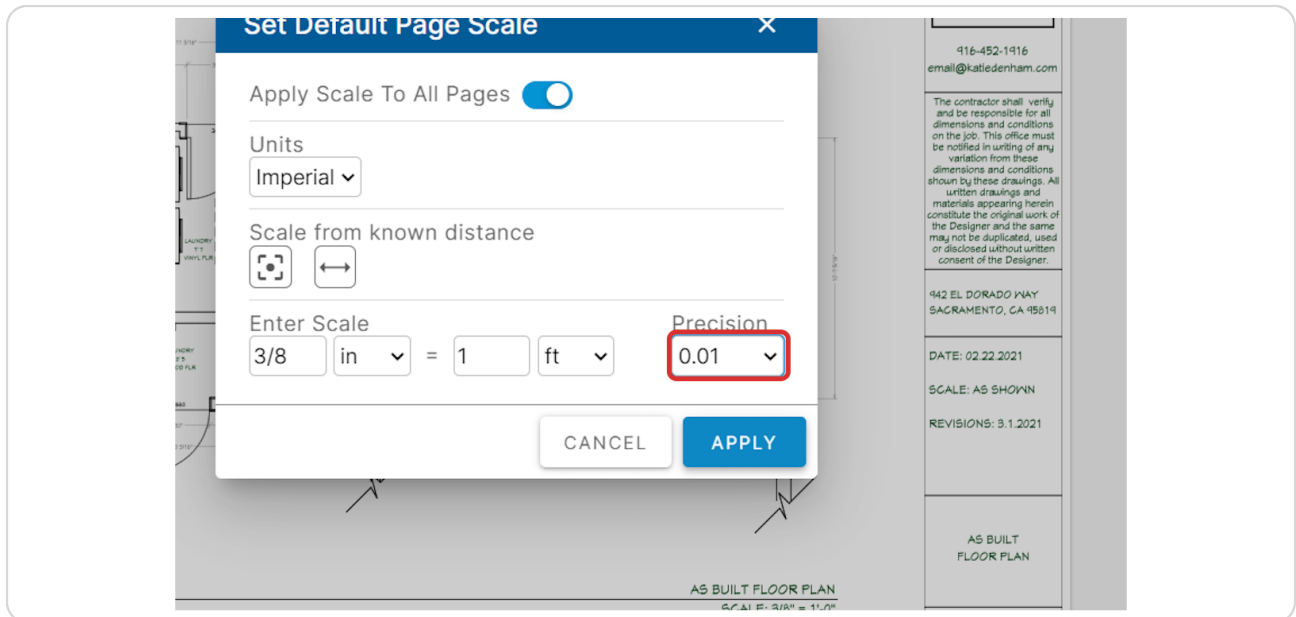
If the scale has been provided the reviewer can enter it in



STEP 4

SETTING SCALE

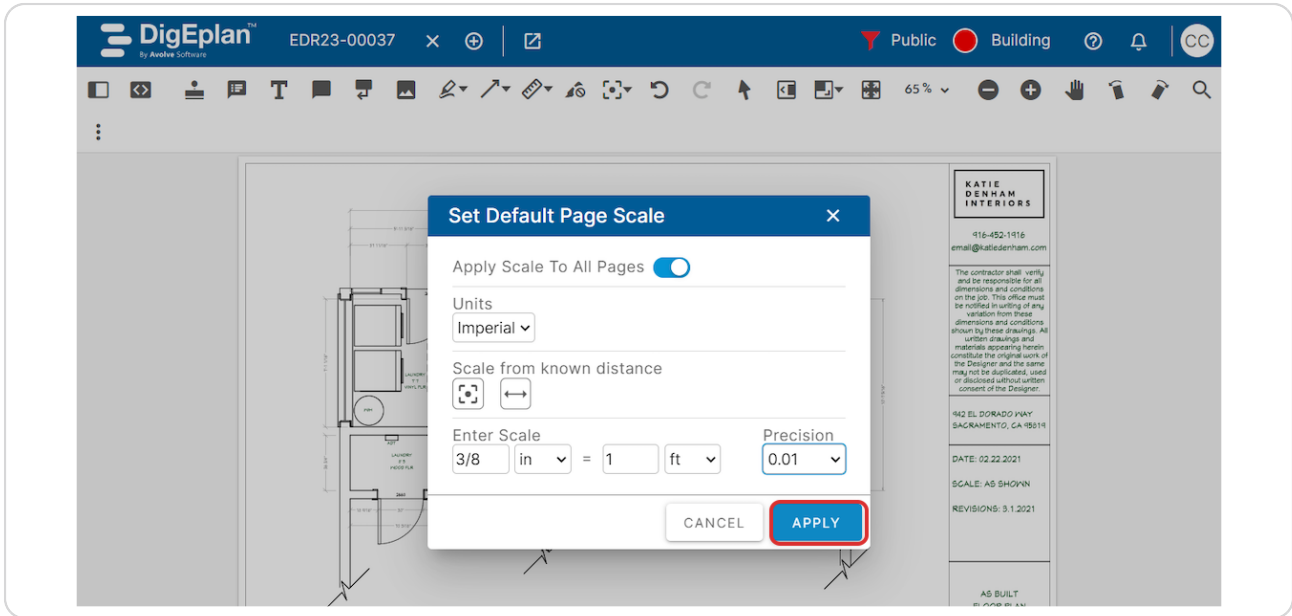
The reviewer can also set the precision to .1, .01, .001, or .0001



STEP 5

SETTING SCALE

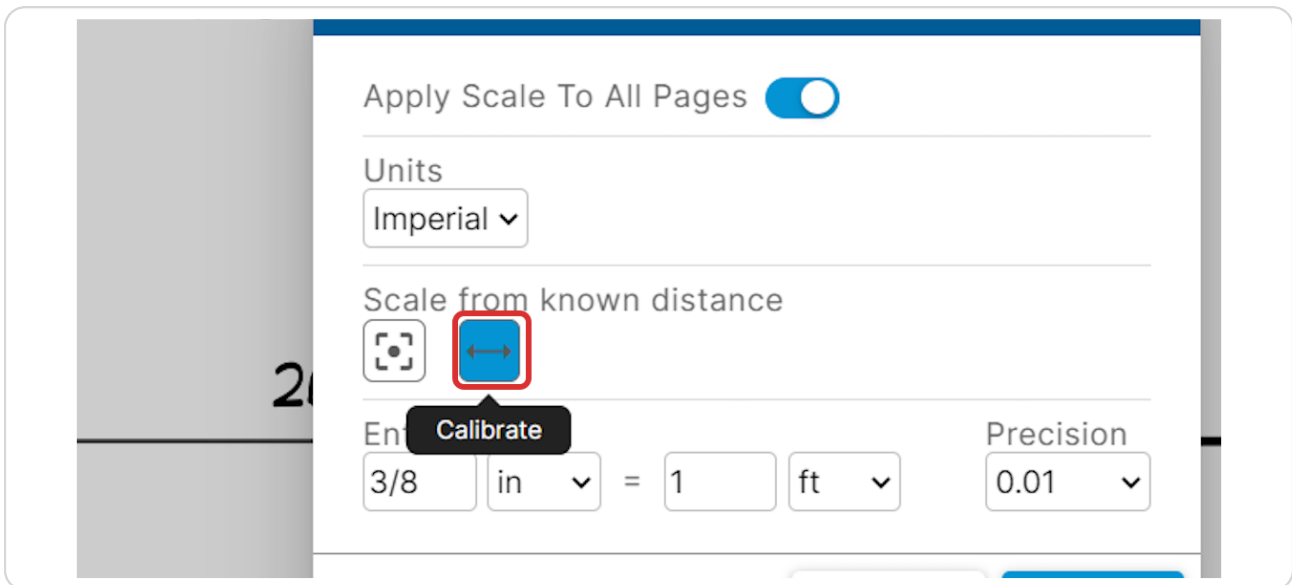
To finish setting the scale click on APPLY



STEP 6

SETTING SCALE: Calibrating

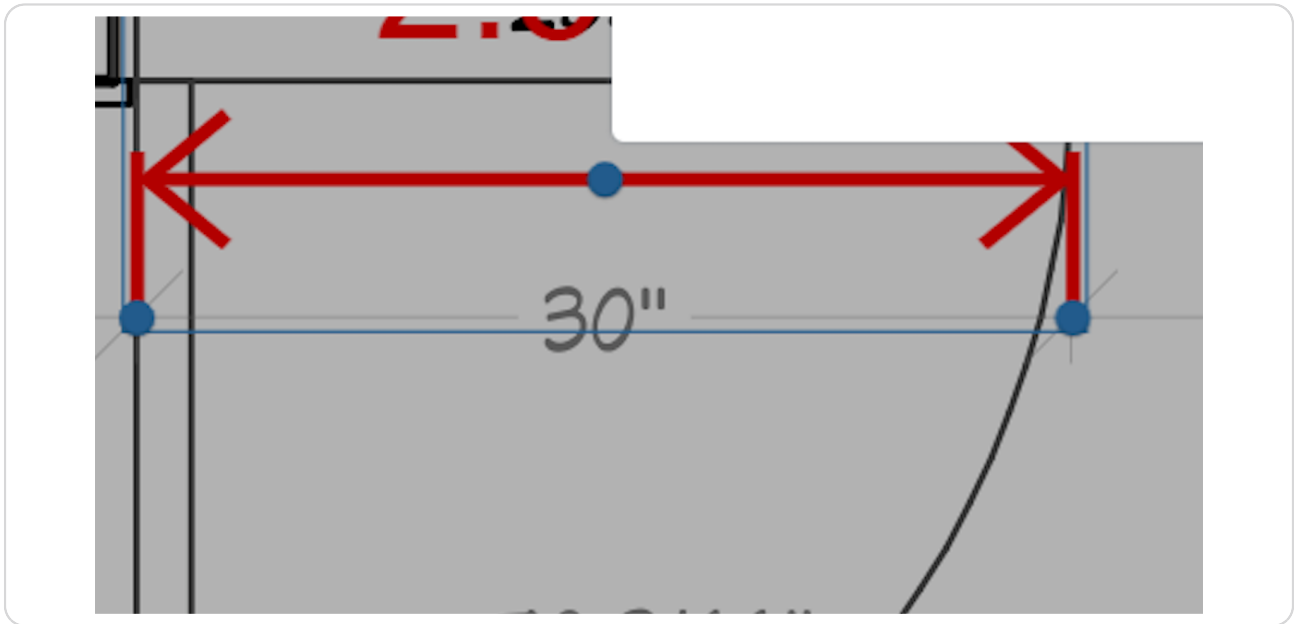
If the scale was not provided but measurements are provided on the plan, the reviewer can calibrate the scale by clicking on Calibrate



STEP 7

SETTING SCALE: Calibrating

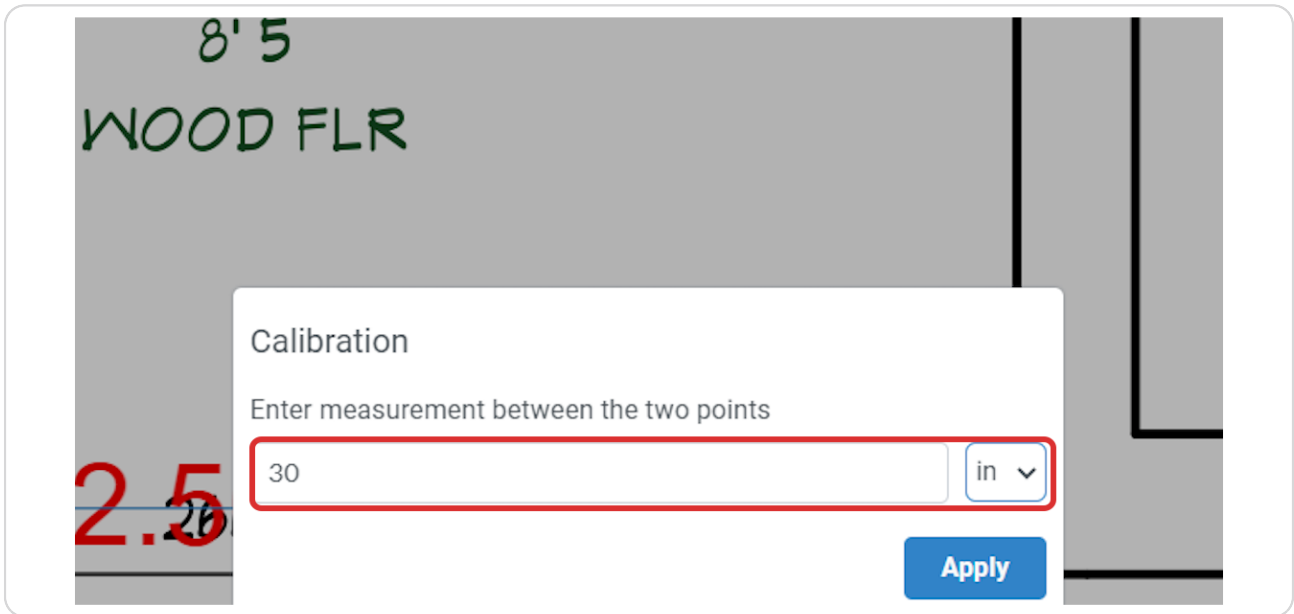
Click on the 2 points to set the calibration



STEP 8

SETTING SCALE: Calibrating

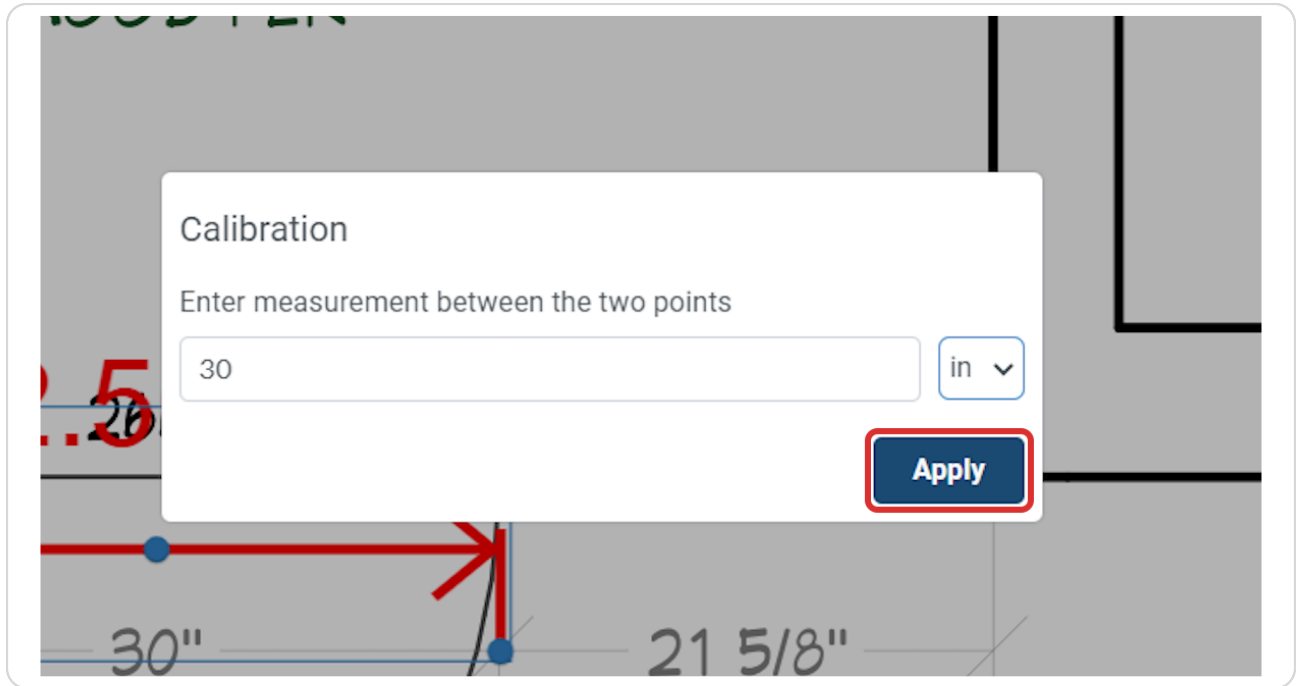
In the Calibration pop-up window enter the measurement for that distance



STEP 9

SETTING SCALE: Calibrating

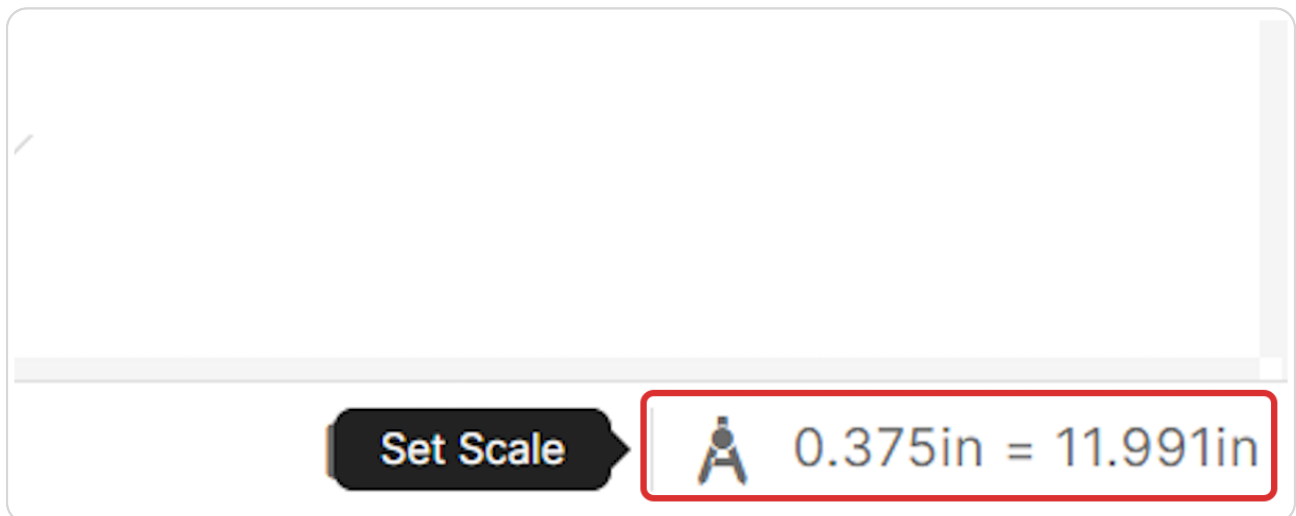
Click on Apply to set the scale



STEP 10

SETTING SCALE: Calibrating

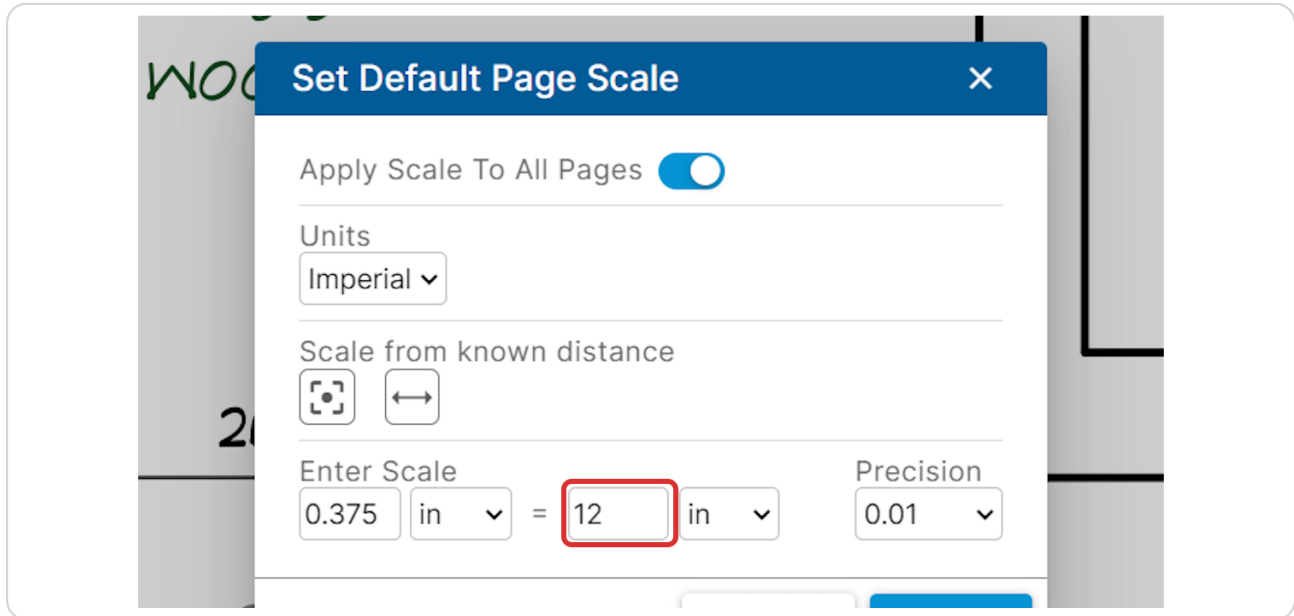
The scale is now displayed in the bottom right



STEP 11

SETTING SCALE: Calibrating

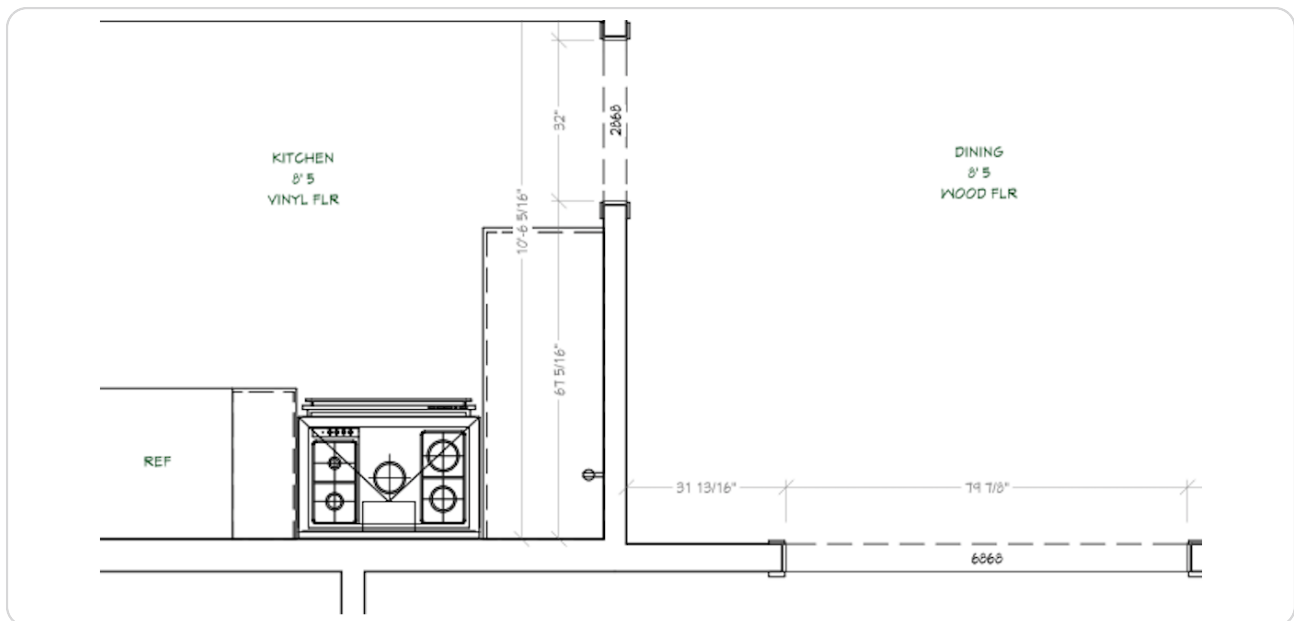
If the calibration is off slightly the reviewer can click on the scale and adjust as necessary



STEP 12

MEASUREMENTS

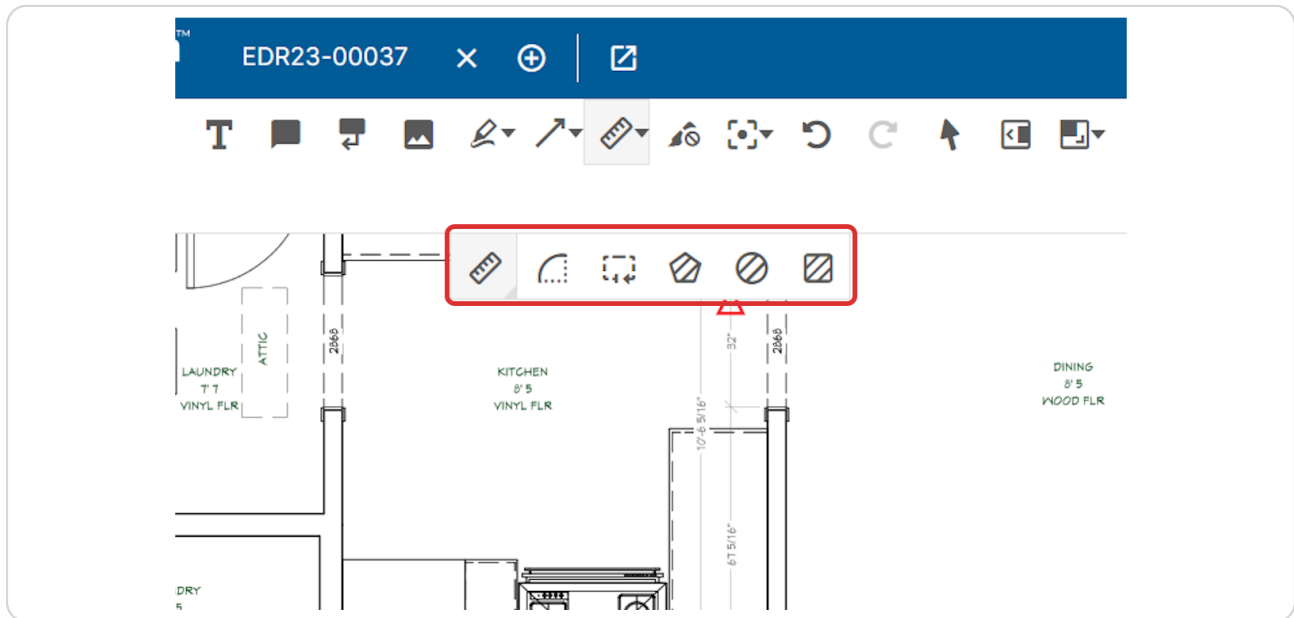
Now that the scale is set the reviewer can use the measurement tools



STEP 13

MEASUREMENTS

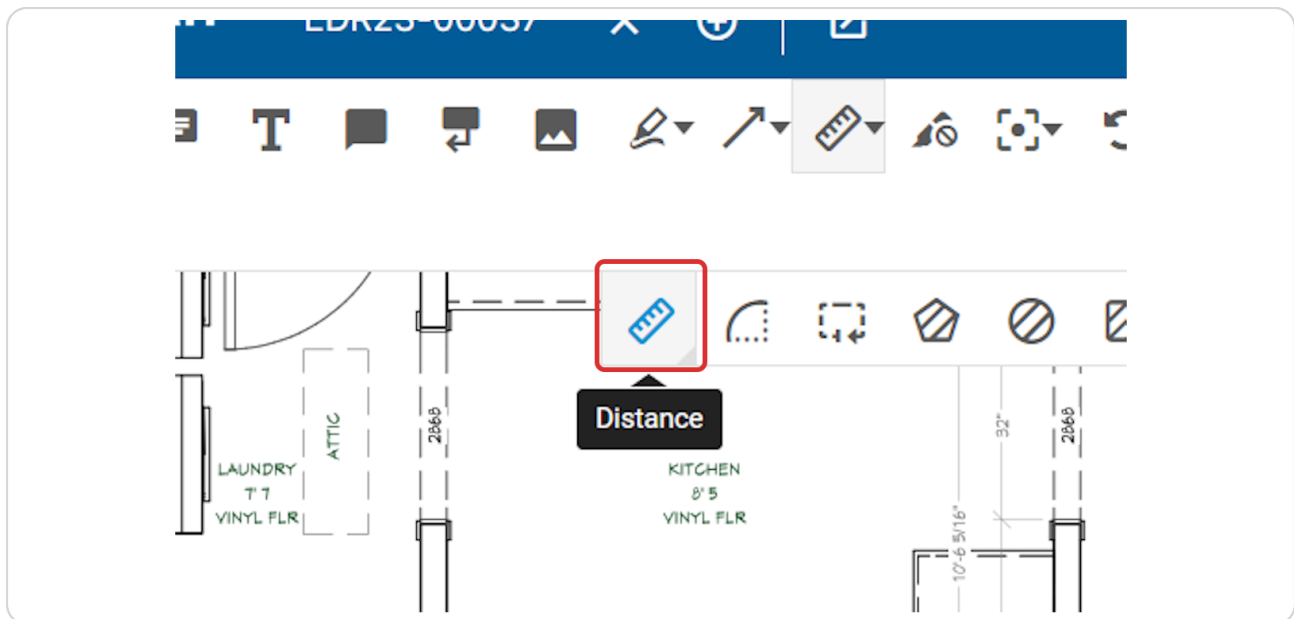
The measurement tools are Distance, Arc, Perimeter, and Area Measurements



STEP 14

MEASUREMENTS: Distance

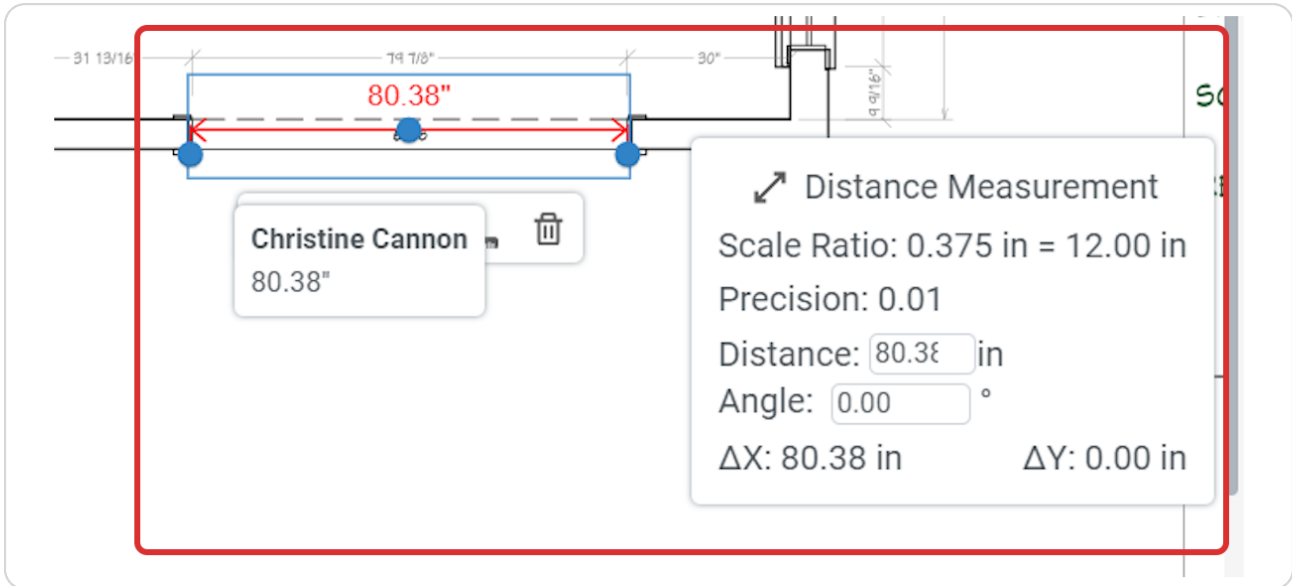
Click on Distance icon



STEP 15

MEASUREMENTS: Distance

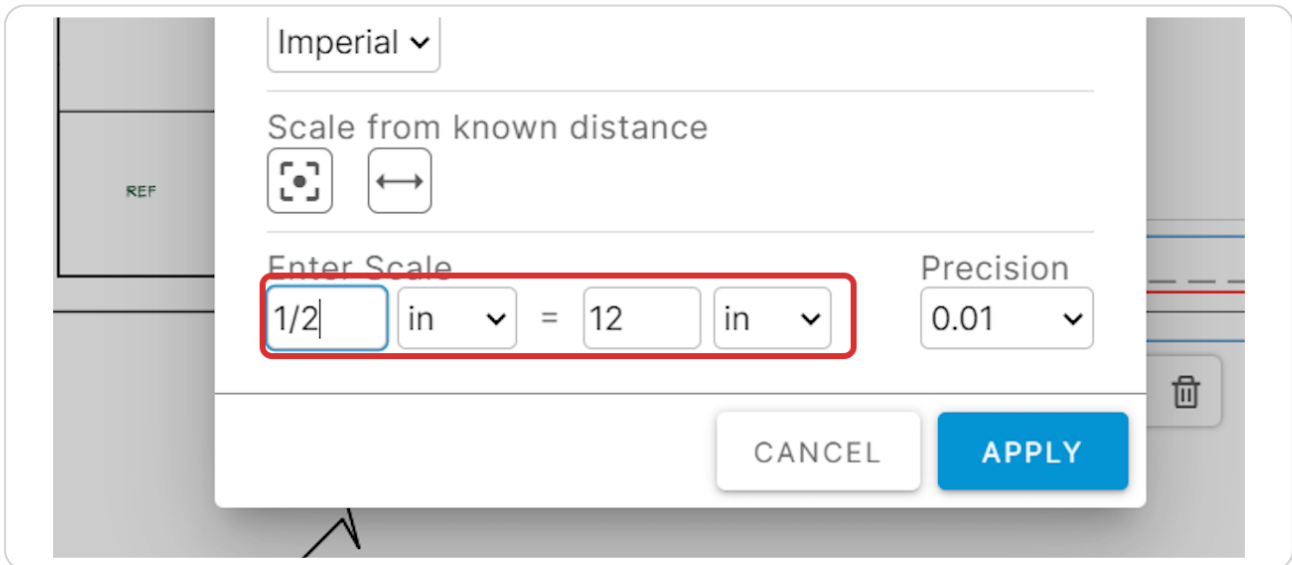
Click on the 2 points to measure distance. Notice the pop-up displaying the scale that was used, precision, distance measured, and angle



STEP 16

MEASUREMENTS: When scale is changed

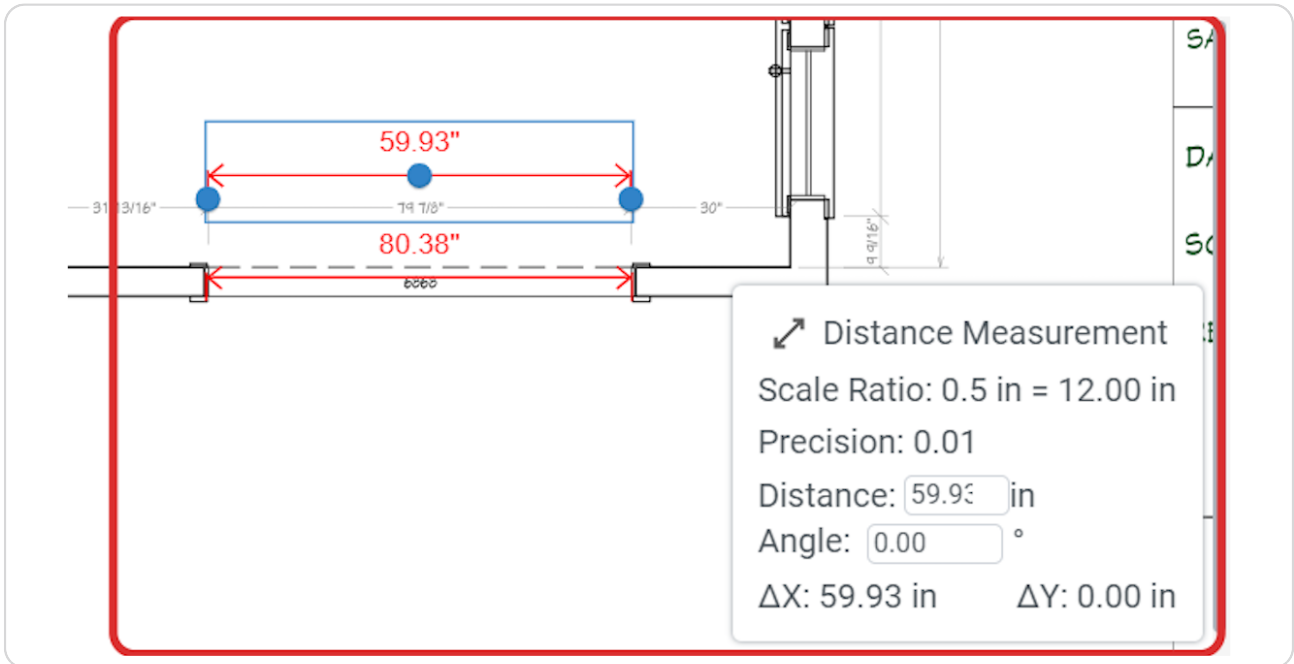
A measurement will retain the scale it was created under. If a detail requires a different scale the scale can be adjusted to measure that on the same sheet



STEP 17

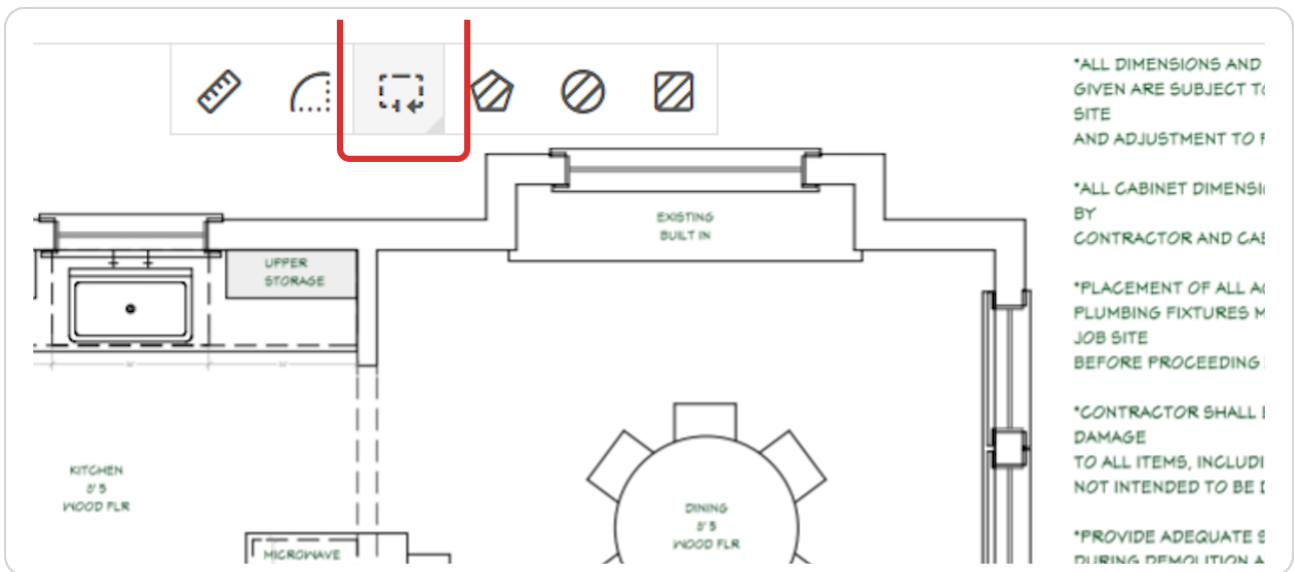
MEASUREMENTS: When scale is changed

See below the 2 measurements created under different scales. The scale information for that markup is available in the markup information box



STEP 18

MEASUREMENTS: Perimeter



STEP 19

MEASUREMENTS: Perimeter

Click on each perimeter point. The tool is set to snap to the nearest line to help with precision. The perimeter information is displayed in the information box

916-452-1416
email@katedenham.com

The contractor shall verify and be responsible for all dimensions and conditions on the job. This office must be notified in writing of any variation from these dimensions and conditions shown by these drawings. All written drawings and materials appearing herein constitute the original work of the Designer and the same may not be duplicated, used or disclosed without written consent of the Designer.

942 EL DORADO WAY
SACRAMENTO, CA 95819

Perimeter Measurement
Scale Ratio: 0.375 in = 1.00 ft
Precision: 0.01
Perimeter: 82.65 ft
Angle: 90.17°

NOTES

- * ALL DIMENSIONS AND SIZE DESIGNATIONS GIVEN ARE SUBJECT TO VERIFICATION ON JOB SITE AND ADJUSTMENT TO FIT JOB CONDITIONS.
- * ALL CABINET DIMENSIONS MUST BE VERIFIED BY CONTRACTOR AND CABINET MAKER.
- * PLACEMENT OF ALL ACCESSORIES, LIGHTING, PLUMBING FIXTURES MUST BE VERIFIED ON JOB SITE BEFORE PROCEEDING WITH CONSTRUCTION.
- * CONTRACTOR SHALL BE RESPONSIBLE FOR DAMAGE TO ALL ITEMS, INCLUDING LANDSCAPE, NOT INTENDED TO BE DEMOLISHED.
- * PROVIDE ADEQUATE SUPPORT AND BRACING DURING DEMOLITION AND CONSTRUCTION.

CONSTRUCTION PLAN LEGEND

- EXISTING WALL
- WALL REMOVED
- NEW WALL

STEP 20

MEASUREMENTS: Area

If the area being measured is not a rectangle or ellipse use the polygon measurement tool

KEEP HEADER
KEEPER OPENING

REMOVE WALL

KITCHEN
8' 5"
HOOD FLR

DINING
8' 5"
HOOD FLR

12'-1 1/8"

2'-2"

1'-3 1/8"

NOTES

- * CONTRACTOR RESPONSIBLE FOR VERIFYING ALL DIMENSIONS
- * ALL DIMENSIONS AND SIZE DESIGNATIONS GIVEN ARE SUBJECT TO VERIFICATION ON JOB SITE AND ADJUSTMENT TO FIT JOB CONDITIONS

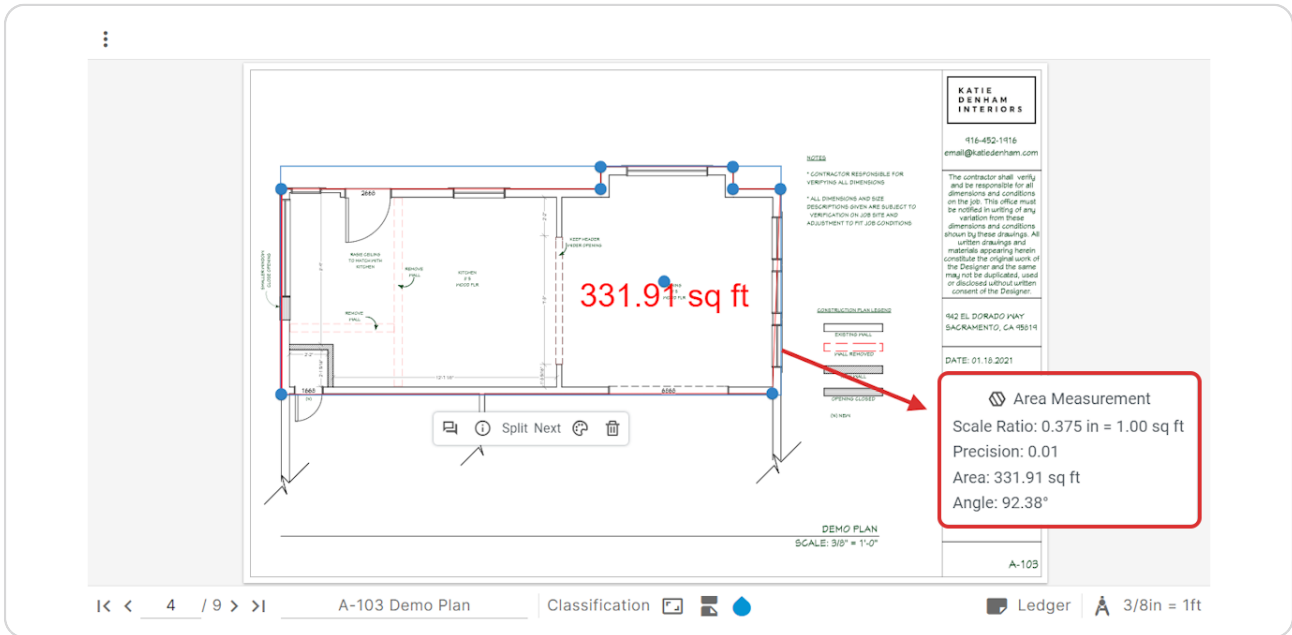
CONSTRUCTION PLAN LEGEND

- EXISTING WALL
- WALL REMOVED
- NEW WALL

STEP 21

MEASUREMENTS: Area

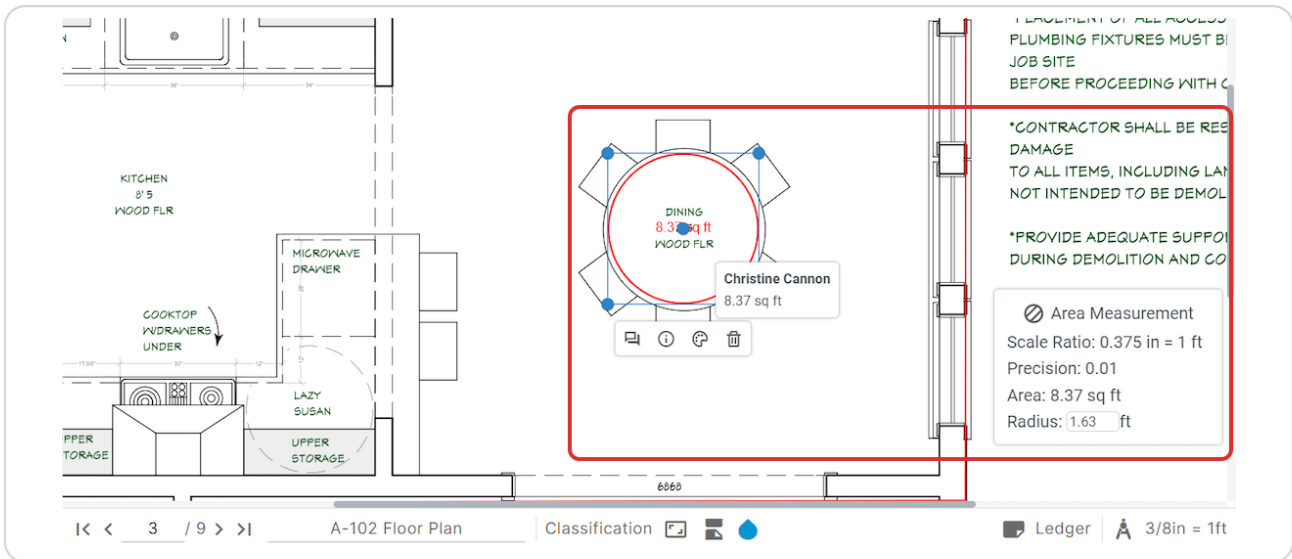
The polygon area is measured the same way as the perimeter by clicking each segment.



STEP 22

MEASUREMENTS: Area

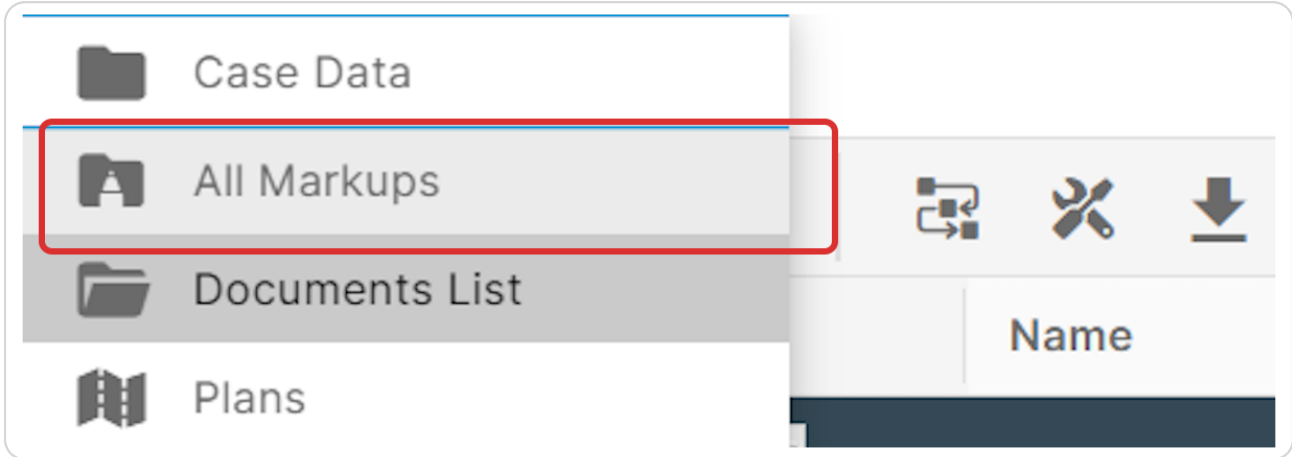
To create a perfect circle area measurement hold down the Shift key while dragging the circle point



STEP 23

CLOSING MEASUREMENT MARKUPS

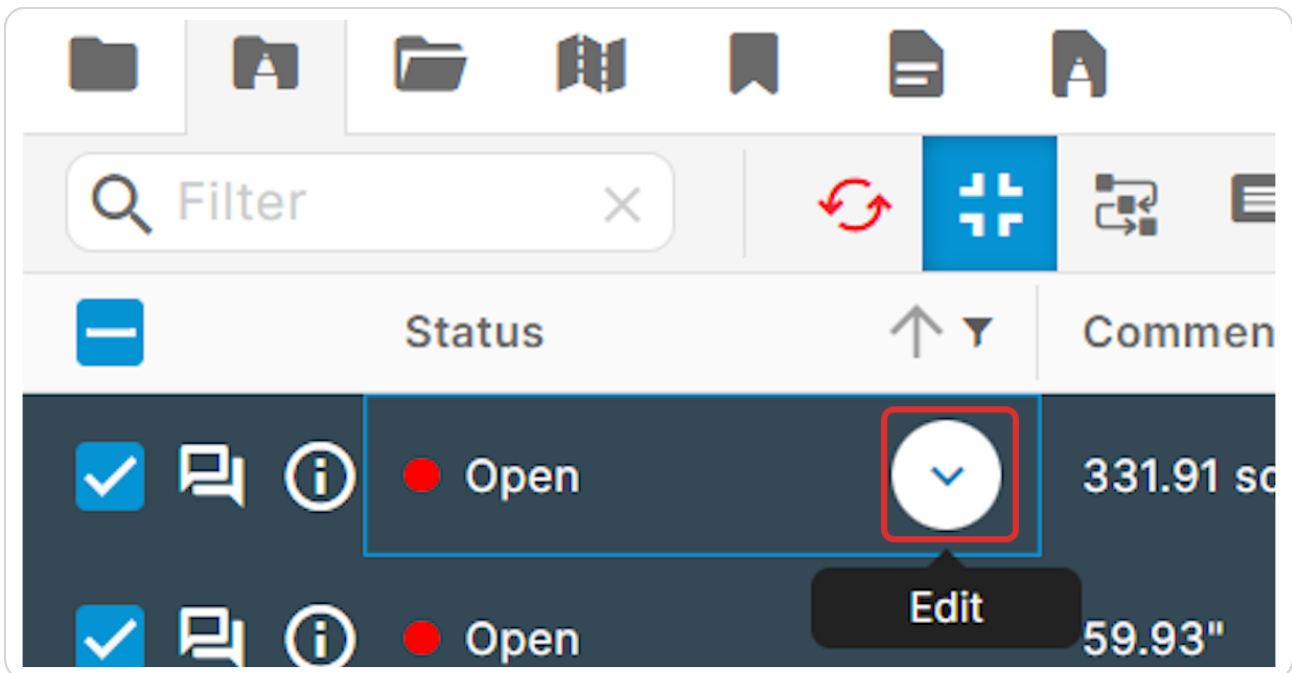
Measurements are markups that default to no corrections required. If the reviewer does not want these measurements to be part of the approved plans the markups will need to be closed. Go to the All Markups Tab



STEP 24

CLOSING MEASUREMENT MARKUPS

Click on Edit next to Open Status



STEP 25

CLOSING MEASUREMENT MARKUPS

Click on Closed

